

How SteelTrace helps QA and Test Managers get ahead!

As QA manager, you are often the last to get your hands on the final project to test it. Despite everyone's commitment to quality, it is inevitably your schedule that gets pushed to the wire. Not alone that but many projects are often ill defined and poorly documented so that, while you can test against the project build plan, you are often unaware of the underlying business requirements that drove the project in the first place.

QA is often the lone voice of caution in a rapidly moving, disruptive environment. Here are some of the issues that you regularly face:

- Lack of visibility in the project planning phase
- Difficulty in fulfilling a test plan when the details and documentation relating to the project are not clearly specified
- Poor referencing of non-functional requirements, traces and dependent links, complicating test planning
- Need to integrate software elements developed off-shore (and possible process variations) into overall testing schedule
- Proliferation of poor quality components throughout your organization.

SteelTrace 4.0 can help you manage these issues, bringing a new level of testing integrity to your quality process. With SteelTrace, you can accelerate your test planning process, ensure that the project is tested against ALL business and non-functional requirements, and that the maximum savings can be made through sensible advance planning and re-working.

SteelTrace gives you:

CLARITY ON THE ORIGINAL BUSINESS REQUIREMENTS AND NEED



The easy and complete requirements capture and definition that SteelTrace brings is a critical success factor for project fulfillment. Requirements are captured and documented at all levels: business, operational, visual etc. and also covers branches, interdependencies, alternate flows etc.

By delivering a clear and understandable picture of the project in all its facets, the Quality Assurance process is made a lot easier. QA no longer has to wade through bulky word documents, with dubious versioning, to work out the testing plan. SteelTrace offers a clear and comprehensive view of the project, documented graphically and textually, making the test process more accurate and efficient.

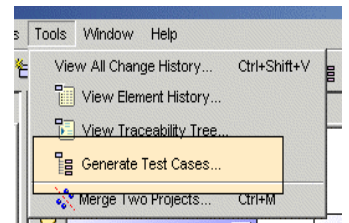
AUTOMATIC GENERATION OF TEST CASES FOR ALL REQUIREMENTS



With responsibility for QA and test, you need to be sure that all changes are taken into account and that any gaps, interdependencies and alternate flows feed into the test process. You want to test that the product works, but you also want to check that it answers the original business need.

SteelTrace's automatic test case generation capability ensures that ALL requirements, links and dependencies – whether business, operational, visual etc. – are mapped to the test plan, ensuring complete coverage of the project's ability to deliver.

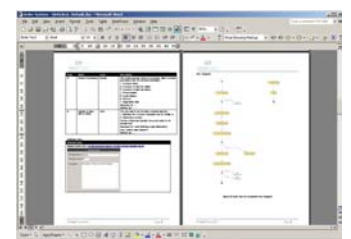
SteelTrace ensures that the testing process is based on the actual requirements as captured and defined and that the final project will deliver specifically on these requirements. This deeper relationship between the project and the requirements cuts re-work dramatically, often by as much as 70% and also reduces project risk.



FULL TEST DOCUMENTATION AND REPORTING



Producing test documentation is not testing, and SteelTrace saves you from this distraction by automatically producing complete documentation to support the test planning process. Automatic test documentation generation also gets around the problem of "hard-to-document" tests (e.g. complex scenario testing). This allows the test team to collaborate



and edit, fine-tuning the process along the way, all the while keeping an eye on the main prize of having full and comprehensive testing of the solution against the original business requirements as defined.

ABILITY TO ADD CUSTOM FIELDS TO ANY PROJECT ELEMENT TO ENRICH TEST DATA AND MANAGEMENT



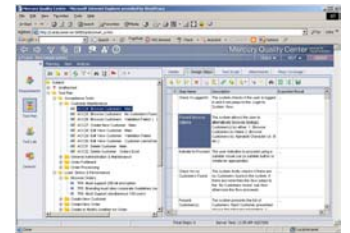
SteelTrace's structured approach to requirements capture and definition now means that you can create Custom Properties, dramatically increasing the flexibility of your test data to hold data specific to the needs of different roles. This means that information specific to domain, role, activity, etc can be used to enrich the test data (e.g. scalability, distribution, infrastructure, distribution, etc.). The test data can also be sorted and searched on the basis of any of this custom data or any class or category of requirements (i.e. high-risk, completed, etc.).

INTEGRATION WITH ALL MAJOR TEST TOOLS AND ENVIRONMENTS



SteelTrace integrates smoothly with all leading testing tools (e.g. Mercury Test Director and Compuware QA Center, in some case bi-directionally, allowing a seamless transition of the automatically generated test cases into the actual test environment when appropriate.

This reduces the risk of error in transcribing testing plans etc from one system to another. By having a seamless map from requirement capture and definition through to the test and development environments, risk is radically reduced and quality improved.



LINKAGE OF TEST PLAN TO MAIN PROJECT VIA SUSPECT LINKS



Your test plan will inevitably contain its own custom properties (e.g. expected result, test run number, etc.) and requirements. Changes and additions that you make to your test plan are immediately flagged in the main project through automatically generated suspect links. Importantly, the reverse is true too, with any changes made to the main project showing as suspect links in the appropriate test cases.

The suspect relationship can be examined to assess the importance of the changes, empowering you to make the appropriate changes in the relevant test element.

In addition, major additions to the project (such as a new requirement, for example) can be notified to the Test Team by way of SteelTrace's notification functionality.

SteelTrace Features:

- Ease of deployment – fast and accurate
- No technology know-how needed to get the most out of SteelTrace
- Extremely low cost of ownership, bringing you unbeatable value and security
- Automated, intuitive flowchart generation builds out full testing plans
- Unprecedented levels of project granularity and interactivity
- Supports multiple simultaneous users (on-line and remote) with real-time updating of master-project
- Integrated with all major project and test management tools
- Process agnostic

SteelTrace gives QA and Test personnel a real chance at improving quality and assuring that the final product actually matches the original business goals. SteelTrace 4.0 brings testing integrity to your quality process. Automated test case generation for each requirement verifies original specifications and ensures defects are caught early in the life cycle. The impact is to cut rework costs by up to 70%, minimize project risk and ultimately deliver a higher quality project.

SteelTrace. Successful project definition. Everytime.

Compuware Corporation
One Campus Martius
Detroit
Michigan 48226

Phone:
313.227.7300
800.521.9353

www.Compuware.com