



**AccuRev®**

# **Installation and Release Notes**

**Version 7.2**

*Revised 30-April-2018*

# Copyright and Trademarks

Copyright © Micro Focus 2018. All rights reserved.

This product incorporates technology that may be covered by one or more of the following patents:

U.S. Patent Numbers: 7,437,722; 7,614,038; 8,341,590; 8,473,893; 8,548,967.

**AccuRev**, **AgileCycle**, and **TimeSafe** are registered trademarks of Micro Focus.

**AccuBridge**, **AccuReplica**, **AccuSync**, **AccuWork**, **AccuWorkflow**, **Kando**, and **StreamBrowser** are trademarks of Micro Focus.

All other trade names, trademarks, and service marks used in this document are the property of their respective owners.

# Table of Contents

|   |          |
|---|----------|
| <b>Introduction.....</b>  | <b>1</b> |
| What's New in AccuRev Release 7.2 .....                         | 1        |
| AccuRev Git Client .....  | 1        |
| Calculated Timespan Schema Field Type .....                     | 1        |
| (subtwin) Element Status.....                                   | 2        |
| Update Workspace and (member)(overlap) Files.....               | 2        |
| “Diff Against” Dropdown Menu in Outgoing Mode.....              | 3        |
| Merge GUI: Selecting Multiple Sources .....                     | 4        |
| <b>AccuRev Installation Notes.....</b>                          | <b>5</b> |
| Compatibility with Previous Versions .....                      | 5        |
| System Requirements.....  | 5        |
| Browser Requirements .....                                      | 6        |
| Installation Overview .....                                     | 7        |
| Installation Packages .....                                     | 7        |
| The Mosquitto MQTT Message Broker .....                         | 8        |
| Installation Wizards.....                                       | 8        |
| Post-installation Administrative Scripts .....                  | 8        |
| Preparing for Installation.....                                 | 8        |
| Get an AccuRev License .....                                    | 8        |
| Determine Configurable Elements .....                           | 9        |
| Download the Installation Packages.....                         | 10       |
| What to Do Next.....  | 10       |
| Installing or Upgrading an AccuRev Server .....                 | 11       |
| Before You Begin.....   | 11       |
| Running the AccuRev Installation Wizard.....                    | 12       |
| Server and Database Upgrades.....                               | 18       |
| Upgrading a Server from a 5.7 or 6.x Version .....              | 18       |
| Upgrading a Replica Server.....                                 | 18       |
| Installing or Upgrading an AccuRev Client.....                  | 19       |
| Installation Methods .....                                      | 19       |
| Before You Begin.....   | 19       |
| Using the AccuRev Client-only Installation Package .....        | 20       |
| Using "Silent" Client Installations.....                        | 23       |
| Installing or Upgrading the AccuRev Web UI Server .....         | 25       |
| Before You Begin.....   | 26       |
| How to Run the AccuRev Web UI Server Installation Wizard.....   | 26       |
| Starting, Stopping, and Testing the AccuRev Web UI Server ..... | 29       |
| Testing the AccuRev Web UI.....                                 | 29       |
| Configuring the AccuRev Web UI .....                            | 29       |
| Post-Installation Information .....                             | 30       |
| Configuring Database Tuning Parameters .....                    | 30       |
| Using the ‘maintain dbupgrade’ Command.....                     | 32       |
| Performing a "Trial Run" Upgrade.....                           | 32       |

|  |           |
|--|-----------|
| Understanding maintain dbupgrade Messages .....  | 33        |
| Messages from dbupgrade_i18n_report.html .....   | 36        |
| Performing the Actual Database Upgrade .....   | 37        |
| Starting and Stopping AccuRev Servers .....  | 37        |
| Starting and Stopping the AccuRev Server .....   | 37        |
| Starting and Stopping the AccuRev Database Server .....                                | 38        |
| Starting and Stopping the AccuRev Tomcat Server and Mosquitto MQTT Message Broker .... | 38        |
| Summary of Start and Stop Operations .....   | 39        |
| Platform Support Notes.....  | 39        |
| Platform Support Matrix.....   | 39        |
| Java Compatibility .....   | 40        |
| (UNIX/Linux only) Workaround for Java Runtime Library Problems.....                    | 40        |
| Linux.....   | 40        |
| AIX .....  | 40        |
| Solaris .....  | 41        |
| Windows.....   | 42        |
| Mac OS X.....  | 42        |
| Uninstalling AccuRev .....   | 43        |
| <b>AccuRev 7.2 Release Notes.....</b>  | <b>45</b> |
| Discontinued Platforms.....  | 45        |
| Changes in AccuRev Release 7.2.....  | 45        |
| Corrections and Changes to the Documentation .....                                     | 51        |
| Known Issues .....   | 51        |
| <b>AccuRev 7.1 Release Notes.....</b>  | <b>53</b> |
| Deprecated Platforms .....   | 53        |
| What's New in AccuRev Release 7.1 .....  | 53        |
| Enhanced Filtering in the History Browser .....  | 53        |
| Admin Command Permissions GUI.....   | 55        |
| Push Notifications.....  | 61        |
| Changes in AccuRev Release 7.1.....  | 63        |
| Corrections and Changes to the Documentation .....                                     | 67        |
| Known Issues .....   | 67        |
| <b>AccuRev 7.0.1 Release Notes.....</b>  | <b>69</b> |
| Deprecated Platforms .....   | 69        |
| What's New in AccuRev Release 7.0.1 .....  | 69        |
| Version Browser: Highlighted Version Relationships and                                 |           |
| Show Promotion Path .....  | 69        |
| Sync Stream Wizard in the GUI.....   | 71        |
| Styling Individual Issue Fields in the Schema Editor.....                              | 72        |
| Crucible Connection in the GUI.....  | 73        |
| Archive Enhancements .....   | 74        |
| License Management Enhancements.....   | 75        |
| Changes in AccuRev Release 7.0.1.....  | 76        |
| Corrections and Changes to the Documentation .....                                     | 83        |
| Known Issues .....   | 83        |
| <b>AccuRev 7.0 Release Notes.....</b>  | <b>86</b> |

|  |    |
|--|----|
| What's New in AccuRev Release 7.0 .....            | 86 |
| Disaster Recovery - Replica Rollback.....          | 86 |
| License Manager.....                               | 86 |
| Change Package Usability Enhancements .....        | 86 |
| GUI Improvements .....                             | 87 |
| Database Upgrade.....                              | 88 |
| Changes in AccuRev Release 7.0.....                | 88 |
| Corrections and Changes to the Documentation ..... | 91 |
| Known Issues .....                                 | 92 |
| Known Issues in AccuRev.....                       | 92 |

# Introduction

Micro Focus proudly introduces AccuRev Version 7.2, helping you unleash the power of software development teams to deliver superior results.

## What's New in AccuRev Release 7.2

Highlights of exciting new developments in AccuRev 7.2 are captured here.

### AccuRev Git Client

AccuRev 7.2 introduces a new client -- the AccuRev Git Client -- that works by using native Git commands to interact with the AccuRev server. The client can be invoked via the Git command line or via third-party Git GUI applications. This new client allows Git users to work within an existing AccuRev infrastructure to pull and push changes from an AccuRev stream, just as the AccuRev GUI and command line client work with **update** and **promote** commands.

The AccuRev Git Client is installed by the AccuRev client-only installers for 64-bit Windows, 64-bit Linux, and macOS 10.13+ platforms. The installer does not install the native Git program; that must be done separately.

Note that no installation or configuration changes to the existing AccuRev server are required in order to use the AccuRev Git Client. Furthermore, all triggers, ACL, EACL, locks, and user access functionality work with the new Git client in the same way they work with the AccuRev GUI (acgui), command line, and WebUI.

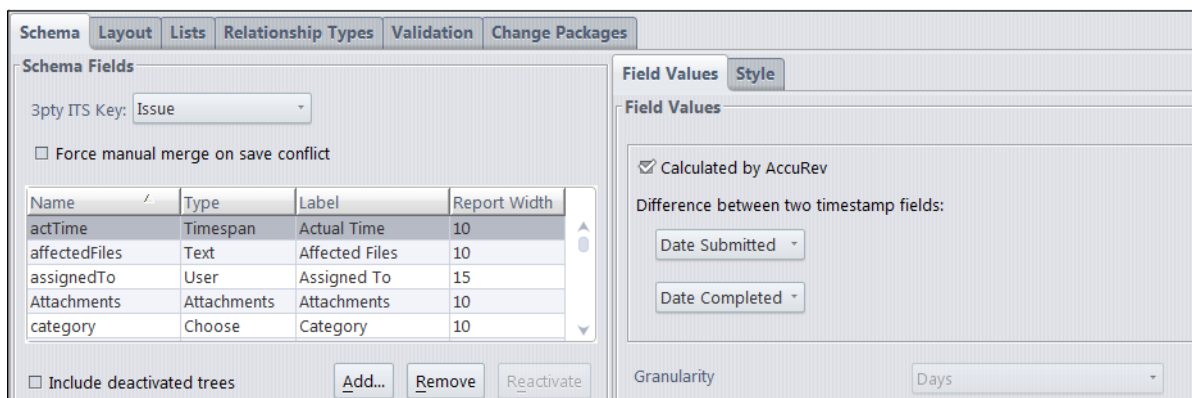
For detailed information, consult the [AccuRev\\_Git\\_Client\\_Release\\_Notes.pdf](#) document in the `<ac-install>/doc/` directory (installed by the AccuRev client-only installer).

### Calculated Timespan Schema Field Type

A new type of schema field called “calculated timespan” dynamically calculates the time difference either between two timestamp fields or between a timestamp field and the current time. Such a field can be viewed and used in issues, active issues tables, issue queries and results, validation conditions and actions, and workflow conditions.

The Timespan field type can be used to define either an “editable timespan” field or a “calculated timespan” field in the schema editor. The editable timespan field type was available prior to 7.2. It allows you to type in any non-negative numeric value and choose a granularity of days or hours for the value. If you enter an integer value (e.g., 45), it is automatically converted to a decimal (45.0).

To create a *calculated timespan* field, check the **Calculated by AccuRev** checkbox and choose the two timestamp fields whose difference will be reflected in the calculated timespan value.



Here are some important notes about calculated timespan fields:

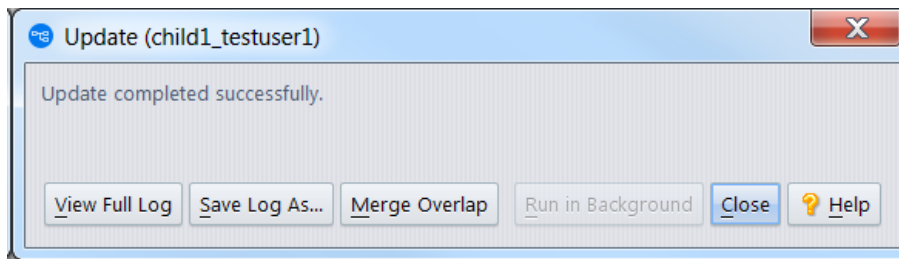
- They are read-only. You cannot type a value into a calculated timespan field.
- The granularity for a calculated timespan field is automatically set to days.
- The value of a calculated timespan field in an issue is updated when an issue is first displayed and whenever the issue is saved.
- If a timestamp field associated with a calculated timespan field does not have a value, the current date and time are used in its place for the calculation. The value of the calculated timespan field is then fluid, i.e., it is recalculated by AccuRev each time the issue is displayed or refreshed.
- If a calculated timespan field is synchronized to a third-party issue tracking system (ITS), its value will be static on that system. This conflicts with the potential fluidity of the calculated timespan field's value. For this reason, **calculated timespan fields should not be used with AccuSync, Micro Focus Connect, and other synchronization products.**
- The expansion of the existing Timespan field type to support calculated timespans imposes the following constraint: **Pre-7.2 AccuRev clients cannot be used to make schema changes; a 7.2 client must be used in order to modify a schema.**

## (subtwin) Element Status

Release 7.2 introduces a new element status called “(subtwin)”. An element has (subtwin) status if one of the directories in its path has (twin) status. Only one of the (twin) directories and its content can be accessed through the pathname; the other(s) can be accessed through their unique element-IDs. To resolve (subtwin) status, the actual (twin) parent directory must be resolved by renaming and/or defuncting all but one of the twin directories.

## Update Workspace and (member)(overlap) Files

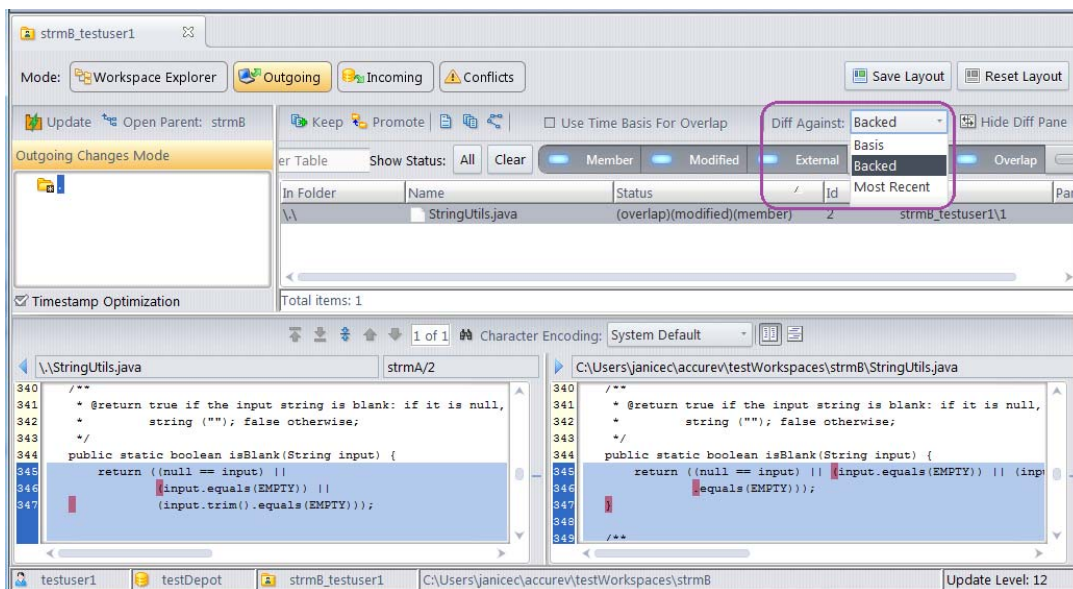
The **Update** operation has been expanded to support merging of files with (member)(overlap) status after the update has completed. A new **Merge Overlap** button has been added to the Update progress dialog:



The **Merge Overlap** button becomes active after the update completes, if there are only *non-twin* overlaps in the workspace. Clicking the button initiates a process of merging the overlapped files against the backing stream (equivalent to manually initiating a bulk-merge of the overlapped files). The user can opt to have trivial merges kept automatically. Non-trivial merges are always displayed in a graphical merge window so that the user can manually resolve conflicts.

## “Diff Against” Dropdown Menu in Outgoing Mode

The File Browser has a new dropdown menu called **Diff Against** in Outgoing mode:



The **Diff Against** menu allows you to choose which version you want to diff your changes against in the Diff pane. The choices are:

- **Basis** - The version that you began your work with, i.e., the result of your most recent **Update** or **Promote** operation, whichever came later.
- **Backed** - The version of the file in the backing stream.
- **Most Recent** - The result of your most recent **Keep** operation. If you haven't done any **Keeps**, this is the basis version. (This option is not offered for a stream or an inaccessible workspace.)



Making a selection in this dropdown menu is equivalent to choosing among **Diff Against => Basis Version, Backed Version, and Most Recent Version** in the file context menu, except that the difference is displayed in the Diff pane of Outgoing mode instead of in a separate tab.

The dropdown menu defaults to the **Basis** value. However, you can change your default value by selecting a different value and then clicking the **Save Layout** button.

## Merge GUI: Selecting Multiple Sources

The Merge tool now supports a more convenient way to include changes from multiple sources in a conflict section. Prior to 7.2, you had to hold down the **Ctrl** key while you clicked on conflict-resolution buttons (i.e., *Theirs*, *Common Ancestor*, or *Mine*) in the desired sequence. In 7.2, you click that same sequence of conflict-resolution buttons *without* holding down the **Ctrl** key. The buttons you clicked are displayed in the “on” state, and they are annotated with numbers to indicate the order that you selected:



You can remove any block that you added to the merged version by clicking the corresponding button again to turn it “off”.

### Notes:

- You cannot remove an inserted block once you’ve performed a manual edit because doing a manual edit resets all the conflict-resolution buttons to the “off” state.
- Any manual changes that you’ve made to a section will be overwritten if you return to that section and click a conflict-resolution button.

# AccuRev Installation Notes

This chapter describes how to install and upgrade AccuRev 7.2 software at your site. In addition to installation procedures, it provides information about installation package options, considerations for upgrading, and post-installation procedures. AccuRev 7.2 is intended for new customers and for all existing customers who wish to upgrade to the latest AccuRev release.

For a high-level summary of new features in Release 7.2, see [What's New in AccuRev Release 7.2](#) on page 1. For a detailed list of changes, see [Changes in AccuRev Release 7.2](#) on page 45.

This chapter is intended for the AccuRev administrator responsible for installing and upgrading AccuRev. Users responsible for installing or upgrading their individual AccuRev client installations will probably be most interested in the material discussed in [Installing or Upgrading an AccuRev Client](#) on page 19.

## Compatibility with Previous Versions

The general rule for compatibility between AccuRev servers and clients is that the AccuRev server must be the same version as, or newer than, the AccuRev client. Use of an AccuRev client that is newer than the AccuRev server is not supported.

The 7.2 AccuRev server is compatible with AccuRev clients from Release 6.2.0 through 7.2.

**IMPORTANT NOTE ABOUT LICENSES:** Because AccuRev 7.0 introduced a new license manager and license file format, it is necessary to obtain a new AccuRev license before upgrading from a pre-7.0 release to AccuRev 7.2. For instructions on that procedure, see [Get an AccuRev License](#) on page 8.

See the *AccuRev Administrator's Guide* for a full description of the license management scheme introduced in AccuRev 7.0.

## System Requirements

AccuRev has the following system requirements

### Client

- Microsoft Windows 7 SP1 (32-bit and 64-bit)
- Microsoft Windows 8.1 (32-bit and 64-bit)
- Microsoft Windows 10 (64-bit)
- Microsoft Windows Server 2008 SP2 (32-bit and 64-bit)
- Microsoft Windows Server 2012 R2 (64-bit)
- Microsoft Windows Server 2016 (64-bit)
- Apple Mac OS X Yosemite 10.10 (64-bit)
- Apple Mac OS X El Capitan 10.11 (64-bit)
- Apple macOS Sierra 10.12 (64-bit)

- Apple macOS High Sierra 10.13 (64-bit)
- Linux Red Hat Enterprise 6 (32-bit and 64-bit)
- Linux Red Hat Enterprise 7 (64-bit)
- Linux SUSE 12+ (64-bit)
- Linux Fedora 26+ (32-bit and 64-bit)
- Linux Ubuntu 14+ (32-bit and 64-bit)
- Linux CentOS 6 (64-bit)
- Linux CentOS 7 (64-bit)
- Unix IBM AIX 6.x (Command Line only)
- Unix IBM AIX 7.x (Command Line only)
- Unix Solaris 10 (Intel 64-bit)
- Unix Solaris 11 (Intel 64-bit)

**Server** (AccuRev has supported only 64-bit servers since Release 6.2.3)

- Microsoft Windows 7 SP1 (64-bit)
- Microsoft Windows 8.1 (64-bit)
- Microsoft Windows 10 (64-bit)
- Microsoft Windows Server 2008 SP2 (64-bit)
- Microsoft Windows Server 2012 R2 (64-bit)
- Microsoft Windows Server 2016 (64-bit)
- Linux Red Hat Enterprise 6 (64-bit)
- Linux Red Hat Enterprise 7 (64-bit)
- Linux SUSE 12+ (64-bit)
- Linux Fedora 26+ (64-bit)
- Linux Ubuntu 14+ (64-bit)
- Linux CentOS 6 (64-bit)
- Linux CentOS 7 (64-bit)
- Unix Solaris 10 (Intel 64-bit)
- Unix Solaris 11 (Intel 64-bit)

## Browser Requirements

AccuRev has the following browser requirements:

- Microsoft Internet Explorer 11 and later
- Microsoft Edge
- Mozilla Firefox 20 and later

- Google Chrome 20 and later
- Apple Safari 6 and later

## Installation Overview

Generally speaking, installing AccuRev involves downloading an installation package from the Micro Focus Web site and running it on the target machines at your site. One machine should be designated as the AccuRev Server machine -- the one that runs the AccuRev Server process, the Web UI Server process, and hosts the AccuRev data repository. Other machines can access the AccuRev Server after you install the AccuRev Client software on them.

You can also have one or more *replica servers* in your environment. AccuRev replica servers enable you to provide access to remote users spread across multiple geographic sites. Replication can also enable you to distribute the load off a single server.

## Installation Packages

AccuRev provides two installation packages: the AccuRev installation package, and the AccuRev Client-only installation package.

- **The AccuRev installation package** lets you install either:
  - The AccuRev Server and Web UI Server - This is the correct choice for a new customer setting up the AccuRev infrastructure for the first time.
  - The AccuRev Web UI Server only - This is appropriate for users who wish to install only the AccuRev Web UI.

Both installation types can be used to install AccuRev components for the first time, or to upgrade existing AccuRev components. They can be run in either graphical (GUI) or text-based (console) interactive modes.

- **The AccuRev Client-only installation package** lets you install or upgrade *just* the AccuRev Client. The client-only installation is useful if you just need to perform a simple client installation to use with an existing, up-to-date AccuRev Server. In addition to graphical (GUI) and text-based (console) interactive install modes, the Client-only installation package also supports a "silent" install mode. The "silent" install requires the presence of a *response file*, which contains a record of responses to prompts from an earlier installation. See [Using "Silent" Client Installations](#) on page 23 for more information.

If you are installing the AccuRev Client for the first time, or if you are upgrading from a previous version of AccuRev, you must download the AccuRev Client-only installation package for your client's platform from the Micro Focus SupportLine download page.

If you are upgrading an *existing* client from AccuRev 5.7 or higher, however, consider using the **Upgrade Client** feature. See [Installing or Upgrading an AccuRev Client](#) on page 19 for more information.

AccuRev and AccuRev Client-only installation packages are available on the Micro Focus SupportLine page (<http://supportline.microfocus.com/>).

## The Mosquitto MQTT Message Broker

AccuRev supports Message Queue Telemetry Transport (MQTT) message broker communications. By using an MQTT message broker, the AccuRev GUI client can automatically receive messages about dynamic changes occurring in Gated Streams from the AccuRev Server.

As of AccuRev 6.2, the Mosquitto MQTT message broker is automatically installed on Windows, Linux, and Solaris platforms so that the AccuRev server can update the AccuRev client with changes from the AccuRev server. MQTT automatically starts after the install. However after a reboot, the administrator should ensure that the process has been restarted or start it manually as required.

In a Windows environment, the Mosquitto message broker runs as a new service. By default, AccuRev attempts to access port number 1883 to use this message broker. If this port number is already in use or if your firewall denies access, the Mosquitto message broker does not work and the AccuRev GUI client has to be refreshed manually.

## Installation Wizards

AccuRev Installation Wizards guide you through the AccuRev installation process. The Installation Wizard can be run in either a graphical (GUI) or text-based (console) mode.

## Post-installation Administrative Scripts

AccuRev installation packages provide the ability to invoke a script or executable. To configure this feature you simply set environment variable `ACCUREV_POST_INSTALL` to the fully-qualified path of the script or executable. The AccuRev installer will execute that script as the last step of the installation process.

## Preparing for Installation

This section describes the steps to take to prepare for installing AccuRev 7.2, as summarized in the following table.

*Table 1. Preparing to Install AccuRev*

| Step | Action                                    | Comments   |
|------|---|--|
| 1    | <b>Update the Operating System</b>        | Install all applicable updates for your operating system. This will ensure successful installation of AccuRev.                                       |
| 2    | <i>Get an AccuRev License</i>             | You do not need a license to install just the AccuRev Client or the AccuRev Web UI Server.   |
| 3    | <i>Determine Configurable Elements</i>    | The installation instructions use generic names. Refer to this section to determine values appropriate for your site prior to installation.          |
| 4    | <i>Download the Installation Packages</i> | If you are installing just the AccuRev Client, check with your AccuRev administrator to see if the Upgrade Client feature is available at your site. |

## Get an AccuRev License

In order to install AccuRev 7.2, you need an **alicense.txt** license file. You do not need a license file to install the AccuRev Web UI Server or AccuRev Client.

The process for getting an **aclicense.txt** license file varies based on several factors, including your current license type and whether or not you are currently under maintenance, as summarized in the following table.

Table 2. Getting an AccuRev License

| Type of Installation | Current License Type | Procedure   | Comments  |
|----------------------|----------------------|---|---|
| New                  | n/a                  | Use the License Request form at <a href="http://supportline.microfocus.com/licensing/AccuRevLicensing.aspx">http://supportline.microfocus.com/licensing/AccuRevLicensing.aspx</a> to get a license for any new AccuRev installation.  | None  |
| Upgrade              | <b>accurev.lic</b>   | <p>If you are currently under maintenance, use the License Request form at <a href="http://supportline.microfocus.com/licensing/AccuRevLicensing.aspx">http://supportline.microfocus.com/licensing/AccuRevLicensing.aspx</a> to get a new AccuRev license.</p> <p>If you are not currently under maintenance, contact a sales representative.</p> | <p>To determine whether or not you are still under maintenance:</p> <ul style="list-style-type: none"> <li>In <b>accurev.lic</b>, check the maintenance expiration date shown in each license section as <b>replace options=&lt;date&gt;</b>.</li> </ul> <p><b>Note:</b> Use the AccuRev CLI command <b>hostinfo</b> to obtain the name of the License Manager host machine (Host name), which is required by the License Request form. (On 6.x systems, be sure to use the "Host name(RLM)" value, which may be different from the "Host name" value.)</p> |

See the *AccuRev Administrator's Guide* for a full description of license management in AccuRev 7.2.

## Determine Configurable Elements

The installation and setup process involves a number of configurable elements. For simplicity and clarity, the instructions consistently use a set of generic names, using *<this font>*. When you see a generic name in a procedure, you must replace that name with the value that is appropriate for your site. For example, you might replace *<ac-install>* with `C:\Program Files\AccuRev`.

*Tip:* Use the **Name at Your Site** column in the following table to record the names you plan to use.

Table 3. Generic and actual names used during installation

| Generic Name                 | Name at Your Site | Description   |
|------------------------------|-------------------|---|
| <i>&lt;installer-loc&gt;</i> |                   | Location of the downloaded AccuRev installation package.  |
| <i>&lt;ac-install&gt;</i>    |                   | Location that AccuRev is installed to. Defaults to: <ul style="list-style-type: none"> <li>(Windows) <b>C:\Program Files\AccuRev</b> (64-bit) or <b>C:\Program Files (x86)\AccuRev</b> (32-bit)</li> <li>(UNIX/Linux) <i>&lt;homeDirectory&gt;/accurev</i></li> </ul> |
| <i>&lt;ac-storage&gt;</i>    |                   | Location of the AccuRev database and container files. Defaults to: <ul style="list-style-type: none"> <li>(Windows) <b>C:\Program Files\AccuRev\storage</b> (64-bit)</li> <li>(UNIX/Linux) <i>&lt;homeDirectory&gt;/accurev/storage</i></li> </ul>                    |
| <i>&lt;ac-host&gt;</i>       |                   | Hostname of the AccuRev Server.   |
| <i>&lt;ac-port&gt;</i>       |                   | Port number that the AccuRev Server runs on. Defaults to <b>5050</b> .  |
| <i>&lt;ac-user&gt;</i>       |                   | Name of the operating-system user that runs the AccuRev Server. Defaults to: <b>acserver</b> .  |

| Generic Name                       | Name at Your Site | Description   |
|------------------------------------|-------------------|---|
| <code>&lt;ac-pass&gt;</code>       |                   | Password for <code>&lt;ac-user&gt;</code> .   |
| <code>&lt;db-port&gt;</code>       |                   | Port number that the database server runs on. Defaults to <b>5075</b> .   |
| <code>&lt;db-admin-name&gt;</code> |                   | Name of the database superuser. Defaults to <b>postgres</b> .<br><b>Note:</b> AccuRev recommends that you retain the default value, <b>postgres</b> . If you create a different value for the database superuser, it must be lowercase. |
| <code>&lt;db-admin-pass&gt;</code> |                   | Password for <code>&lt;db-admin-name&gt;</code> .<br><b>Note:</b> The database password must be lowercase.  |

## Download the Installation Packages

On the Micro Focus supportline page

(<http://supportline.microfocus.com/websync/productupdatesearch.aspx>), download the appropriate AccuRev installation package for your operating system to a local directory (referred to as `<installer-loc>` throughout this document).

Users can install AccuRev by downloading the AccuRev installation package to the client machine and manually running the installation package executable. Users can also start the installation automatically by selecting **Help > Upgrade Client** in the GUI or by using the `accurev upgrade_client` in the CLI, if someone (typically, the system administrator) has already downloaded the installation package to the AccuRev server, copied it to the appropriate location, and renamed it as described in *Enabling the Client Upgrade feature* on page 21.

If you download a compressed package (`.zip` or `.gz` file), first extract the files from the package before continuing. Many extraction tools are freely available and the `unzip` and `gunzip` programs are standard on many UNIX/Linux systems. The Mac OS X operating system does not require any special software for `.zip` files -- just double-click the file to extract the install package.

## What to Do Next

What to do next depends on whether you are installing or upgrading AccuRev, the AccuRev Client, or the AccuRev Web UI Server, as summarized in the following table.

*Table 4. Next Steps in the Installation Process*

| If You Are Installing or Upgrading | Go To   |
|------------------------------------|---|
| The AccuRev Server                 | <i>Installing or Upgrading an AccuRev Server</i> on page 11         |
| Just the AccuRev Client            | <i>Installing or Upgrading an AccuRev Client</i> on page 19         |
| Just the AccuRev Web UI Server     | <i>Installing or Upgrading the AccuRev Web UI Server</i> on page 25 |

# Installing or Upgrading an AccuRev Server

The procedure for installing AccuRev is largely the same whether you are installing AccuRev for the first time or you are upgrading an existing AccuRev installation. Note, however, that there are several important considerations and prerequisites for users *upgrading* to AccuRev 7.2. See [Server and Database Upgrades](#) on page 18 for more information on this topic.

## Before You Begin

Whether you are performing a new AccuRev Server installation or upgrading an existing installation, before installing AccuRev 7.2 you should:

1. Read the [Platform Support Notes](#) on page 39 for your operating system before proceeding, and follow the instructions there.
2. If you are installing a new AccuRev Server on a UNIX/Linux machine, run the **adduser** command to make an OS-level user (`<ac-user>`). You should set `<ac-install />` as the home directory for this user. The AccuRev Server cannot be installed by root on UNIX/Linux platforms.
3. Acquire an **aclicense.txt** license file if you have not already done so. See [Get an AccuRev License](#) on page 8 for more information.

**Note:** You *must* have an **aclicense.txt** file in order to install AccuRev 7.2.

4. If you are *upgrading* an existing AccuRev Server:
  - **IMPORTANT: Perform a full backup of your AccuRev data.** This includes backing up any replica servers. For detailed instructions, see the section titled “Backing Up the Repository” in the *AccuRev Administrator’s Guide* for your existing release. **MAKE SURE TO USE THE CORRECT BACK UP PROCEDURES FOR YOUR EXISTING INSTALLATION.**
  - Read through the upgrade information that applies to your current AccuRev installation in [Server and Database Upgrades](#) on page 18 *before* you start the installation process.
  - Plan a maintenance window for this upgrade and data migration, during which clients will not be able to connect to the server. See the instructions at [Upgrading a Replica Server](#) on page 18 for running a trial upgrade and estimating the time to complete the process.
5. Before starting the installation on UNIX/Linux, ensure that the LC\_ALL environment variable is set to a UTF-8 locale (such as "en\_US.UTF-8", NOT "en\_US.latin".) Windows installations are not affected, however proceeding with a non UTF-8 locale on UNIX/Linux can lead to a failed, partially-complete installation. Use the **locale** command to determine your current locale setting, and **locale -a** to determine what locales are available. See the documentation for your operating system for details about how to install and change locale settings.

## Considerations for AccuRev Replication Servers

Before deciding to install a replica server, see the "Replication of the AccuRev Repository" and "License Management" chapters in the *AccuRev Administrator’s Guide*. Before proceeding with replica server installation, contact AccuRev Support Services for more information.

## Use Native Shells

AccuRev recommends using only shells that are native to/installed with the OS. Avoid using third-party shells as they do not always work as expected.



## Running the AccuRev Installation Wizard

This section describes how to run the AccuRev Installation Wizard. It assumes you have already downloaded the correct installation package for your platform as described in [Download the Installation Packages](#) on page 10.

### Overview

The AccuRev wizard guides you through steps for installing a new AccuRev Server or upgrading an existing server. If the Installation Wizard discovers that an AccuRev server already exists in the location you specify, it will prompt you through the upgrade process.

Upgrading to 7.2 from a pre-7.0 AccuRev release requires a database upgrade, independent of the installation process. The complexity of the database upgrade depends on the release from which you are upgrading. See [Server and Database Upgrades](#) on page 18 for more information.

If the Installation Wizard determines that you have an existing, *nonstandard* 5.x database installation (for example, if you installed your own copy of PostgreSQL, or you have multiple instances running on the same machine), the installer will not continue. Nonstandard database installations are not supported. You need to contact Micro Focus SupportLine (<https://supportline.microfocus.com>) to continue.

At the end of the installation, make sure that you tune your database parameters as described in [Configuring Database Tuning Parameters](#) on page 30. You must reboot the database for the tuning parameters to take effect.

### Before You Begin

Before running the AccuRev Installation Wizard:

1. **Log in** -- Log in to the machine on which you will be installing AccuRev. Log in as `<ac-user>` (UNIX/Linux) or a user with installation privileges (Windows). (See [Before You Begin](#) on page 11 to learn about creating `<ac-user>` on UNIX/Linux machines.)

**Note:** For security reasons, you CANNOT install the AccuRev server on UNIX/Linux if you are logged in as `root`.

2. **Stop the AccuRev Server and AccuRev DB Server** -- If you are upgrading an existing AccuRev Server, you must stop the AccuRev Server and the AccuRev DB Server before you can install the current version. See [Starting and Stopping AccuRev Servers](#) on page 37 if you need help with this step.

*Tip:* Stopping the AccuRev DB Server also stops the AccuRev Server.

3. **Stop the AccuRev Tomcat Server and the Mosquitto MQTT Message Broker** -- If you are upgrading an existing AccuRev Server, you must stop the AccuRev Tomcat Server and the Mosquitto MQTT Message Broker.
4. **IMPORTANT: Verify that the Tomcat process has stopped** -- The Tomcat process sometimes continues even when the Tomcat service has been stopped. Manually terminate the process if necessary.

### How to Run the AccuRev Installation Wizard

This section describes how to install AccuRev using the AccuRev Installation Wizard.

**Note:** The specific prompts that you see and the order in which you see them can vary depending on your particular installation and the options that you select. Not all users will see all the prompts described in the following procedure, which focuses on the graphical version of the Installation Wizard but provides information about console mode in *[brackets]*.

To run the AccuRev Installation Wizard:

1. **Start the Installation Wizard** -- Start the AccuRev Installation Wizard you downloaded from the Micro Focus web site by double-clicking the installer icon, or by entering the installer name on the command line as summarized in the following table. Note that the installation program can be run with a graphical user interface (GUI) or as a console (text-only) application.

Table 5. Starting the AccuRev Installation Wizard

| Platform   | Installation Mode    | Run This Procedure   |
|------------|----------------------|--|
| Windows    | GUI                  | <b>accurev-n.n.n-windows.exe</b><br>where <i>_n_n_n</i> is the AccuRev version number<br><b>accurev-7.2-windows.exe</b> , for example  |
|            | Console (text-based) | <b>accurev-n.n.n-windows.exe -i console</b><br>where <i>_n_n_n</i> is the AccuRev version number<br><b>accurev-7.2-windows.exe -i console</b> , for example  |
| UNIX/Linux | GUI                  | <b>sh accurev-n.n.n-platform.bin</b><br>where:<br><ul style="list-style-type: none"> <li>▪ <i>-n.n.n</i> is the AccuRev version number</li> <li>▪ <i>platform</i> is the UNIX/Linux platform name</li> </ul> <b>sh accurev-7.2-linux-x86.bin</b> , for example                       |
|            | Console (text-based) | <b>sh accurev-n.n.n-platform.bin -i console</b><br>where:<br><ul style="list-style-type: none"> <li>▪ <i>-n.n.n</i> is the AccuRev version number</li> <li>▪ <i>platform</i> is the UNIX/Linux platform name</li> </ul> <b>sh accurev-7.2-linux-x86.bin -i console</b> , for example |

*Tip:* If you are installing AccuRev from the console you can type:

- **"back"** to return to the previous prompt in the installation program
  - **"quit"** to exit the installation program
2. **License Agreement** -- Before you can proceed, you must click "I accept the terms of the License Agreement." and then click **Next** to continue. [*Console: You can type "y" to agree, "n" to refuse, or press Enter to page through the license agreement.*]
  3. **Confirm Administrator Privileges** -- If the installer prompts you for this information:
    - Windows: Specify whether or not the current user has Administrator privileges on the current machine. Note that Windows requires that you have Administrator privileges.
    - UNIX/Linux: Specify whether the current user is **root**. Note that for security reasons, you CANNOT install the AccuRev server on UNIX/Linux if you are logged in as **root**.
  4. **Choose Install Folder** -- Specify a different directory if you do not want to use the `<ac-Instal I >` defaults: `<homeDir ectory>/accurev` on UNIX/Linux, `C:\Program Files\AccuRev` on Windows. See *Determine Configurable Elements* on page 9 if you are not familiar with the values represented by `<ac-Instal I >` and `<homeDir ectory>`.
    - If you are installing software for the first time, and do not wish to use the default location, specify a location where you have write permission.
    - If you are upgrading and the existing installation is not at the default location, specify your existing AccuRev installation directory.

Click **Next** to accept the default and continue. [Console: Press **Enter** to accept the default and continue.]

5. **Choose Installation Type** (for new installs only) -- Select one of the following:
  - **AccuRev Server and Web UI Server** -- Installs the AccuRev Server, the AccuRev Web UI Server, and a local AccuRev Client. Note that the AccuRev Web UI Server includes an Apache Tomcat web server. [Console: Press **Enter** to install the AccuRev Server and Web UI Server.]
  - **Web UI Server only** -- Installs only the AccuRev Web UI Server and AccuRev Client. If you choose this installation option, click **Next** and go to [Installing or Upgrading the AccuRev Web UI Server](#) on page 25 to complete the installation. [Console: Type "2" and press **Enter** to install the Web UI Server only.]
6. **Install Replication** (for new installs only) [Console: "Choose Replication Type"] -- Choose **No replication** [Console: type "1" for None] unless you have already determined (along with AccuRev Support Services) that your site will be implementing one or more replica servers. If you have any questions about AccuRev replication servers, refer to [Considerations for AccuRev Replication Servers](#) on page 11 before continuing.

If you know for a fact that your site is implementing replica servers, select either:

- **"Yes, this is the master"** for the site that will be sending elements out to the replica [Console: type "2" for Master.]
- **"Yes, this is the replica"** for the site (typically remote) that will be connecting to a master server to receive files [Console: type "3" for Replica.]

Proceed through the remainder of the installation program. When prompted for replication options, confirm your choice of master server or replica server as appropriate.

To upgrade an existing replica server, see [Upgrading a Replica Server](#) on page 18.

**Note:** Installing the replica software is only part of the process. Before you can use a newly-installed replica server, you need to configure both it and the master server. Configuration and licensing information about replica servers is located in the "Replication of the AccuRev Repository" and "License Management" chapters in the *AccuRev Administrator's Guide*.

7. **Choose a Folder for AccuRev Server Data Storage** (for new installs only) -- If you do not want to use the `<ac-storage>` default (`<homeDirectory>/accurev/storage` on UNIX/Linux, `C:\Program Files\AccuRev\storage` on Windows), specify a different directory in the **Please Choose a Folder** field. AccuRev creates the folder you specify if it does not already exist.

**Note:** Ensure that the path you specify is LOCAL disk storage (not a network drive) and that it has plenty of space.

Click **Next** to continue. [Console: Press **Enter** to accept the default and continue.]

8. **Choose a Folder for AccuRev Server Database** (not displayed for 7.x.x-to-7.2 upgrades) -- If you do not want to use the default (`<homeDirectory>/accurev/postgresql/9.5` on UNIX/Linux, `C:\Program Files\AccuRev\postgresql\9.5` on Windows), specify a different directory in the **Please Choose a Folder** field. AccuRev creates the folder you specify if it does not already exist.

**Note:** Ensure that the path you specify is LOCAL disk storage (not a network drive) and that it has plenty of space.

Click **Next** to continue. [Console: Press **Enter** to accept the default and continue.]

9. **Configure Database Port and User** (*not displayed for 7.x.x-to-7.2 upgrades*) -- Enter the values for the **Database Port** (`<db-port>`) and **Superuser Name** (`<db-admin-name>`) fields. [Console: Prompts for these values individually.]

Unless the default database port "5075" conflicts with something else on your machine, you should not change the value in the **Database Port** field. Likewise, AccuRev recommends that you keep the default value "postgres" for the **Superuser Name** unless you have a specific reason to change it.

**Note:** If you create a different value for the database superuser, it must be lowercase.

10. **Configure Database Password** (*not displayed for 7.x.x-to-7.2 upgrades*) [Console: "Set Database Superuser Password".] -- In the **Superuser Password** field, enter the value for `<db-admin-pass>` that you chose in [Table 3](#) on page 9. Enter it again in the **Confirm Superuser Password** field. Make sure that you record this password in a secure location for later use.

**Note:** The database password must be lowercase.

11. **Specify License Source** (*not displayed for replica server installations*) -- Select one of the following:

- **Local License File** -- This means that license information should be obtained from a local license file. [Console: type "1" for Local License File.]
- **Remote License Server** -- This means that a different AccuRev master server will serve AccuRev licenses to this AccuRev server. [Console: type "2" for Remote License Server.]

12. **Specify AccuRev License Location** (*only if "Local License File" was specified as the license source*) -- Specify the full path of your local **aclicense.txt** license file. If the Installation Wizard detects an existing **aclicense.txt** file where you have chosen to install AccuRev, it initialized the field to that location. [Console: Press **Enter** to accept the default and continue.]

For more information about licensing, see the "License Management" chapter in the *AccuRev Administrator's Guide*.

13. **Configure Remote License Server** (*only if "Remote License Server" was specified as the license source*) -- Enter values for the following:

- **Host** -- The host name of the AccuRev master license server (which will serve licenses to this AccuRev server)
- **Port** -- The port that the master license server will listen on (typically port 5050)
- **Username** -- The username associated with the Remote License User account on the master license server
- **Password** -- The password for the Remote License User account on the master license server

14. **Upgrade install detected** (*for upgrade installs only*) -- For an upgrade install, the Installation Wizard collects all the remaining information that it needs from the existing installation. Click **Next** and go to the Pre-Installation Summary ([Step 17](#) below). [Console: Press **Enter** to go to the Pre-Installation Summary.]

15. **Configure: Set Host and Port** (*for new installs only*) [Console: Choose Hostname and Port number] -- Review the default values for the **Host** and **Port** fields for the AccuRev Server. You should accept the default values chosen by the Installation Wizard unless you have a good reason to change them. [Console: Review the host name value, then press **Enter** to continue; then review the port value and press **Enter** to continue.]

Click **Next** to continue.

16. **Adjust System PATH Variable** (*for new installs only*) -- Responding **Yes** enables the AccuRev Installation Wizard to modify the PATH environment variable on your system so that you do not need to specify a full path on the command line when using AccuRev commands. Click **Install** to continue. [*Console: Type "y" and press **Enter** to continue.*]  
  
**Note:** You might need to reboot after installation before changes to the PATH environment variable take effect.
17. **Pre-Installation Summary** -- At this point, the Installation Wizard displays all the installation parameters garnered from user input or a previous installation. Click **Install** to continue; otherwise, click **Previous** to change a value. [*Console: Press **Enter** to continue; otherwise, type "back" and then press **Enter** to change a value.*]
18. **Installing AccuRev** -- The Installation Wizard displays a splash screen [*Console: displays "Installing" with a progress bar*] while it installs the software on your local machine. It displays a Please Wait message while it performs configuration tasks.
19. **Database Tuning** -- The Installation Wizard reminds you that you can use database tuning parameters to improve performance. See [Configuring Database Tuning Parameters](#) on page 30 for more information. Click **Next** to continue. [*Console: Press **Enter** to continue.*]
20. **Reminder** (*for 7.x.x-to-7.2 upgrades only*) -- If you are upgrading from an earlier 7.x release to 7.2, the Installation Wizard reminds you to run **maintain dbupgrade** to migrate to the database version that is installed with AccuRev 7.2. Click **Next** to continue. [*Console: Press **Enter** to continue.*]
21. **Configure: Start AccuRev Server** (*for new installs only*) -- In a new installation, the Installation Wizard prompts you to start the AccuRev Server. Accept the default value (**Yes**) unless you want to start it later. Click **Next** to continue.  
  
**Note:** See [Starting and Stopping AccuRev Servers](#) on page 37 if you choose to start the AccuRev Server at a later time.
22. **Configure: Start AccuRev WebUI Server** -- The Installation Wizard prompts you to start the AccuRev Web UI Server. Accept the default value (**Yes**) unless you want to start it later. Click **Next** to continue.  
  
**Note:** See [Installing or Upgrading the AccuRev Web UI Server](#) on page 25 for more information on Web UI Server installation and configuration.
23. **Install Complete** -- The Installation Wizard displays a message when the installation is complete. To exit, click **Done**. [*Console: Press **Enter**.*]
24. **Postgresql Upgrade Required** (*for upgrade installs from a pre-7.0 version*) -- If you are upgrading from AccuRev 5.7 or 6.x, the Installation Wizard reminds you to run **maintain migratepg** to migrate to the new database version.  
  
To exit, click **Done**. [*Console: Press **Enter**.*]

## What to Do Next

What to do after a successful AccuRev installation depends on whether you performed a new installation or an upgrade, as summarized in the following table:

Table 6. Upgrading to AccuRev 7.2

| Installation Type | Next Steps  | For More Information   |
|-------------------|---|--|
| New               | <p>If you chose not to start the AccuRev Server as part of the installation process, you must start it before you can use AccuRev.</p> <p>If you plan to make the AccuRev Web UI available to your users, you must:</p> <ul style="list-style-type: none"><li>Start the Web UI Server if you chose not to start it as part of the installation process</li><li>Configure the Web UI for use with the AccuRev GUI</li></ul>                      | <p>See <a href="#">Starting and Stopping AccuRev Servers</a> on page 37</p> <p>Go to <a href="#">Starting, Stopping, and Testing the AccuRev Web UI Server</a> on page 29</p> <p>Go to <a href="#">Configuring the AccuRev Web UI</a> on page 29</p>                                     |
| Upgrade           | <p>After upgrading to AccuRev 7.2, you need to:</p> <ul style="list-style-type: none"><li>Run a command to migrate your database to the current version installed with AccuRev:<ul style="list-style-type: none"><li><b>maintain migratepg</b>, if you are upgrading from a pre-7.0 version of AccuRev</li><li><b>maintain dbupgrade</b>, if you are upgrading from an earlier 7.x version</li></ul></li><li>Start the AccuRev Server</li></ul> | <p>Go to:</p> <ul style="list-style-type: none"><li><a href="#">Upgrading a Server from a 5.7 or 6.x Version</a> on page 18</li><li><a href="#">Using the 'maintain dbupgrade' Command</a> on page 32</li><li><a href="#">Starting and Stopping AccuRev Servers</a> on page 37</li></ul> |

## Tomcat Customization and AccuRev Upgrades

The AccuRev Web UI uses the Tomcat web server. The following table shows what Tomcat version is installed with what AccuRev version:

| AccuRev Version   | Tomcat Version |
|-------------------|----------------|
| 7.2               | 8.5.29         |
| 7.1               | 8.0.47         |
| 7.0.1             | 8.0.43         |
| 7.0               | 8.0.33         |
| 6.1 through 6.2.3 | 7              |
| Pre-6.1           | 6              |

If you customized the Tomcat web server (e.g., by modifying the **server.xml** file) for an earlier release of AccuRev and are now upgrading to AccuRev 7.2, you must migrate your Tomcat changes to the Tomcat 8.5.29 version that is installed with AccuRev 7.2.

To help you with this process, the upgrade install moves your previous Tomcat installation from the `<AccuRev_install>\WebUI\tomcat` directory to `<AccuRev_install>\WebUI\tomcat.old`. You can examine your old customizations in **tomcat.old** and make comparable changes in the **tomcat** directory.

If you have not customized Tomcat at all, you can safely remove the **tomcat.old** directory after the upgrade install has completed.



# Server and Database Upgrades

This section contains instructions for upgrading AccuRev databases from previous releases to 7.2. Note that if you have existing replica servers, you must also follow the instructions in [Upgrading a Replica Server](#) on page 18. AccuRev strongly recommends that you first perform a trial upgrade of your production data on a separate test machine to determine if you will encounter any issues, and to estimate how long the upgrade is likely to take so that you will know how long your servers will be unavailable to your users.

AccuRev 7.2 supports upgrades from existing 5.7 and later installations. In order to upgrade from a pre-5.7 version, you must first perform an upgrade installation to 5.7 or a 6.x version. (We recommend the latest pre-7.0 version, which is 6.2.3.) Refer to the release notes associated with that release for more detailed information on upgrading from prior versions.

## Upgrading a Server from a 5.7 or 6.x Version

The upgrade process from an AccuRev version 5.7 or 6.x includes a PostgreSQL update. To do this update, you must manually run the **maintain migratepg <db\_admin>** command after the installer completes:

1. Make sure that you have performed the log in and back up steps described in [Before You Begin](#) on page 11 and [Running the AccuRev Installation Wizard](#) on page 12.
2. After the upgrade installation completes, PostgreSQL 9.5 should be running. The AccuRev server will not be running and cannot be started until the migration completes successfully.
3. Run the **maintain migratepg <db\_admin>** command and be sure to specify the same database password (**<db-admin-pass>**) that is used by your existing database.
4. Confirm the PostgreSQL 8.4 database location. Typically this is **<ac-storage>/db/**.
5. Confirm the location of the pg\_dump backup file. This defaults to **<ac-storage>/slice/backup/**. The backup file will be roughly equivalent in size to your database, so be sure that you have enough free disk space in the selected location.
6. The migratepg process will then perform the following steps:
  - Start PostgreSQL 8.4 server.
  - Backup the 8.4 metadata.
  - Stop the PostgreSQL 8.4 server.
  - Start PostgreSQL 9.5 if it is not already running.
  - Restore the 8.4 metadata into 9.5.
  - Upgrade the database schema if needed.
  - Move the PostgreSQL 8.4 binaries to **<ac-install>/postgresql/8.4/**.
  - Move the **<ac-storage>/db/** directory to **<ac-install>/postgresql/8.4/db/**. (If unable to move, the db directory will be renamed.)

## Upgrading a Replica Server

Use these instructions to upgrade an existing AccuRev replica server:

1. Perform a full backup and ensure that you have enough disk space as discussed above in [Before You Begin](#) on page 11.

**If your site uses AccuWork:** For every replicated depot that has AccuWork issues, copy the entire `<ac-storage>/depots/<depotName>/di spatch` directory from the master server to each replica server. *Tip:* Run `"accurev show sl i ces"` to see the exact locations of your depots.

2. Proceed with the installation as if the replica server were a master server. See [Upgrading a Server from a 5.7 or 6.x Version](#) on page 18.
3. After the upgraded replica server has started, execute the following command against the replica server:

```
accurev replica sync
```

## Installing or Upgrading an AccuRev Client

This section describes the methods available to install and upgrade AccuRev Client software. Beginning with Release 7.2, the AccuRev Client installers for 64-bit Windows, 64-bit Linux, and macOS High Sierra 10.13+ also install the AccuRev Git Client.

**Note:** In this section, any instructions or comments about the UNIX/Linux platform apply to Linux, Solaris, AIX, and Mac OS X platforms.

### Installation Methods

There are two methods for installing or upgrading the AccuRev Client:

- An *interactive* AccuRev Client-only installation requires the user to run an Installation Wizard and provide information during the installation process. There are two possible ways to accomplish this:
  - If you download the Client-only installation package to the client machine and run the installation executable manually, you can run the installation package with a graphical user interface (GUI) or as a console (text-only) application. See [Using the AccuRev Client-only Installation Package](#) on page 20 for more information.
  - If you are upgrading an AccuRev version 5.7 (or later) client, and someone (typically, the system administrator) has already downloaded the installation package to the AccuRev server, copied it to the appropriate location, and renamed it as described in [Enabling the Client Upgrade feature](#) on page 21, then you can automatically start the installation by selecting the **Help -> Upgrade Client** option in the AccuRev GUI or by using the `accurev upgrade_cl i ent` in the CLI.
- A *"silent"* AccuRev Client installation is typically used by the AccuRev administrator to automate the client installation or upgrade process in a distributed or networked environment. "Silent" installations are run from the command line and do not require any interaction by the end-user. See [Using "Silent" Client Installations](#) on page 23 for more information.

*Tip:* Ask your AccuRev administrator if the "silent" client installation method has been implemented at your site.

### Before You Begin

Regardless of which installation method you use, review the following steps before installing or upgrading the AccuRev Client:

1. Read the [Platform Support Notes](#) on page 39 for your operating system before proceeding, and follow the instructions there.



2. (*Mac OS X users only*) If you are installing the AccuRev Client on Mac OS X 10.7.5 or later, make sure the Gatekeeper feature is set to allow applications to be downloaded from **Anywhere**. To access this setting from the Apple menu, go to **System Preferences... > Security & Privacy > General** tab.

If the **Anywhere** option is not available, the following workaround is required:

- Open a Terminal with appropriate privileges (**sudo bash** to make you root on most systems).
- Enter the following command (specify the appropriate path to the AccuRev installer):  
**xattr -cr AccuRevClientInstall.app**

*Tip:* The AccuRev Client displays a notification message if it requires upgrading. This can happen when the AccuRev Server has been upgraded but the AccuRev Client has not. The notification message gives the user the option of downloading the AccuRev Client-only installation package directly from the AccuRev Server.

## Uninstalling Existing AccuRev Clients

If you are upgrading an AccuRev client, you do not need to uninstall any existing software. The AccuRev Installation Wizard lets you preserve your development data and configuration files, and installs the upgrade in the same place as your existing version.

## Using Native Shells

AccuRev recommends using only shells that are native to/installed with the OS.

## Using the AccuRev Client-only Installation Package

The AccuRev Client-only installation package lets you install a new AccuRev Client or upgrade an existing installation.

## Downloading the Client-only Installation Package

If you have not already done so, take the following steps to download AccuRev client-only installation packages:

1. Navigate to Product Updates on the Micro Focus Support Line page:  
<http://supportline.microfocus.com/>
2. Select a search mechanism, then click **Find Updates**.
3. Check the license agreement, and then expand the **Product** and **Version** tabs to locate the appropriate AccuRev release.
4. Locate the client-only installation packages you require and click the download button.
5. Depending on the installation package you have chosen, the downloaded file is a
  - **.exe** file for Windows,
  - **.bin** file for UNIX/Linux, or
  - **.zip** file for Mac OS X and AIX.

Save this file to the appropriate location, which depends on your preferred method of installation:

- If you are a user planning to install AccuRev on your client machine manually, save the file to your client machine.

- If you are an administrator who intends to make the file available to your users so that they can get the file, copy it to their client machines, and run it manually, then save the file to some location and inform your users where they can get the file to install it themselves.
- If you are an administrator and you want to enable the **Client Upgrade** feature for users who have an existing installation of AccuRev 5.7 or later, then save the file to the appropriate location on the AccuRev server and rename the file as described in the following section, *Enabling the Client Upgrade feature*.

## Enabling the Client Upgrade feature

**Note:** The Client Upgrade feature is not supported on the AIX platform

If you are an administrator and you want to enable the **Client Upgrade** feature, take the following steps:

1. Download the client as described in *Downloading the Client-only Installation Package*.
2. When prompted, rename the file you just downloaded according to the operating system

*Table 7. Operating System and Names*

| Operating System | File Name                |
|------------------|--------------------------|
| Windows          | AccuRevClientInstall.exe |
| UNIX/Linux       | AccuRevClientInstall.bin |
| Mac OS X         | AccuRevClientInstall.zip |

and copy it to the appropriate appropriate directory under <ac-install>/bin/installers. For example, if you downloaded **accurev-7.2-windows-clientonly.exe** on a Windows machine, then save it to **c:\Program Files\AccuRev\bin\installers\Windows\AccuRevClientInstall.exe**.

**Important :** Client-only install packages must be named as mentioned in table *Operating System and Names* or they will not be recognized by the client upgrade feature.

The client-only installation package is now available for AccuRev users, who can automatically upgrade their AccuRev client by selecting **Help > Upgrade Client** in the GUI or by using the `accurev upgrade_client` in the CLI.

## Running the Client-only Installation Package

To run the AccuRev Client-only installation package, take the following steps:

1. Start the installation:
  - If you are running the installation manually on your client, proceed to step 2.
  - If the Client Upgrade feature has been enabled as described in the previous section, *Enabling the Client Upgrade feature*, start the installation by selecting **Help > Upgrade Client** in the GUI or by using the `accurev upgrade_client` in the CLI.
2. If you are manually installing AccuRev on your client machine, start the AccuRev Client Installation Wizard using the applicable procedure:

*Table 8. Starting the AccuRev Client Installation Wizard*

| Platform | Installation Mode | Run This Procedure   |
|----------|-------------------|--|
| Windows  | GUI               | <b>accurev-n.n.n-windowsclientonly.exe</b><br>where -n.n.n is the AccuRev version number<br><b>accurev-7.2-windowsclientonly.exe</b> , for example |

Table 8. Starting the AccuRev Client Installation Wizard

| Platform   | Installation Mode    | Run This Procedure  |
|------------|----------------------|---|
|            | Console (text-based) | <b>accurev-n.n.n-windowsclientonly.exe -i console</b><br>where -n.n.n is the AccuRev version number<br><b>accurev-7.2-windowsclientonly.exe -i console</b> , for example  |
| UNIX/Linux | GUI                  | <b>sh accurev-n.n.n-platform.bin</b><br>where:<br><ul style="list-style-type: none"> <li>▪ -n.n.n is the AccuRev version number</li> <li>▪ platform is the UNIX/Linux platform name</li> </ul> <b>sh accurev-7.2-linuxclientonly-x86.bin</b> , for example  |
|            | Console (text-based) | <b>sh accurev-n.n.n-platform.bin -i console</b><br>where:<br><ul style="list-style-type: none"> <li>▪ -n.n.n is the AccuRev version number</li> <li>▪ platform is the UNIX/Linux platform name</li> </ul> <b>sh accurev-7.2-linuxclientonly-x86.bin -i console</b> , for example                              |
| Mac OS X   | GUI                  | Double-click the accurev-n.n.n-macosx-clientonly.zip to extract the AccuRevClientInstall install package where:<br><ul style="list-style-type: none"> <li>▪ -n.n.n is the AccuRev version number.</li> </ul> Double-click AccuRevClientInstall install package to launch the installer.                       |
|            | Console (text-based) | Double-click the accurev-n.n.n-macosx-clientonly.zip to extract the AccuRevClientInstall install package where:<br><ul style="list-style-type: none"> <li>▪ -n.n.n is the AccuRev version number.</li> </ul> On the command line, run:<br><b>AccuRevClientInstall.app/Contents/MacOS/AccuRevClientInstall</b> |
| AIX        | Console (text-based) | Move the downloaded file accurev-n.n.n-aix-clientonly-binaries.zip from <i>&lt;installer-loc&gt;</i> to <i>&lt;ac-install&gt;</i> .<br><ul style="list-style-type: none"> <li>▪ Unzip accurev-n.n.n-aix-clientonly-binaries.zip</li> </ul>  |

*Tip:* If you are installing the AccuRev Client from the console you can type:

- **"back"** to return to the previous prompt in the installation program
- **"quit"** to exit the installation program

**Shutdown Existing AccuRev Apps** -- When you start the AccuRev Client Installation Wizard, it first reminds you to shut down any existing AccuRev applications. Click **Next** to continue. [*Console: Press **Enter** to continue.*]

**Note:** The remaining steps in this section are not relevant to AIX installation.

3. **License Agreement** -- Before you can proceed, you must click "I accept the terms of the License Agreement." and then click **Next** to continue. [*Console: You can type "y" to agree, "n" to refuse, or press **Enter** to page through the license agreement.*]
4. **Choose Install Folder** -- Specify a different directory if you do not want to use the *<ac-install />* defaults: *<homeDir rectory>/AccuRevClient* on UNIX/Linux, *C:\Program Files\AccuRevClient* on 64-bit Windows, *C:\Program Files (x86)\AccuRevClient* on 32-bit Windows. (See *Determine Configurable Elements* on page 9 if you are not familiar with the values represented by *<ac-install />* and *<homeDir rectory>*.)

- If you are installing software for the first time and do not wish to use the default location, specify a location where you have write permission.
- If you are upgrading and the existing installation is not at the default location, specify your existing AccuRev installation directory.

Click **Next** to accept the default and continue. *[Console: Press **Enter** to accept the default and continue.]*

5. **Configure: Set Host and Port** *[Console: Choose What Server to Connect To]* -- Specify the values for the **Host** and **Port** fields for the AccuRev Server to which this client will connect. You should accept the default value for the server port chosen by the Installation Wizard unless you have a good reason to change it. Click **Next** to continue. *[Console: Prompts for these values individually. Type a value for the host name and press **Enter** to continue. Review the value for the port number and press **Enter** again to continue.]*
6. **Adjust System PATH Variable** -- Responding **Yes** enables the AccuRev Client Installation Wizard to modify the PATH environment variable on your system so that you do not need to specify a full path on the command line when using AccuRev commands. Click **Next** to continue. *[Console: Enter "y" and press **Enter** to continue.]*

**Note:** You might need to reboot after installation before changes to the PATH environment variable take effect.

7. **Pre-Installation Summary** -- At this point, the Installation Wizard displays a summary of the choices you have made regarding your installation. Click **Install** to continue; otherwise, click **Previous** to change a value. *[Console: Press **Enter** to continue; otherwise, type "back" and then press **Enter** to change a value.]*
8. **Installing AccuRevClient** -- The Installation Wizard displays a splash screen *[Console: displays "Installing..." and a progress bar]* while it installs the software on your local machine. It displays a Please Wait message while it performs configuration tasks.
9. **Installation Complete** -- The Installation Wizard displays a message when the installation is complete. Click **Next** to exit the program. *[Console: Press **Enter** to exit the program.]*

**Note:** If you are using the GUI installation wizard, when the installation is complete you are given the opportunity to start the AccuRev user interface. To start the AccuRev user interface, accept the default value of **Yes** and click **Done**. Otherwise, select **No** and click **Done**.

## Using "Silent" Client Installations

So-called "silent" client installations allow the AccuRev Client software to be installed or upgraded in an automated fashion, without requiring any interaction or input by the user on whose machine the AccuRev Client is being installed. "Silent" client installations are particularly useful when AccuRev Client installations or upgrades can be performed by a centralized software distribution mechanism. "Silent" client installations provide a highly efficient mechanism for large AccuRev deployments to keep pace with current versions of AccuRev.

**Note:** The "silent" upgrade is not supported for Mac OS X clients.

### Overview

In a "silent" client installation, the Client-only installation package is pushed to each client machine. Then, an AccuRev Client is installed manually on a single machine using a command line option to create a *response file*. The response file records choices made during installation of the AccuRev Client, including:

- Installation directory
- The host (or IP address) and port number associated with the AccuRev Server
- Whether or not "*<ac-install>/bin*" should be added to the user's path. See *Determine Configurable Elements* on page 9 if you are not familiar with the value represented by *<ac-install>*.

The response file resulting from the manual installation can then be used as input by the "silent" client installer to automate the installation process on your system's clients. Note that if you have clients on multiple platforms (Windows and Linux, for example), you must perform one manual client installation on each of them to create platform-specific response files.

**Sample Response File.** An example response file for a Windows installation is shown here:

```
# Wed Aug 01 17:50:06 EDT 2012
# Reply feature output
# -----
# This file was built by the Reply feature of InstallAnywhere.
# It contains variables that were set by Panels, Consoles or Custom Code.

#Choose Install Folder
#-----
USER_INSTALL_DIR=C:\Program Files\myAccuRev

#Configure: Set Host and Port
#-----
HOST_NAME_INPUT=local host
HOST_PORT_INPUT=5050

#Adjust System PATH Variable
#-----
ADD_TO_PATH_INPUT_RESULTS="\Yes\", \"\"
ADD_TO_PATH_INPUT_RESULTS_1=Yes
ADD_TO_PATH_INPUT_RESULTS_2=
ADD_TO_PATH_INPUT_RESULTS_BOOLEAN_1=1
ADD_TO_PATH_INPUT_RESULTS_BOOLEAN_2=0

#Install
#-----
-fileOverwrite_C:\Program Files\myAccuRev\bin\UninstallerData\Uninstall\
AccuRev.Iax=Yes
-fileOverwrite_C:\Program Files\myAccuRev\bin\UninstallerData\resource\iawin32.dll=Yes
-fileOverwrite_C:\Program Files\myAccuRev\bin\UninstallerData\resource\win64_32_x64.exe=Yes
```

```
-fileoverwrite_C:\Program\
Files\myAccuRev\bin\UninstallerData\resource\remove.exe=Yes
-fileoverwrite_C:\Program\ Files\myAccuRev\bin\vcridist_x86_2010.exe=Yes
-fileoverwrite_C:\Program\ Files\myAccuRev\bin\vcridist_x64_2010.exe=Yes
-fileoverwrite_C:\Program\ Files\myAccuRev\bin\acgui.lax=Yes
-fileoverwrite_C:\Program\ Files\myAccuRev\bin\acdi ffgui.lax=Yes
-fileoverwrite_C:\Program\ Files\myAccuRev\bin\accli ent.cnf=Yes
-fileoverwrite_C:\Program\ Files\myAccuRev\LICENSE.TXT=Yes
```

```
#Start AccuRev User Interface
#-----
START_UI_INPUT_RESULTS="\\", "No\"
START_UI_INPUT_RESULTS_1=
START_UI_INPUT_RESULTS_2=No
START_UI_INPUT_RESULTS_BOOLEAN_1=0
START_UI_INPUT_RESULTS_BOOLEAN_2=1
```

## Creating the Response File

To create the response file, run the AccuRev Client-only installer from the command line. Use the **-r** *<filename>* option to specify the full path of the response file. Note that if you have clients on multiple platforms (Windows and Linux, for example), you must run the client installation procedure on one machine on each platform in order to create platform-specific response files.

### Windows example

```
<installer_loc>\accurev-7.2-windowsclientonly.exe -r c:\tmp\ac_wi_n_instal.l.out
```

### UNIX/Linux example

```
<installer_loc>/accurev-7.2-linuxclientonly-x86.bin
-r /tmp/ac_linux_instal.l.out
```

## Running a "Silent" Installation

Once you have created the response file for a given platform, you can use it to perform automated "silent" installations on other clients for that platform. To run a "silent" installation, invoke the AccuRev Client-only installation package from the command line. Use the **-i silent** option to specify the installation type, and the **-f** *<filename>* option to specify the full path of the response file to use as input.

### Windows example

```
<installer_loc>\accurev-7.2-windowsclientonly.exe -i silent
-f c:\tmp\ac_wi_n_instal.l.out
```

### UNIX/Linux example

```
<installer_loc>/accurev-7.2-linuxclientonly-x86.bin -i silent
-f /tmp/ac_linux_instal.l.out
```

# Installing or Upgrading the AccuRev Web UI Server

This section provides background information and procedures for installing or upgrading the AccuRev Web UI Server as a standalone installation using the AccuRev Installation Wizard.

This section is intended for the AccuRev administrator. If you are an end user and want to use the Web UI *client*, you simply need to open a supported Web browser and point it to an existing Web UI Server using URL information provided to you by your administrator.

**Note:** If you have already installed AccuRev as described in [Step 5 of \*Running the AccuRev Installation Wizard\*](#) on page 12, the AccuRev Web UI Server is already installed. Go to [What to Do Next](#) on page 28.

## Before You Begin

Before running the AccuRev Installation Wizard:

1. **Log in** -- Log in to the machine on which you will be installing the AccuRev Web UI Server. Log in as `<ac-user>` (UNIX/Linux) or a user with installation privileges (Windows). (See [Before You Begin](#) on page 11 to learn about creating `<ac-user>` on UNIX/Linux machines.)

**Note:** For security reasons, you CANNOT install the AccuRev server on UNIX/Linux if you are logged in as `root`.

2. **Stop the AccuRev Tomcat Server** -- If you are upgrading an existing AccuRev Web UI Server, you must stop the AccuRev Tomcat Server.
3. **IMPORTANT: Verify that the Tomcat process has stopped** -- The Tomcat process sometimes continues even when the Tomcat service has been stopped. Manually terminate the process if necessary.

## How to Run the AccuRev Web UI Server Installation Wizard

This section describes how to install the AccuRev Web UI Server using the AccuRev Installation Wizard. If you are running the Installation Wizard in console mode, instructions are displayed in italicized brackets, *[Like this.]*

To run the AccuRev Installation Wizard:

1. **Start the Installation Wizard** -- Start the AccuRev Installation Wizard you downloaded from the Micro Focus SupportLine web site by double-clicking the installer icon, or by entering the installer name on the command line as summarized in the following table. Note that the installation program can be run with a graphical user interface (GUI) or as a console (text-only) application.:

*Table 9. Starting the AccuRev Installation Wizard*

| Platform   | Installation Mode    | Run This Procedure   |
|------------|----------------------|--|
| Windows    | GUI                  | <code>accurev-n.n.n-windows.exe</code><br>where <i>-n.n.n</i> is the AccuRev version number<br><code>accurev-7.2-windows.exe</code> , for example  |
|            | Console (text-based) | <code>accurev-n.n.n-windows.exe -i console</code><br>where <i>-n.n.n</i> is the AccuRev version number<br><code>accurev-7.2-windows.exe -i console</code> , for example  |
| UNIX/Linux | GUI                  | <code>sh accurev-n.n.n-platform.bin</code><br>where:<br><ul style="list-style-type: none"> <li>▪ <i>-n.n.n</i> is the AccuRev version number</li> <li>▪ <i>platform</i> is the UNIX/Linux platform name</li> </ul> <code>sh accurev-7.2-linux-x86</code> , for example |



Table 9. Starting the AccuRev Installation Wizard

| Platform | Installation Mode    | Run This Procedure  |
|----------|----------------------|---|
|          | Console (text-based) | <b>sh accurev-n.n.n-platform.bin -i console</b><br>where: <ul style="list-style-type: none"> <li>▪ -n.n.n is the AccuRev version number</li> <li>▪ platform is the UNIX/Linux platform name</li> </ul> <b>sh accurev-7.2-Linux_x86 -i console</b> , for example |

*Tip:* If you are installing AccuRev from the console you can type:

- **"back"** to return to the previous prompt in the installation program
- **"quit"** to exit the installation program

2. **License Agreement** -- Before you can proceed, you must click "I accept the terms of the License Agreement." and then click **Next** to continue. [*Console: You can type "y" to agree, "n" to refuse, or press **Enter** to page through the license agreement.*]
3. **Choose Install Folder** -- Specify a different directory if you do not want to use the `<ac-install>` defaults: `<homeDirectory>/accurev` on UNIX/Linux, `C:\Program Files\AccuRev` on Windows. (See *Determine Configurable Elements* on page 9 if you are not familiar with the values represented by `<ac-install>` and `<homeDirectory>`.)
  - If you are installing software for the first time, and do not wish to use the default location, specify a location where you have write permission.
  - If you are upgrading and the existing installation is not at the default location, specify your existing AccuRev installation directory.

Click **Next** to accept the default and continue. [*Console: Press **Enter** to accept the default and continue.*]

4. **Upgrade install detected (for upgrade installs only)** -- For an upgrade install, the Installation Wizard collects all the remaining information that it needs from the existing installation. Click **Next** and go to the Pre-Installation Summary (Step 8 below). [*Console: Press **Enter** to go to the Pre-Installation Summary.*]
5. **Choose Installation Type** -- Select **Web UI Server only** and then click **Next** to continue. [*Console: Type "2" and press **Enter** to continue.*]
6. **Configure: Set Host and Port** -- In the **Host** and **Port** fields, set values for the AccuRev Server that the Web UI will use and click **Next** to continue. [*Console: Prompts for these values individually. Type a value and press **Enter** to continue.*]
7. **Adjust System PATH Variable** -- Responding **Yes** enables the AccuRev Installation Wizard to modify the PATH environment variable on your system so that you do not need to specify a full path on the command line when using AccuRev commands. Click **Next** to continue. [*Console: Type "y" and press **Enter** to continue.*]

**Note:** You may need to logout and login again after installation in order for changes to the PATH environment variable to take effect.

8. **Pre-Installation Summary** -- At this point, the Installation Wizard displays all the installation parameters garnered from user input or a previous installation. Click **Install** to continue; otherwise, click **Previous** to change a value. [*Console: Press **Enter** to continue; otherwise, type "back" and then press **Enter** to change a value.*]



9. **Installing AccuRev** -- The Installation Wizard displays a splash screen [*Console: displays "Installing" with a progress bar*] while it installs the software on your local machine. It displays a Please Wait message while it performs configuration tasks.
10. **Configure: Start AccuRev WebUI Server** -- In a new installation, the Installation Wizard prompts you to start the AccuRev Web UI Server. Accept the default value (**Yes**) unless you want to start it later. Click **Next** to continue. [*Console: Press **Enter** to continue.*]
11. **Install Complete** -- The Installation Wizard displays a message when the installation is complete. Click **Done** to exit. [*Console: Press **Enter** to exit.*]

## What to Do Next

The following table summarizes tasks you should consider performing after installing the AccuRev Web UI Server. See also [Tomcat Customization and AccuRev Upgrades](#).

Table 10. After Installing the AccuRev Web UI Server

| Task   | Comments   |
|--|--|
| Start the Web UI Server.   | You need to start the Web UI Server to make the AccuRev Web UI available to your users.<br><br>If you did not start the AccuRev Web UI Server during the installation process, see <a href="#">Starting, Stopping, and Testing the AccuRev Web UI Server</a> on page 29.   |
| Test the Web UI  | Before informing your users that the AccuRev Web UI is available, perform a simple test to make sure that it is working as you expect.<br><br>See <a href="#">Testing the AccuRev Web UI</a> on page 29.   |
| Configure the Web UI Server to make it accessible by IDE plug-ins for AccuRev. | AccuRev has plug-ins for numerous IDEs like Eclipse and Visual Studio. To be able to access the AccuRev Web UI in these IDEs, you need to create a configuration file on the AccuRev Web UI Server.<br><br>See <a href="#">Configuring the AccuRev Web UI</a> on page 29.  |
| Review advanced configuration settings.  | You can use a configuration file to change the default session timeout, provide access to multiple AccuRev Servers, and more. These and other advance topics are described in the <a href="#">AccuRev Web Interface Administrator's Guide</a> .<br><br>See <a href="#">Post-Installation Information</a> on page 30. |

## Tomcat Customization and AccuRev Upgrades

The AccuRev Web UI uses the Tomcat web server. The following table shows what Tomcat version is installed with what AccuRev version:

| AccuRev Version   | Tomcat Version |
|-------------------|----------------|
| 7.2               | 8.5.29         |
| 7.1               | 8.0.47         |
| 7.0.1             | 8.0.43         |
| 7.0               | 8.0.33         |
| 6.1 through 6.2.3 | 7              |
| Pre-6.1           | 6              |

If you customized the Tomcat web server (e.g., by modifying the **server.xml** file) for an earlier release of AccuRev and are now upgrading to AccuRev 7.2, you must migrate your Tomcat changes to the Tomcat 8.5.29 version that is installed with AccuRev 7.2.

To help you with this process, the upgrade install moves your previous Tomcat installation from the `<AccuRev_install>\WebUI\tomcat` directory to `<AccuRev_install>\WebUI\tomcat.old`. You can examine your old customizations in **tomcat.old** and make comparable changes in the **tomcat** directory.

If you have not customized Tomcat at all, you can safely remove the **tomcat.old** directory after the upgrade install has completed.

## Starting, Stopping, and Testing the AccuRev Web UI Server

Linux shell (**.sh**) and Windows batch (**.bat**) scripts are provided for stopping and starting the Tomcat web server for the AccuRev Web UI:

```
<ac-install>/WebUI/tomcat/bin/[ startup | shutdown ]. [ sh | bat ]
```

## Testing the AccuRev Web UI

To test the AccuRev Web UI, open a browser and enter the following URL:

```
http://<webui-host>:8080/accurev
```

If this does not display an AccuRev login window, try restarting the AccuRev Web UI Tomcat server. See *Starting, Stopping, and Testing the AccuRev Web UI Server* on page 29. If the Web UI appears as expected, you can make this URL available to users to whom you want to provide access to the AccuRev Web UI.

Also, if you want to make the Web UI accessible through your users' AccuRev GUI, you should ensure that the AccuRev installation is included in their PATH setting. If they try to open the Web UI from the AccuRev GUI (using the **View > Open in Web** choice on the AccuRev GUI menu, for example) and the Web UI login screen appears but does not display a valid server to connect to, the PATH is probably not set correctly.

## Configuring the AccuRev Web UI

This section describes how to configure the AccuRev Web UI to make it available to:

- The AccuRev GUI (some features in the AccuRev GUI make use of the Web UI)
- AccuRev IDE integrations (like the Eclipse plug-in for AccuRev, for example)

You do this by creating a **settings.xml** file on the AccuRev Server as described in the following procedure.

### Creating the settings.xml file

Instructions for creating this file are found in the AccuRev *Installation and Release Notes* for each integration, but in summary:

1. Shut down any third-party packages.
2. Create a file called `settings.xml` in the `<ac-install>/storage/site_slice/dipatch/config` directory.
3. Edit the file to add the lines shown below (replacing `<webui-host>` with the actual name of the host providing access to the AccuRev Web UI), and save it.

```
<settings>
```

```
<webui url="https://<webui -host>: 8080/accurev" />
</setti ngs>
```

(If necessary, change the port from “8080” to the value in use at your site.)

**Note:** Refer to the installation and release notes for specific AccuRev integrations (Eclipse and Visual Studio plug-ins, for example) for additional information specific to your third-party IDE.

4. Restart any third-party packages shut down in Step 1.

## Post-Installation Information

See the *AccuRev Web Interface Administrator’s Guide* for post-installation configuration information.

## Configuring Database Tuning Parameters

Use these instructions to set the database tuning parameters that will allow the database to make the best use of your system resources. You should do this after installing AccuRev but before starting the server and before running the **maintain migratepg** or **migrate dbupgrade** command.

1. Log in as *<ac-user>*.
2. Ensure that the database server is stopped using the procedures described in *Starting and Stopping AccuRev Servers* on page 37.
3. To improve database performance you may elect to increase the amount of memory allocated exclusively to PostgreSQL by editing *<ac-storage>/db/postgresql.conf*.
  - (*non-Windows platforms*) Note that editing **postgresql.conf** could also require you to alter part of your operating system's kernel configuration and possibly reboot your system. Read the section applicable to your operating system at <http://www.postgresql.org/docs/9.5/static/kernel-resources.html> for more information.
  - **shared\_buffers** – Change to 512MB or 25% of total physical memory installed on the machine running AccuRev, whichever is less.
  - **effective\_cache\_size** – Set to 75% of free physical memory reported by the operating system when both AccuRev and the database are stopped (see *Starting and Stopping AccuRev Servers* on page 37).

Free physical memory can be estimated as follows:

- UNIX/Linux (expressed in MB):

```
free -m | awk '/buffers.cache/{print $4}'
```
- Windows Server 2008/Windows 7 or later (expressed in MB): Access the Performance tab on the Windows Task Manager. Use only the Available value under “Physical Memory”.

| Physical Memory (MB) |      |
|----------------------|------|
| Total                | 8181 |
| Cached               | 3731 |
| Available            | 3887 |
| Free                 | 189  |

- Other operating systems: You may be able to use the **top** command; refer to your operating system vendor’s documentation.

**Note:** On 64-bit operating systems with more than 4GB of memory, the `effective_cache_size` is not limited to 4GB, as it does not reflect memory allocated by PostgreSQL. This setting is an estimate of the amount of memory available to the operating system for filesystem caching.

4. Start the AccuRev Database Server process according to the instructions in *Starting and Stopping AccuRev Servers* on page 37.

## Using the ‘maintain dbupgrade’ Command

The **maintain dbupgrade** command is used to upgrade your existing AccuRev database after you have upgraded your AccuRev server. This command is used when upgrading to any pre-7.0 release *or* when upgrading from an earlier 7.x version to 7.2.

**NOTE:** Upgrading from a 5.7 or 6.x version to 7.0 or later requires the use of **maintain migratepg** instead of **maintain dbupgrade**. See [Upgrading a Server from a 5.7 or 6.x Version](#) on page 18 for information about **maintain migratepg**.

For 4.x databases (4.7 or higher), **dbupgrade** performs these tasks:

- Performs validation and cleanup of 4.x metadata records.
- Converts the metadata to UTF-8 for proper internationalization support.
- Imports the metadata to the third-party database used with AccuRev 5.x.

For 5.0.1 and higher databases, **dbupgrade** upgrades the AccuRev database schema. (5.0.5 and 5.2 databases are already internationalized, so they do not require UTF-8 conversion.)

**IMPORTANT:** Before performing the **dbupgrade** operation, ensure that you have tuned your database as described in [Configuring Database Tuning Parameters](#) on page 30, and have restarted your database so that the tuning parameters take effect. Also ensure that you have left yourself an adequate window of time: each **dbupgrade** run can take several hours, particularly if you are performing trial runs and upgrades on a test machine that is not particularly fast.

You will be prompted to perform the **dbupgrade** process in two steps:

1. In "trial run" mode, to evaluate how the upgrade process will succeed.
2. In "force" mode, where your database will actually be converted.

See the "The ‘maintain’ Utility" chapter of the AccuRev *Administrator’s Guide* for more details about this utility.

### Performing a "Trial Run" Upgrade

To begin the upgrade process, change to the `<ac-i nstal l > /bi n` directory and enter the following at the command line:

```
maintain dbupgrade <db-admi n-name>
```

You will be prompted for `<db-admi n-pass>`, and then asked whether you want to run the upgrade as a “trial run”, using a default codepage of “CP1252” (a superset of ISO-8859-1). Performing the conversion as a trial run means that your database will not be changed, but you will be notified of any issues so you can determine whether or not to repeat the upgrade in non-trial mode (and actually convert your database).

The codepage specification allows **dbupgrade** to attempt a reasonable conversion of your existing data to UTF-8. The default CP1252 codepage (“Western European”), although considered as “Windows” codepage, is a superset of ISO-8859-1 and is a reasonable starting point for both Windows and Linux servers, especially in mixed environments. Only specify a different codepage if you know for certain that you use a different one at your site.

When prompted whether or not you wish to proceed with a trial run, answer **Y** to perform the trial upgrade. (**N** performs a real upgrade that will modify your data.)

The upgrade process can take several hours, depending on factors such as your hardware, the size of your database, system load, etc. All information is captured in the following log files:

- `<ac-storage>/site_slice/logs/dbupgrade.log`
- `<ac-storage>/site_slice/logs/dbupgrade_18n_report.html`

If you make multiple **dbupgrade** runs, any existing log files are backed up with time-stamp names. It is critical that you get a successful trial run, and review the logs for any problems prior to performing an actual database upgrade. If you have any questions about the results, you should contact Micro Focus SupportLine (<https://supportline.microfocus.com>).

See *Understanding maintain dbupgrade Messages* on page 33 for descriptions of messages that appear during the upgrade.

## Understanding maintain dbupgrade Messages

During the data migration, several AccuRev tables will be altered, resulting in some or all of the messages described in this section.

### Messages from maintain dbupgrade

When the upgrade completes successfully, a message like the following appears at the end of the output:

```
AccuRev 4.x to 5.x metadata migration completed without errors in 0.11
minutes.
```

```
*** The AccuRev database has been upgraded.
```

```
The AccuRev Server is ready to be started.
```

If errors are detected during the migration, a message similar to the one shown below will appear at the end of the output:

```
AccuRev 4.x to 5.x metadata migration completed with errors in 0.11 minutes.
```

```
*** Errors were detected during the 4.x to 5.x metadata migration
processing.
```

```
See /opt/accurev/storage/site_slice/logs/dbupgrade.log for details.
```

```
The AccuRev Server WILL NOT start until the upgrade is successful.
```

```
Please contact AccuRev Service for assistance.
```

Additional details are available in the file `<ac-storage>/site_slice/logs/dbupgrade.log`.

See the following section, *Messages from the dbupgrade.log File*, for details on locating and interpreting the reasons for any failures.

## Messages from the dbupgrade.log File

**Note:** Please store the `<ac-storage>/site_slice/logs/dbupgrade.log` file in a safe place. It contains information that could assist AccuRev Support Services with troubleshooting any data migration or database upgrade issues.

The `dbupgrade.log` file consists of log entries of the following severity levels, in ascending order:

- **INFO** -- Status messages indicating what the **dbupgrade** utility is doing at a particular point in time. The intended audience for this category of messages is primarily AccuRev Support Services.
- **NOTICE** -- Messages that record information about the **dbupgrade** operation that might be of interest to the user. Example: [Translations of non-ASCII characters from CP1252 to UTF-8 will be reported in C:/Program Files/AccuRev/storage/site\\_slice/logs/dbupgrade\\_i18n\\_report.html](#)
- **WARNING** -- These messages indicate that **maintain dbupgrade** encountered an issue that may require your attention but does not necessarily constitute a reason to fail the data migration/upgrade. You must evaluate any WARNING messages and determine if you can proceed with the results of the **dbupgrade** operation. See the examples and additional information in [Warning Messages](#) on page 34.
- **FATAL** -- These messages indicate that **maintain dbupgrade** encountered a serious problem that prevented it from completing. You must address any FATAL issue (usually with the help of AccuRev Support Services) and rerun **dbupgrade** before proceeding.

As an end-user, you should only be concerned with WARNING and FATAL entries.

## Warning Messages

### Warning message example #1:

```
0 Unable to find storage location for depot: depot_name: /path-to-storage/depots/
depot_name
-Error- 1 - prj.c:211 - Unable to initialize depot - System Error: 2 No such file or
directory
WARNING: Depot 'depot_name' skipped: Unable to initialize: No such file or
directory: OS error: see above
```

### Explanation:

Ensure that the depot is supposed to still be active, and that the data for the depot is actually present on the system. You may need to use either the **chslice** or **rmdepot** AccuRev commands to remedy the problem. This condition is most likely to occur during a trial run on a test machine (as opposed to "in-place" -- see [Performing a Trial Upgrade on a Test Machine](#) on page 18.)

### Warning message example #2:

```
WARNING: Would migrate site... FAILED
WARNING: Would migrate depot 'depot_name'... FAILED
WARNING: Migrating site... FAILED
WARNING: Migrating depot 'depot_name'... FAILED
WARNING: Would upgrade site... FAILED
WARNING: Would upgrade depot 'depot_name'... FAILED
WARNING: Upgrading site... FAILED
WARNING: Upgrading depot 'depot_name'... FAILED
```

### Explanation:

One or more errors have occurred which prevented the site **slice/depot** in question from being migrated or upgraded. One or more corresponding log entries with severity FATAL should be present in `dbupgrade.log` prior to this WARNING entry, with the specific reasons for the errors.

### Warning message example #3:

```
WARNING: AccuRev 4.x to 5.x metadata migration trial run completed without errors in X minutes. *** The AccuRev Server WILL NOT start after the migration trial run.
```

#### Explanation:

You have successfully completed a trial migration from AccuRev 4.x to 5.x, but you must analyze the results and re-run the migration “for real” in order for the AccuRev Server to start. You must now review the `dbupgrade_i18n_report.html` file for correctness (see the “[Messages from dbupgrade\\_i18n\\_report.html](#) on page 36”). Then, if all highlighted characters in `dbupgrade_i18n_report.html` are correct, proceed to perform the actual migration as described in [Performing the Actual Database Upgrade](#) on page 37. Test your installation. If you were doing the upgrade on a test machine, return to [Performing an Upgrade “In Place”](#) on page 19 to complete the upgrade on your production machine.

### Warning message example #4:

```
WARNING: Would change database encoding to UTF-8: cannot proceed any further without making changes to the database, stopping
WARNING: Would create a UTF-8 case-insensitive index: cannot proceed any further without a UTF-8 database, stopping
WARNING: AccuRev database upgrade trial run completed without errors in X minutes.
*** No changes were made to the database during the upgrade trial run.
```

#### Explanation:

You are performing a trial upgrade from 5.0.x/5.1 to 6.2, which adds internationalization (I18N) support. Everything up to the point where the database is switched to UTF-8 has completed successfully, but the actual switch cannot occur during a “trial” run. You must now review the `dbupgrade_i18n_report.html` file for correctness (see [Messages from dbupgrade\\_i18n\\_report.html](#) on page 36). Then, if all highlighted characters in `dbupgrade_i18n_report.html` are valid, proceed to perform the migration “for real” (see [Performing the Actual Database Upgrade](#) on page 37, and [Upgrading an AccuRev Server from 5.0.x](#) on page 20 or [Upgrading a Server from a 5.7 or 6.x Version](#) on page 18.)

## Fatal Messages

### Fatal message example #1:

```
FATAL: AccuRev 4.x to 5.x metadata migration completed with errors in X minutes. *** Errors were detected during the 4.x to 5.x metadata migration processing. See /path-to-/dbupgrade.log for details. The AccuRev Server WILL NOT start until the upgrade is successful. Please contact AccuRev Service for assistance.
```

```
FATAL: AccuRev database upgrade completed with errors in X minutes. *** Errors were detected during the database upgrade processing. See %s/%s for details. No changes were made to the database. Please contact AccuRev Service for assistance.
```

#### Explanation:

One or more errors have occurred which prevented the migration or upgrade from completing. Additional log entries with severity FATAL should be present in `dbupgrade.log` with the specific reasons for the errors.

### Fatal message example #2:

```
FATAL: File not found - /path-to-storage/depots/depot-name/table-name.ndb
```

#### Explanation:

You are migrating from 4.x to 6.2 and the 4.x `ndb` file in question cannot be found. If the file is part of a depot that is no longer active, you may want to first `rmdepot depot-name` in 4.x, then retry the migration.



### Fatal message example #3:

FATAL: Depot contains AccuWork issues, but the corresponding schema.xml definition could not be found or loaded

### Explanation:

The AccuWork `schema.xml` file is missing from the `<ac-storage>/depots/depot-name/di spatch/config` directory.

### Fatal message example #4:

FATAL: Database error: ...

FATAL: Retrieving list of depots from database: Database error: ...

FATAL: table 'X' rowcount mismatch: expected Y, got Z

FATAL: LOC width X not supported!

### Explanation:

If you receive any of these errors, contact Micro Focus SupportLine (<https://supportline.microfocus.com>).

## Messages from `dbupgrade_i18n_report.html`

**Note:** Store the `<ac-storage>/site/logs/dbupgrade_i18n_report.html` file in a safe place. It contains information that could assist AccuRev Support Services with troubleshooting any data migration or database upgrade issues.

The information in `dbupgrade_i18n_report.htm` contains the results of the UTF-8 conversion based on the code page that you specified. Open this report in a web browser and look for any highlighted characters -- these represent non-ASCII characters found during the conversion.

Some highlighted characters can be ignored. For example, accents and umlauts may have been introduced when adding a foreign document to the depot. Likewise, some highlighted characters may be simple non-ASCII punctuation characters like em dashes (“—”). However, if a highlighted character does not look valid, it probably needs to be corrected.

To research the origin of suspect entries, use the information in the report to find the characters in your existing, running AccuRev installation (4.x, 5.0.x, or 5.1):

1. Click on the triangular handle next to any highlighted entry to see where it is being referenced (depot, stream, etc.). For example, in the illustration below, clicking on the handle next to “Stream name” reveals that two non-ASCII characters appear in the stream name that begins “LINE tests bld”. Clicking on the handle for this entry narrows down the location to `depot_id 13` and `stream_id 2802`.

#### ▼ Stream name

#### ▼ LINE tests bld 1.7ý (RUN, 10-07-07)ý

depot\_id: 13, stream\_id: 2802, time: 1178784798

2. Use the displayed information (`depot_id`, `stream_id`, `issue_num`, etc.) to navigate to the suspect entry in your existing (4.9, 5.0.x, or 5.1) AccuRev UI.

- Compare the appearance of the suspect entry in the report against how it appears in your existing AccuRev installation.

Here are some general rules for interpreting these results:

- All highlighted characters are correct.** Your data will convert cleanly, and you can proceed to perform the actual upgrade without a trial run:

```
maintain dbupgrade -f -E CP1252 <db-admin-name>
```

(**Note:** Use the exact same maintain **dbupgrade** command on the replica servers, if any.)

- Some highlighted characters are incorrect.** Determine whether or not these characters are acceptable, or if you can fix them after the upgrade. For example, you might be able to rename a stream or a file. **Note:** Because of AccuRev's TimeSafe® feature, snapshots and time-based streams will preserve the pre-rename, incorrect information.) If in doubt about how to proceed, please contact Micro Focus SupportLine (<https://supportline.microfocus.com>).
- There are many incorrect highlighted characters and the problem seems to be consistent.** If you can identify a recurring, common problem, you probably need to use a different code page. For more information about code pages, start with [http://en.wikipedia.org/wiki/Character\\_encoding](http://en.wikipedia.org/wiki/Character_encoding).

## Performing the Actual Database Upgrade

Once you have fixed any issues reported by the "trial run" upgrade, you can perform the actual database upgrade by re-running the **maintain dbupgrade** command as described in the previous section, but responding **N** when prompted whether or not you wish to run in trial mode, and confirm your choice.

## Starting and Stopping AccuRev Servers

This section describes the procedures you can use to start and stop the AccuRev Server and the AccuRev Database Server.

### Starting and Stopping the AccuRev Server

Use the procedures below to start and stop the AccuRev Server.

#### Starting

| Platform   | Interface    | Start Procedure  |
|------------|--------------|--|
| Windows    | GUI          | Services window > Locate service, right-click, choose <b>Start Service</b> |
|            | Command line | <code>net start accurev</code>   |
| UNIX/Linux | Command line | <code>cd &lt;ac-install&gt;/bin<br/>./acsserverctl start</code>            |

#### Stopping

| Platform   | Interface    | Stop Procedure  |
|------------|--------------|---|
| Windows    | GUI          | Services window > Locate service, right-click, choose <b>Stop Service</b> |
|            | Command line | <code>net stop accurev</code>   |
| UNIX/Linux | Command line | <code>cd &lt;ac-install&gt;/bin<br/>./acsserverctl stop</code>            |

When you start the AccuRev Server, the database is automatically started first.

## Starting and Stopping the AccuRev Database Server

Use the procedures below to start and stop the AccuRev Database Server.

### Starting

| Platform   | Interface    | Start Procedure  |
|------------|--------------|--|
| Windows    | GUI          | Services window > Locate service, right-click, choose <b>Start Service</b> |
|            | Command line | <code>net start "accurev db server"</code>                                 |
| UNIX/Linux | Command line | <code>cd &lt;ac-install&gt;/bin<br/>./acserverctl dbstart</code>           |

### Stopping

| Platform   | Interface    | Stop Procedure  |
|------------|--------------|---|
| Windows    | GUI          | Services window > Locate service, right-click, choose <b>Stop Service</b> |
|            | Command line | <code>net stop "accurev db server"</code>                                 |
| UNIX/Linux | Command line | <code>cd &lt;ac-install&gt;/bin<br/>./acserverctl dbstop</code>           |

When you stop the AccuRev Database, the AccuRev Server is automatically shut down first.

## Starting and Stopping the AccuRev Tomcat Server and Mosquitto MQTT Message Broker

Use the procedures below to start and stop the AccuRev Tomcat Server and Mosquitto MQTT Message Broker.

### Starting

| Platform   | Interface    | Start Procedure  |
|------------|--------------|--|
| Windows    | GUI          | Services window > Locate service, right-click, choose <b>Start Service</b>   |
|            | Command line | <code>net start AccuRevTomcat<br/>net start "AccuRev Mosquitto"</code>   |
| UNIX/Linux | Command line | For Tomcat:<br><code>&lt;ac-install&gt;/WebUI/tomcat/bin/startup.sh &gt;&gt; &lt;ac-install&gt;/storage/slice/logs/accurev_tomcat_startstop.log 2&gt;&amp;1 &amp;</code><br><br>For Mosquitto:<br><code>cd &lt;ac-install&gt;/mosquitto<br/>./mosquitto --daemon -c ./mosquitto.conf &gt;&gt; &lt;ac-install&gt;/storage/slice/logs/mosquitto.log 2&gt;&amp;1 &amp;</code> |

## Stopping

| Platform   | Interface    | Stop Procedure   |
|------------|--------------|--|
| Windows    | GUI          | Services window > Locate service, right-click, choose <b>Stop Service</b>  |
|            | Command line | <pre>net stop AccuRevTomcat net stop "AccuRev Mosquito"</pre>  |
| UNIX/Linux | Command line | For Tomcat:<br><pre>&lt;ac-install&gt;/WebUI/tomcat/bin/shutdown.sh &gt;&gt; &lt;ac- install&gt;/storage/site/logs/ accurev_tomcat_startstop.log 2&gt;&amp;1 &amp;</pre><br>For Mosquito:<br><pre>kill -x mosquito</pre> |

## Summary of Start and Stop Operations

In summary:

- Starting the AccuRev Server will automatically start the AccuRev Database if it is not already running.
- Stopping the AccuRev Server will NOT automatically stop the AccuRev Database.
- Starting the AccuRev Database will NOT automatically start the AccuRev Server.
- Stopping the AccuRev Database will also stop the AccuRev Server, but only if you say "Y" to the prompt. Otherwise, neither will be stopped.

See "Controlling Server Operation" in the AccuRev *Administrator's Guide* for more information, and for setting up your system to automatically start the AccuRev processes at boot time.

## Platform Support Notes

The following sections contain important information about installing AccuRev software on specific hardware/software platforms.

### Platform Support Matrix

For the most up-to-date list of supported platforms, go to <http://supportline.microfocus.com/supportresources/AccurevSupportMatrix.aspx>.

### Important Notes:

1. The Platform Support Matrix lists the platforms that have been tested for the AccuRev 7.2 server and client. We will investigate and attempt to address issues reported on other platforms, but we reserve the right to request that you reproduce the problem on a supported platform.
2. We will investigate and attempt to address issues reported on virtualization platforms not supported by AccuRev, but we reserve the right to request that you reproduce the problem on one of the supported OS platforms listed in the Platform Support Matrix, running in a non-virtualization environment.

## Java Compatibility

AccuRev 7.2 is compatible with the Java Runtime Environment (JRE), Versions 1.8.0\_162 and higher.

## (UNIX/Linux only) Workaround for Java Runtime Library Problems

The AccuRev Installation Wizard and the AccuRev GUI fail on some UNIX/Linux platforms because of Java library problems. Use this procedure to work around these problems:

1. Run the Installation Wizard with environment variable LIBXCB\_ALLOW\_SLOPPY\_LOCK set to the value 1.
2. Fix the runtime library file in the new AccuRev installation area:

```
> cd ac-install/jre/lib/i386/xawt
> sed -i 's/XINERAMA/FAKEEXTN/g' ./libmawt.so
```

## Linux

- PostgreSQL may fail to function properly when SELinux mode is set to “Enforcing”. See [http://docs.fedoraproject.org/en-US/Fedora/13/html/SELinux\\_FAQ/#id2963608](http://docs.fedoraproject.org/en-US/Fedora/13/html/SELinux_FAQ/#id2963608) for more information. To find out the current SELinux mode run **getenforce** (as **root**). To set SELinux mode to “Permissive”, run **setenforce PermissiveEdit**.
- Linux systems require **glibc** version 2.4 or higher. To determine your **glibc** version, run **rpm -qi glibc** in a command shell. Ubuntu systems require **libc6-i386**.
- The AccuRev Installation program and the AccuRev GUI fail on some older UNIX/Linux platforms because of Java library problems. Use this procedure to work around these problems:
  - Set the environment variable LIBXCB\_ALLOW\_SLOPPY\_LOCK to the value 1.
  - Run the installation program.
  - Fix the runtime library file in the new AccuRev installation area:

```
> cd <ac-install>/jre/lib/i386/xawt
> sed -i 's/XINERAMA/FAKEEXTN/g' ./libmawt.so
```

## AIX

- Only the AccuRev client software is supported on this platform.
- You cannot upgrade the AccuRev Client using the **Help > Upgrade Client** menu choice.
- If you use the console method to upgrade your AccuRev Client, the response file is not read; you must provide values for host, port, and path when prompted.
- The following shared libraries must be accessible, both by the AccuRev Installation Wizard and by the installed AccuRev executables. The pathnames below show typical locations for these shared libraries.

```
/usr/freeware/lib/libcrypto.a
/usr/freeware/lib/libintl.a
/usr/lib/libc.a
/usr/lib/libcrypt.a
/usr/lib/libdl.a
/usr/lib/libpthread.a
/usr/lib/libpthreads.a
```

**Note:** It is recommended that the LIBPATH environment variable *not* be set, as it can interfere with the loading of libraries from `/opt/accurev/bin`.

The libraries above are typically part of the following AIX filesets and/or open-source RPM packages:

- bos.loc.utf.EN\_US (or any other non-EN\_US UTF locales)
- bos.rte.bind\_cmds
- bos.rte.libc
- bos.rte.libpthreads
- bos.rte.security
- openssl-0.9.7X
- gettext-0.17-1 (or later)
- AIX 5.3: fix pack 5300-07 or newer required
- AIX 6.1: fix pack 6100-GOLD or newer required
- AIX 7.1: fix pack 7100-GOLD or newer required
- The installer mistakenly warns you that you have not chosen the bundled JRE. Complete the installation, then change this setting in `/opt/accurev/bin/acgui.lax`:

```
lax.nl.current.vm=../jre/bin/java
```

## Solaris

- The AccuRev Server and Client are supported on Solaris x64.
- If you upgrade the AccuRev Client using the console mode, you are not prompted to provide values for host, port, and path. AccuRev uses values from your existing AccuRev Client installation to perform the upgrade.
- The following shared library must be accessible, both by the AccuRev Installation Wizard and by the installed AccuRev executables. The pathname below shows the typical location for this shared library.

```
/usr/sfw/lib/libgcc_s.so.1
```

**Note:** It is recommended that the LD\_LIBRARY\_PATH environment variable *not* be set, as it can interfere with the loading of libraries from `<ac-install>/bin`.

The library above is typically part of the following SUN package:

- SUNWgccruntime

## Restrictions on the Use of AccuRev Clients in Solaris Zones

The following restrictions apply to the use of AccuRev clients in Solaris zones:

- The AccuRev Server should be run from a global zone. If you want to run an AccuRev Server from a non-global zone, you should give that zone a private disk volume and not use a loopback mount to the global zone for any of the AccuRev Server metadata or storage files.
- Workspaces can only be created on zones with private host names.
- Workspaces in the non-global zone cannot be used from the global zone.

- Workspaces on NFS mounts (not recommended) must be NFS-mounted directly from the non-global zone, not through a loopback mount in the non-global zone to an NFS mount in the global zone.
- Solaris requires operating system patches, as described on the Oracle Technology Network (<http://www.oracle.com/technetwork/systems/patches/index.html>).

## Windows

- Disable anti-virus checking for the `<ac-storage>` directory and all directories beneath it to avoid performance problems associated with anti-virus checks.

## Mac OS X

- AccuRev Release 7.2 supports only the AccuRev client software on the Mac OS X platform.
- The following is a recommended method for getting all required executables into the PATH for Mac OS X:

Create the following three files using "sudo":

```
sudo echo "/Applications/AccuRev/bin" > /etc/paths.d/AccuRev
sudo echo "/Applications/AccuRev/bin/acdiffgui.app/Contents/MacOS" >
/etc/paths.d/Acdiffgui
sudo echo "/Applications/AccuRev/bin/acgui.app/Contents/MacOS" >
/etc/paths.d/Acgui
```

- To enable the AccuRev **diff** GUI tool (`acdiffgui`) to work stand-alone as well as from an IDE integration such as Eclipse, do the following:

1. Make a backup copy of `acdiffgui`:

```
cd /Applications/AccuRev/bin/acdiffgui.app/Contents/MacOS
mv acdiffgui acdiffgui.orig
```

2. Create a new `acdiffgui` file with the following content:

```
#!/usr/bin/perl
my $acbin = '/Applications/AccuRev/bin';
my @jars = qw(oro.jar xercesImpl.jar xml-api.jar fw.jar werken.opt.jar diff.jar
accurev-common.jar);
my $cp = join(':', map {"$acbin/$_"} @jars);
my @args = ('java', "-Duser.dir=$acbin", '-Xms32M', '-Xmx512M', '-classpath', $cp,
'diff.DiffApp', @ARGV);
system(@args);
```

3. Create the following link:

```
ln -s /Applications/AccuRev/bin/acdiffgui.app/Contents/MacOS/acdiffgui
/Applications/AccuRev/bin/acdiffgui
```

4. Close any shells.
5. Open a new shell.

Running `acdiffgui` should now bring up the AccuRev graphical **diff** tool, and it should also work from within any integrated IDE.

## Uninstalling AccuRev

On Windows, we recommend that you run `<ac-install>\bin\Uninstall\erData\Uninstall\AccuRev.exe` to ensure that the AccuRev services and registry entries are removed cleanly. Back up and remove any folders and files left under `<ac-install>`.

On UNIX/Linux, simply halt and remove any AccuRev services, and back up and remove any folders and files left under `<ac-install>`.

**Note:** If you are planning to upgrade either your AccuRev client or your AccuRev server, we recommend that you *not* uninstall AccuRev. Instead, just install over the existing AccuRev content.





# AccuRev 7.2 Release Notes

This chapter describes changes and other information related to AccuRev 7.2.

## Notes:

- To ensure AccuRev's successful installation and optimal performance, install all applicable updates for your operating system before installing or upgrading AccuRev.
- If you are upgrading from an earlier release, we recommend that you install 7.2 over the existing AccuRev content.
- AccuRev clients from releases 6.2.0 through 7.1 can be used with the 7.2 server, but *only 7.2 clients can be used to modify schemas.*

## Discontinued Platforms

Beginning with AccuRev Release 7.2, the Microsoft Windows 8 platform is no longer supported. This is consistent with our directive to install all applicable updates to your operating system before installing AccuRev. Applying all updates to a Windows 8 platform upgrades it to a Windows 8.1 platform.

Linux Fedora 25 is also no longer supported. Packages in the Fedora 25 repositories no longer receive security, bugfix, or enhancement updates.

## Changes in AccuRev Release 7.2

AccuRev Release 7.2 includes the following new features and bug fixes.

**Note:** In cases where an issue is identified with two numbers, such as 10721 (1098410), the first number is the issue number in the AccuWork issue tracking system, and the second, in parentheses, is the issue number in the SupportLine system used by Customer Care.

### **16552 (1103468) - Annotate doesn't work if file has ever been binary**

The **annotate** command now works properly on a text or ptext file whose file type was binary at some time in the past, as long as the file does not contain any binary data.

### **30839 (1103465) - In change palette, hitting Escape in the Promote dialog promotes file**

Hitting the Escape key in the Promote dialog now closes the dialog and aborts the **Promote** operation.

### **34233, 49372, 49373 (1094833, 1111536) - RFE - AccuWork field type to calculate durations**

Release 7.2 provides a new type of schema field called "calculated timespan", which dynamically calculates the time difference either between two timestamp fields or between a timestamp field and the current time. Such a field can be viewed and used in issues, active issues tables, issue queries and results, validation conditions and actions, and workflow conditions.

See [Calculated Timespan Schema Field Type](#) on page 1 for further information on the calculated timespan field type.

**Note:** The expansion of the existing Timespan field type to support calculated timespans imposes the following constraint: **Pre-7.2 AccuRev clients cannot be used to make schema changes; a 7.2 client must be used in order to modify a schema.**

### **34448 (1095054) - Change Palette does not show twins**

A new element status called “(subtwin)” has been defined to indicate that one of the element’s parent directories is a (twin). See [\(subtwin\) Element Status](#) on page 2 for more information.


### **36022 (1096859) - Cursor entry point goes to second line when clicking into rich text field**

This problem does not occur in Release 7.2. The rich text field control has been upgraded since this defect was reported.

### **37284 (1099323) - Running mkws on replica does not produce error for non-replicated depot**

Prior to 7.2, the command "accurev mkws" on a replica machine would succeed even if the specified backing stream was in a non-replicated depot. (The workspace was not usable until the depot was replicated.) In 7.2, such a mkws command fails with an error message: "Unknown stream or ver spec".

### **37579 (1100233) - Web Interface: Clicking clock button next to text field label does nothing**

The  **Add Timestamped Text** control is applicable only to log fields, not to text fields. The button has been removed from issue text fields in the WebUI.

### **42485 (1105845) - AccuWork: On transition, "Required Fields" popup doesn't fill in AssignedTo field in main Issue panel**

In 7.0 and earlier releases, as the user entered values in AccuWork’s Required Fields dialog, those values were reflected in the issue form behind the dialog. Due to a defect, however, if the required field was a User-type field, the value that was set in the Required Fields dialog was *not* shown in the issue form until the Save button was pressed.

This issue is not applicable to 7.0.1 and later releases. Now, values set in the Required Fields dialog are not shown in the issue form until the clicks the Save button in the dialog. The Required Fields dialog displays this text: "Please enter a value for each required field below. The values will be displayed in the issue form when you click Save."

### **46621 (611819, 1098982) - GUI: AccuRev is unable to update the acclient.cnf file in the AccuRev bin folder**

Beginning with Release 7.1, the AccuRev install process places a template for acclient.cnf into the <ac-install>/bin folder, and the AccuRev GUI then copies that file into each user’s %ACCUREV\_HOME%/.accurev (or \$HOME/.accurev) folder. Placing the file in this folder enables modifications by non-admin users.

### **46827 (633941) - GUI should run Sync Stream wizard after reparenting a time-based stream**

AccuRev now runs the Sync Stream wizard whenever a time-based stream is reparented, regardless of whether the time basis was removed or retained.

### **47475 - WebUI doesn't display issue field styling that is configured in the GUI**

AccuRev 7.0.1 introduced schema field styling in the GUI. Individual fields can be styled in the schema editor. That styling is now visible in the WebUI.

### **47777 (633890) - Issue history doesn't track changing a field's value to none-selected or empty string**

The issue history display now includes transactions in which a field's value was changed to be blank (formerly <none selected>).

### **48002 (633936) - WebUI: Issue history does not display old values of fields**

The issue history display in the WebUI now displays both the old and new values of fields that have changed.

### **48333 (633939) - setValue in WebUI workflow does not work correctly when switched to English locale**

AccuRev used to store locale-specific strings for "<none selected>" in workflows, schemas, and issues, and this caused problems for users who worked in different locales. In Release 7.2, locale-specific "<none selected>" strings have been replaced with a blank value (i.e., empty string). Please see Issue [49014 - <none selected> replaced by blank value in GUI and WebUI comboboxes](#).

### **48349 (633937) - GUI: Issue history does not display if an issue field contains more than 84 multibyte Unicode characters**

Issue history is now properly displayed even when a field contains more than 84 multibyte Unicode characters.

### **48420 (1112124) - AccuRev server dumps core when server\_master\_trig calls the setproperty command**

There was an intermittent crash when broadcasting Mosquitto/MQTT notification messages to subscribers. This defect has been fixed in 7.2.

### **48442 - Query results exported from the WebUI in XML format are not properly formatted**

The WebUI now converts spaces in field labels to underscores when it is exporting in XML format.

### **48534 (633935) - Use StarTeam diff tool to identify conflict if StarTeam merge tool will be used to resolve merge**

In earlier versions of AccuRev, when versions being merged contained changes in adjacent lines of text, GNU diff identified this as a conflict while StarTeam Diff did not, and this caused the StarTeam merge tool to be invoked when there were actually no conflicts to be resolved. AccuRev 7.2 avoids this problem by using the StarTeam Diff tool to identify conflict whenever the user preference specifies that StarTeam be used as the merge tool.

In addition, 7.2 defines a new preference called "Auto-Keep Trivial Merges". Setting this preference means that, for all merge operations, an automatic merge will be done (i.e., the merge tool's GUI will not be displayed) if there are only non-conflicting changes between the two versions being merged. Clearing the preference means that the GUI will ask the user at the beginning of each bulk merge operation if trivial merges should be automatically resolved and kept.

### **48562 (633940) - GUI: Edit Query displays usernames instead of display names in User field dropdown**

The Edit Query dialog now correctly uses the configured Display Property when displaying a User-type field and its dropdown. The same is true for the Query Parameters dialog (which allows the user to specify values for dynamic query parameters).

### **48563 (633938) - Error dialog is displayed repeatedly after opening version browser**

This problem occurred because the selected number of transactions to display were all each transactions, so there was nothing to display in the version browser. This defect has been fixed by excluding from the version count those operations that have no corresponding version (each, defcomp).

### **48818 (633946) - Remove client backward compatibility**

As of Release 7.2, the accurev.exe client cannot communicate with older AccuRev servers. Old clients can talk to new servers, but new clients cannot talk to old servers.

### **48828 (633945) - RFE: Allow the user to switch servers instead of upgrading a client**

The Upgrade Client dialog now has three buttons: Download, Change Servers, and Exit GUI. As an alternative to clicking Download to upgrade the AccuRev GUI, the user can now click Change Servers to connect to a different AccuRev server (one that is compatible with the GUI).

### **48991 (633942) - null message in sync stream wizard failure panel**

This defect has been fixed; the null message no longer appears.

### **48992 (633948) - Sync Stream wizard should not quit on encoding error**

Failure during a trivial merge (for example, due to an encoding problem) no longer causes termination of the Sync Stream wizard. Instead, the file whose trivial merge failed is queued up to be displayed to the user during the manual merge resolution phase after all trivial merges have completed.

### **48993 (633944) - Resolving several backing overlaps in the workspace leads to unaffiliated changes**

AccuRev's merge algorithm has been modified to avoid creating unaffiliated changes - it now identifies all of the issues that are being merged and automatically assigns the result to the appropriate issues.

### **49014 - <none selected> replaced by blank value in GUI and WebUI comboboxes**

In both the GUI and the WebUI, the locale-specific "<none selected>" string in comboboxes has been replaced with a selectable blank value. The following areas are affected:

- AccuWork in the GUI and the WebUI - issue fields
- Schema Editor in the GUI - validation conditions and actions; change package triggers
- Workflow editing in the WebUI - workflow conditions, stage conditions and actions, transition conditions and actions
- Workflow execution in the GUI and the WebUI

**Note:** In the WebUI, because of the typeahead filter feature for User-type fields, one must use a different technique to set a User field to blank: Simply click on the grey 'x' to the left of the triangle that opens the dropdown.



AccuRev Release 7.2 correctly handles newly created issues and workflows as well as existing issues and workflows that have locale-specific "none selected" values stored in them. The locale-specific "none selected" values are treated like the blank value, and are written out as the blank value if the issue/workflow is saved again.

### **49146 (1110357) - RFE: A way to switch between "diff against backed" and "diff against basis" in Outgoing mode**

In Outgoing mode of the File Browser, a new dropdown menu called **Diff Against** allows you to choose which version you want to diff your changes against in the Diff pane. The choices are: Basis (default), Backed, and Most Recent.

For more information, see [“Diff Against” Dropdown Menu in Outgoing Mode](#) on page 3.

### **49156 - modifyIssue XML command cannot set a field to [no value] if replaceAll="false"**

When an XML command (newIssue, modifyIssue, applyTransition) is issued with **replaceAll="false"**:

- If a field is omitted from the XML, its value does not change.
- If a field is included in the XML without a value, its value *is now cleared*. For example, the following command will clear the value of the targetRelease field:

```
<modifyIssue issueDB="test" replaceAll="false">
<issue>
<issueNum fid="1">36322</issueNum>
</issue>
<values>
<status fid="3">Completed</status>
<assignedTo fid="14">jthomas</assignedTo>
<targetRelease fid="21"></targetRelease>
</values>
</modifyIssue>
```

**Note:** With `replaceAll="false"`, the presence of a field without a value in the XML was effectively a no-op prior to 7.2; in 7.2 it has the effect of clearing the field's value. Customers are advised to review and adjust existing XML command files to account for this change.

### **49213 - RFE: Merge and Patch should allow multiple issues**

Multiple issues can now be merged or patched at the same time without requiring a tracking issue. AccuRev identifies which issues are being merged or patched and automatically assigns new file versions to variants of the appropriate issue(s).

Elimination of the tracking issue prevents the creation of artificial dependencies between the issues that are concurrently merged/patched.

### **49214 - Upgrade JRE to v8 update 162**

In this release, the Java Runtime Environment has been upgraded to 1.8.0\_162.

### **49255 (632069) - RFE: Support csv format when -ft (header) option for hist command is specified**

The **hist** CLI command supports a new **-fc** option (applicable only with **-ft**) to specify that header info should be returned in csv (comma-separated values) format.

### **49263 (632070) - GUI: Edit workspace appears to hang**

The **Edit workspace** dialog now appears more quickly, whether it's invoked from the Stream Browser or from the **View > Workspaces** tab.

### **49264 (632071) - RFE: Workspace update in GUI should also merge (member)(overlap) files**

The **Update** operation has been expanded to support merging of files with (member)(overlap) status after the update has completed. See [Update Workspace and \(member\)\(overlap\) Files](#) on page 2 for more information.

### **49266 (632072) - When reparenting in Stream Browser, wrong stream is used as parent when user selects desired parent stream from search results table**

This problem no longer occurs in Release 7.2.

### **49310 (1105245) - WebUI bulk update cannot update multi-line Text fields**

Bulk update in the WebUI now works on multi-line Text fields. The text specified in the bulk update is appended to existing text in the field.

### **49337 (633949) - RFE: Merge should have the ability to select both changes for conflicts, i.e., theirs-then-mine, mine-then-theirs**

Pre-7.2 releases did support selecting both changes for conflicts in the Merge tool, but Release 7.2 provides a more convenient, intuitive method. Prior to 7.2, you had to hold down the **Ctrl** key while you clicked on conflict-resolution buttons (i.e., *Theirs*, *Common Ancestor*, or *Mine*) in the desired sequence. In 7.2, you click that same sequence of conflict-resolution buttons *without* holding down the **Ctrl** key. See [Merge GUI: Selecting Multiple Sources](#) on page 3 for more information.

### **49866 - Misspelled code review preference "CodeReviewEanbled"**

When code review functionality is invoked in the GUI, AccuRev corrects the misspelling by changing "CodeReviewEanbled" to "CodeReviewEnabled" in the user's preferences.xml file.

### **49997 - Upgrade the Tomcat used by the WebUI**

The AccuRev 7.2 WebUI is installed with and runs on Tomcat 8.5.29.

### **50283 - AccuRev client should ignore ACCUREV\_SERVER environment variable if no port number is specified**

The AccuRev client now ignores the ACCUREV\_SERVER environment variable if its value does not contain a colon (':'); instead, the client uses the server specified in the first line of the user's acclient.cnf file.

### **50298 (1113690) - (stranded) status is not displayed in GUI**

The GUI now correctly displays stranded elements in Outgoing mode when the Stranded filter is enabled.

## **50310 (634022) - Incorrect element status in the workspace after promoting a twin element that was resolved by renaming and defuncting the workspace version of the element**

Release 7.2 reports the correct element status in the workspace. While recursing upward through the stream hierarchy to find the element by name, if the element was renamed and promoted out of the workspace, AccuRev now uses the Promote transaction instead of the Update transaction to correctly identify the element that currently owns that name.

## **Corrections and Changes to the Documentation**

Please note the following corrections and changes to the AccuRev 7.2 documentation:

### **41582 (1111389) - Update doc for addmember, rmmember, and server\_admin\_trig trigger**

The Help entries for CLI commands *addmember* and *rmmember* have been updated to describe how the commands can now modify multiple groups. In the description of the parameters file for the *server\_admin\_trig* trigger, the <group> XML element has been changed to <groups>. (See *Format of the “server\_admin\_trig” Trigger Parameters File* in the *AccuRev Triggers* chapter of the *Administrator’s Guide*.)

### **49568 - ACCUREV\_BIN and ACCUREV\_SERVER environment variables**

The documentation of the ACCUREV\_BIN and ACCUREV\_SERVER environment variables has been updated on the *ENV\_VARS* page of the *AccuRev® Command-Line Reference* chapter in the *7.2 CLI User’s Guide*.

### **49662 - Negative numbers are not supported in editable Timespan issue fields**

The Help text now states that only non-negative, decimal values are permitted in editable Timespan fields.

### **49904 - Move Admin GUI documentation into Admin Guide**

For documentation about the Admin GUI, see the section *Admin Command Permissions GUI* in the chapter *AccuRev Security Overview* of the *7.2 Administrator’s Guide*.

## **Known Issues**

This section describes known issues in AccuRev and in the AccuRev Web UI.

### **AccuRev Git Client is incompatible with some recent Git releases**

A defect/regression that was introduced in Git version 2.15 results in merge commits being skipped during a push operation. Because of this, the AccuRev Git Client is compatible with Git 2.13 and 2.14, but incompatible with Git 2.15.x, 2.16.x, and 2.17.0. A fix has been submitted to the Git community and will be released in an upcoming Git patch. Please contact Customer Care for the most up-to-date information about Git versions that are compatible with the AccuRev Git Client.

### **AccuRev Git Client is incompatible with pre-10.13 versions of macOS**

The AccuRev Git Client supports macOS High Sierra 10.13 and higher.

### **Calculated timespan fields should not be synced**

Because the value of calculated timespan fields can be fluid, calculated timespan fields should not be used with AccuSync, Micro Focus Connect, and other synchronization products. Please see the notes in the section on *Calculated Timespan Schema Field Type* on page 1.



## **Failure to update Linux PATH with the AccuRev binaries directory**

The installer tries to update the PATH environment variable on Linux systems by appending to shell startup files. It uses the SHELL environment variable to determine which startup files to modify. Often it will modify .profile, which is used by Bash and sh.

However, if the user is running Bash and has created a .bash\_profile script, the .profile is never read. Also, if the user has no SHELL environment variable set, or if the setting is blank, the installer will not know which shell scripts to modify. Both of these situations will result in the PATH not being modified to include the AccuRev bin directory.

*Workaround:* The user must manually add the AccuRev bin directory to PATH.

# AccuRev 7.1 Release Notes

This chapter describes changes and other information related to AccuRev 7.1.

## Notes:

- To ensure AccuRev’s successful installation and optimal performance, install all applicable updates for your operating system before installing or upgrading AccuRev.
- If you are upgrading from an earlier release, we recommend that you install 7.1 over the existing AccuRev content.

## Deprecated Platforms

No platforms have been deprecated in AccuRev 7.1.

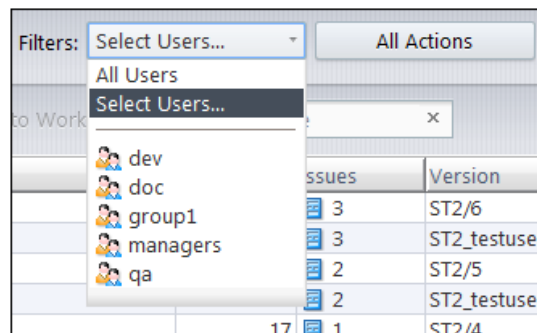
## What’s New in AccuRev Release 7.1

Highlights of the new developments in AccuRev 7.1 are captured here.

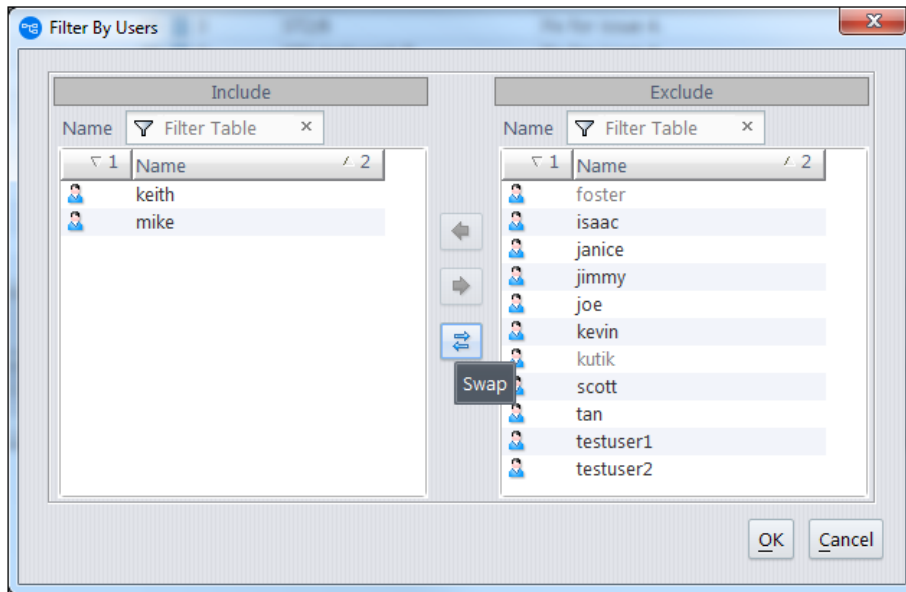
### Enhanced Filtering in the History Browser

AccuRev 7.1 offers enhanced filtering capabilities in the History Browser to enable you to hone in on the transaction information that is of interest to you. In previous releases of AccuRev, the History Browser’s table of transactions could be filtered to display only the transactions performed by a specific user. AccuRev 7.1 expands upon that, providing filtering by users, groups, and actions.

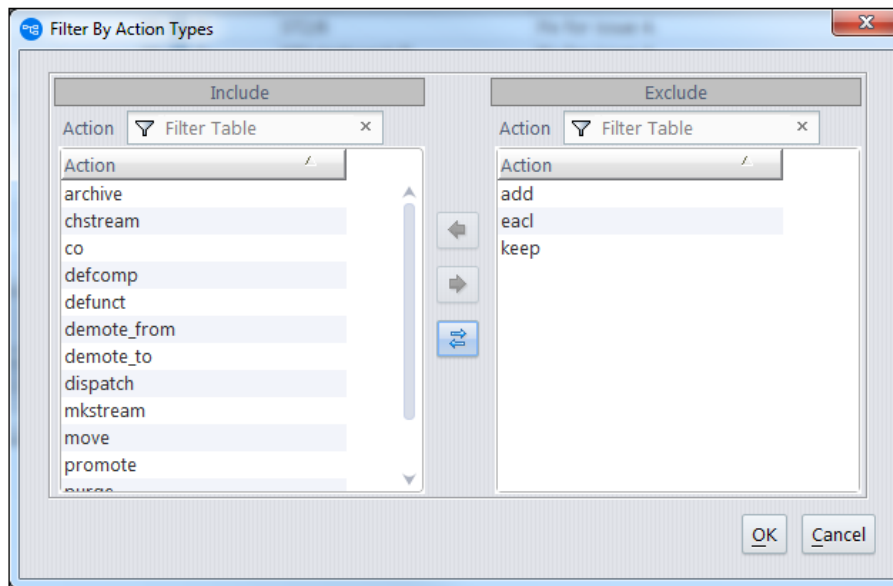
In the Users filter, you can now elect either to see transactions by all users or to filter by users or groups.



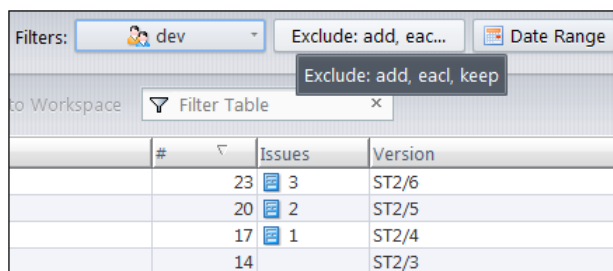
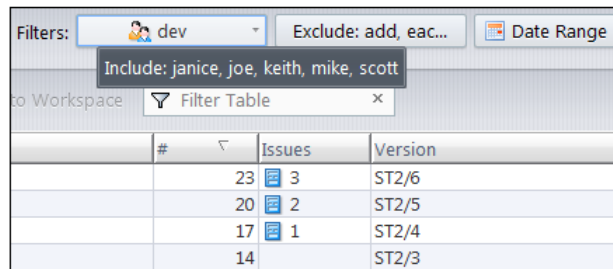
AccuRev groups are displayed at the bottom of the dropdown menu. You can select any one of the groups in order to see what transactions were executed by members of that group. If you choose “Select Users...” instead, a dialog will appear and allow you to divide the set of AccuRev users into an Included list (the users whose transactions will be displayed in the History Browser) and an Excluded list (the users whose transactions will be hidden from view). Left- and right-arrows move selected users from one table to the other, and the Swap button performs a quick exchange of the two tables’ contents.



The new Actions filter in the History Browser allows you to select what types of actions you want to see listed in the transactions table. Again, you use the arrow buttons to divide the set of action types into an Included list and an Excluded list and then click on the OK button.

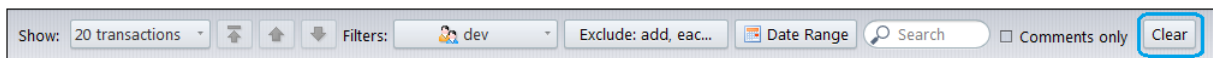


The tooltips for the Users and Actions filters identify how the history display is currently being filtered. For example:



As shown in the examples above, the Users and Actions filters can be used in conjunction to focus on select actions committed by a specific set of users.

A new Clear button resets all the filters located to the left of the button back to their default state:

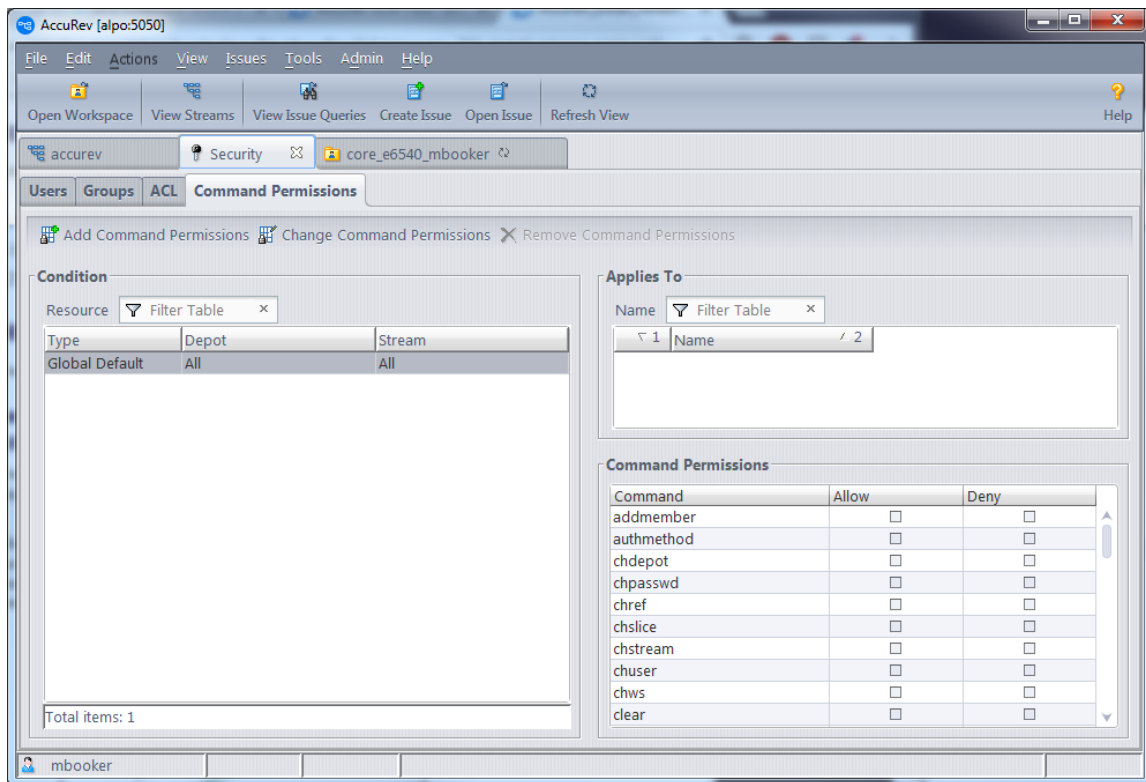


**Note:** The Active Transactions default group in the Stream Browser no longer contains a Users filter. Instead, you can filter active transactions by user via the advanced filters now available in the Active Transactions tab.

## Admin Command Permissions GUI

A new graphical user interface has been implemented to enable the AccuRev administrator to configure which users are allowed to execute a variety of administrative level commands. Previously, the way to do this was to write perl script in the `server_admin_trig.bat` or `server_admin_trig.pl` files installed in the `<ac-install>/storage/site_slice/triggers` directory.

Here is a look at the new GUI:



This configuration page is accessible from the “Admin” menu underneath the “Security” option. The “Global Default” Condition allows you to configure admin command permissions for the entire site. Command permissions can apply to an individual user or to a specific group of users. You can also apply permissions broadly to the two built-in groups:

- anyuser - All users without a password
- authuser - All users with a password

In the case that permissions have been configured for both a user directly and a group that the user is a member of, the permission setting closest to the user is the one that applies. For example, if a user is a member of the “qa” group and the “qa” group is denied access to the “chstream” command, but the user is specifically configured to be allowed permission to the “chstream” command, the user’s own permission is the one that applies.

## Configuring a Superuser

In order to set or remove admin command permissions, you must either be a superuser or have been granted explicit “allow” permission for the “setcmdacl” and “rmcmdacl” commands. To designate a user as the superuser, the AccuRev administrator must use the maintain utility:

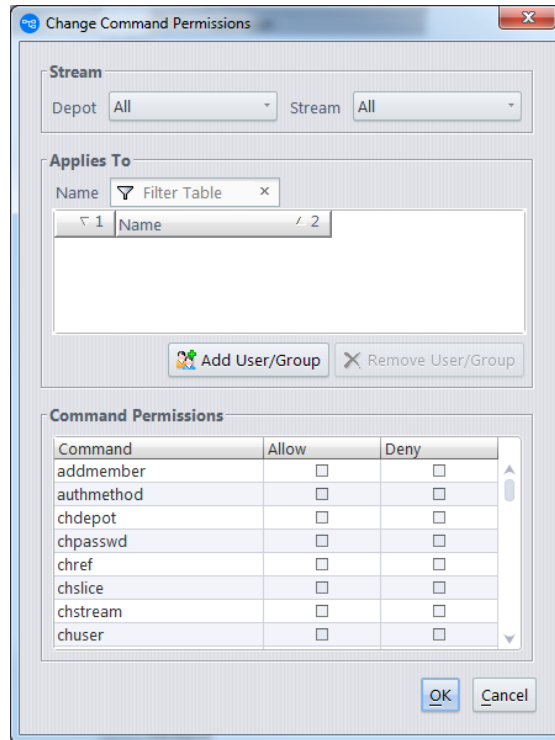
```
maintain su -a <username>
```

## Changing Command Permissions

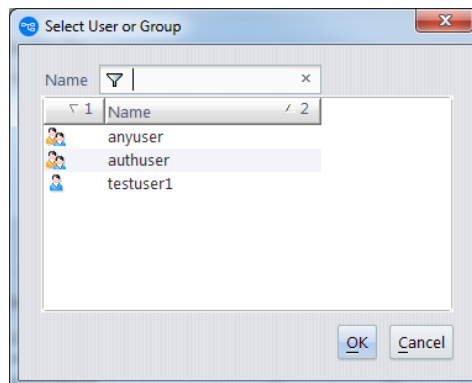
To edit command permissions, you must either select one of the existing conditions that you want to edit or add a new condition. The conditions are either the site-wide “Global Default” command permissions or command permissions set on a specific stream. Only commands that apply to a stream or stream hierarchy

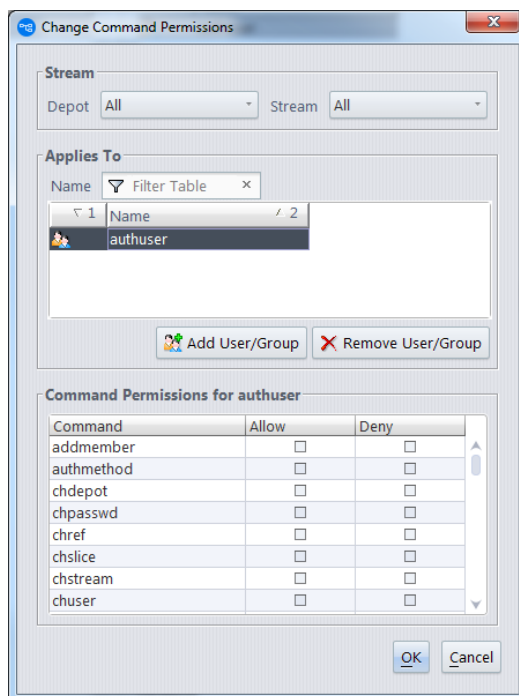
can be configured at the stream level. Examples of commands that are configurable by stream are: setting stream properties, mkstream, and chstream.

Either highlight the condition you want to edit and click the “Change Command Permissions” button, double-click on the condition, or right-click on the condition and choose the “Change Command Permissions” context menu option. The following dialog will appear:

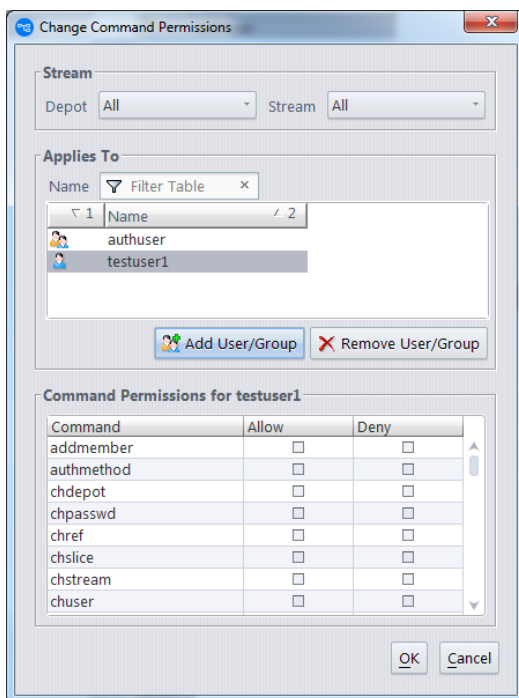


Now you need to add the user or group whose command permissions you want to configure. Command permissions are configured for one single user or one specific group of users at a time. This is similar to how Windows file permissions can be configured. You can add multiple users to the “Applies To” section of the dialog, but the “Command Permissions” that you configure apply only to the currently highlighted user or group:

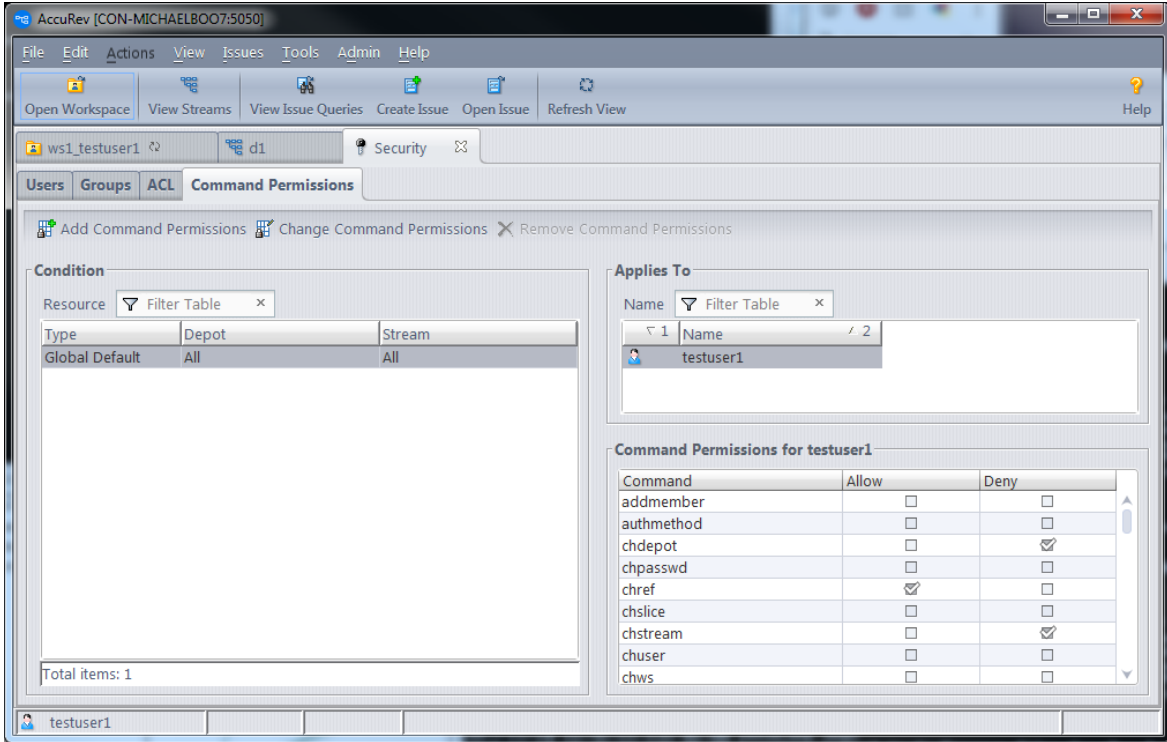




Notice that the title of the “Command Permissions” section identifies the user or group whose permissions are being configured.



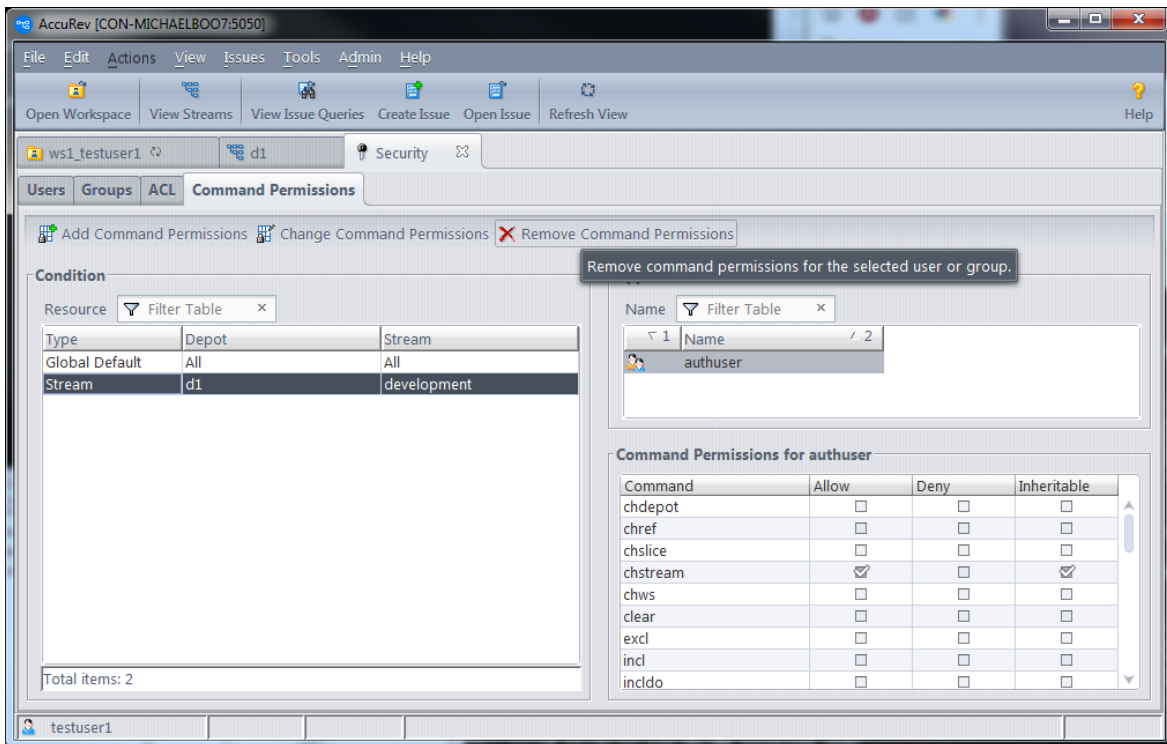
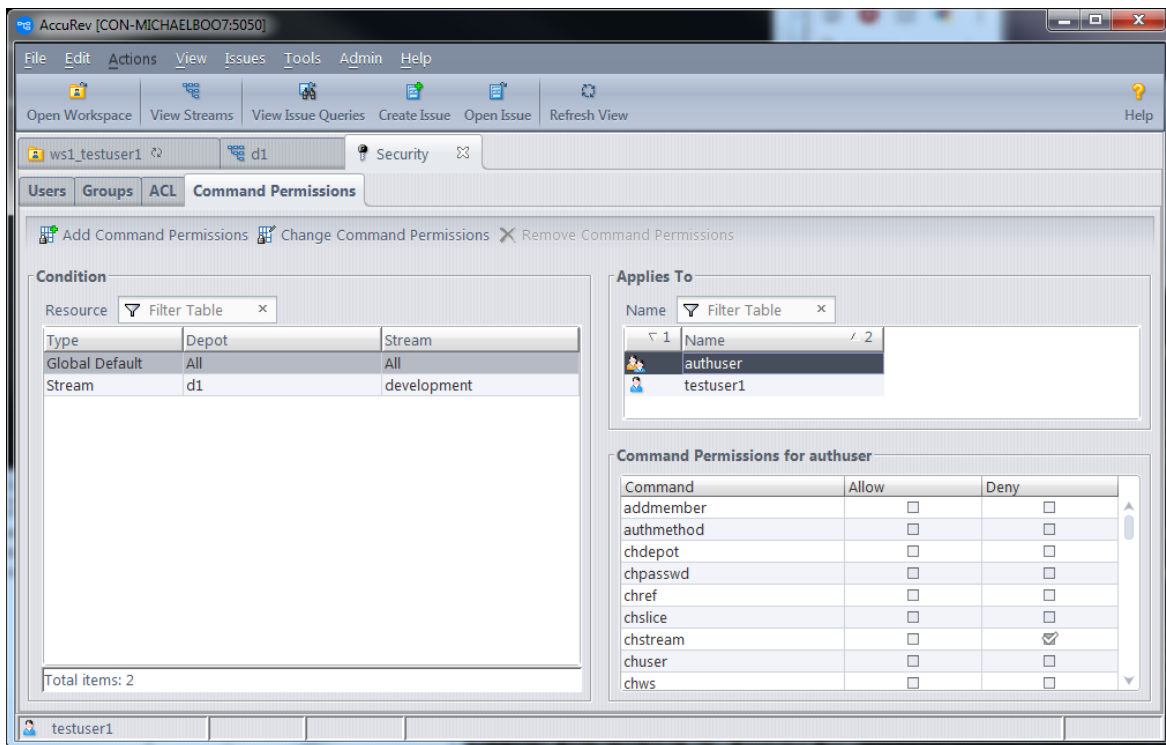
If you add testuser1 to the Applies To section, you can see that the command permissions for “testuser1” can also be configured now. Once you configure permissions for the desired set of users and groups, click OK to save your changes.



## Stream-Aware Command Permissions

For commands that apply to a stream or stream hierarchy, you can add a new condition for that stream and configure command permissions that you want to apply to it only. You can also choose to make your command permission setting inheritable so that it applies to the entire stream hierarchy below the specified stream. For example, suppose you want to allow users to change the streams in the "development" stream hierarchy, but you don't want anyone to change streams above that level. To accomplish this, you could deny access to chstream in the global default, but set an explicit inheritable "allow" permission for the chstream command on the “development” stream:





## Removing Command Permissions

To remove a condition entirely (except for the Global Default Condition), highlight the condition and click the “Remove Command Permissions” button. To remove command permissions for a specific user or group from a condition, highlight that condition and select “Change Command Permissions”. In the dialog that pops up, remove the users and groups that you no longer want permissions to be set for.

By default, if no permission is set for a user or any group he is a member of or the built-in group that he is a member of, the user is implicitly granted "allow" permission for that command.

## Push Notifications

In Release 7.1, the AccuRev server generates push notifications for all write operation events. These notifications are published through the Mosquitto MQTT Broker, which was introduced in AccuRev 6.2 for use with Gated Streams. The notifications are configurable at the server side, consumed by the GUI, and available to users at the client level via the CLI.

### Server

A new setting called **NOTIFICATION\_LEVEL** in the `acserver.cnf` file configures the type of notifications that are published.

All notifications are classified into the following four categories:

- Streams (e.g., keep, promote, chstream)
- AccuWork (e.g., create/edit an issue, cpkadd)
- Depot (e.g., mkdepot, mktrig)
- Site (e.g., mkuser, chgroup)

```
# Push notifications, 0=Off, 1=Streams, 2=AccuWork, 4=Depot, 8=Site, 15=All (1+2+4+8)
NOTIFICATION_LEVEL = 1
```

To specify which notifications get published, add the values for each desired category together. Streams and AccuWork notifications would be 3, for example; all notifications would be 15. To turn the feature off, set the notification level to 0.

The default notification level is 1 -- stream-type notifications only.

### GUI

The views that a user has open in the GUI can become out-of-date as other AccuRev users execute operations. In 7.1, the GUI uses the server-generated stream notifications to display “notification badges,” which give the user a hint that activity has occurred in the stream(s) they are viewing.

The GUI displays notification badges in the tab header of the following types of views:

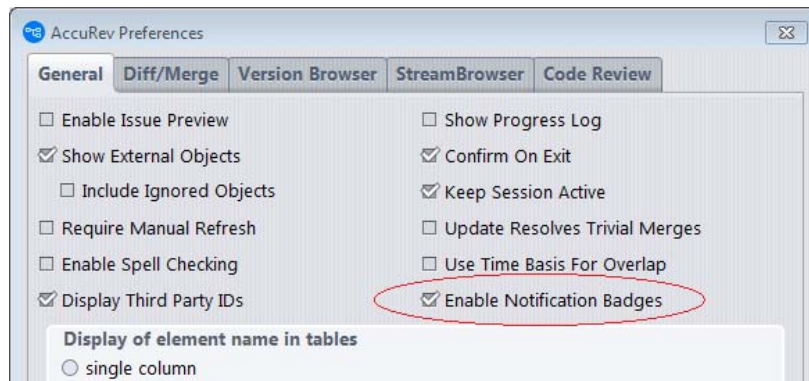
- Stream Browser
- History (depot, stream/workspace, transactions)
- File Browser

In the screenshot below, the badge indicates that two new transactions have occurred in this Stream (Workspace) History view.



Badge notification counts increment for each new applicable transaction that has occurred since the view was generated or refreshed. Refreshing the view clears the badge (since the view then includes the latest transactions).

Notification badges are configured via a preference setting. There is one global setting for all types of views:



## CLI

The new **trace-event** CLI command listens for the server-generated notification events and can print them to the screen, output them to a log file, or pass the values to a script to take some user-defined action.

**trace-event** has arguments to filter notifications based on category or notification kind, by depot, stream, or user. If you specify no arguments, **trace-event** listens and prints all push notifications generated by the server.

```
# accurev trace-event
Trace Event: Connected to server myserver: 1883
Trace Event: Subscribing to 'accurev/info/notifications/'
```

*Note:* Unlike other AccuRev commands, **trace-event** continues to listen until it is interrupted with a **Ctrl+C** or **Ctrl+Break** signal.

Refer to the *CLI User's Guide* for additional details on the command arguments and examples.

Site administrators can control access to the **trace-event** command through the new *Admin Command Permissions GUI* or through the traditional **server\_admin\_trig** trigger. Users without access to the **trace-event** command will see the error message "You are not authorized to perform this operation."

# Changes in AccuRev Release 7.1

AccuRev Release 7.1 includes the following new features and bug fixes.

**Note:** In cases where an issue is identified with two numbers, such as 10721 (1098410), the first number is the issue number in the AccuWork issue tracking system, and the second, in parentheses, is the issue number in the SupportLine system used by Customer Care.

## **7071 - "hist -t" often returns transactions outside the -t bounds**

**hist -t** now returns the set of transactions that are within the specified boundaries and does not include any transactions outside those boundaries.

## **13165 (1096984) - RFE: Add "pop" option to specify EOL terminators when copying elements to a non-workspace location**

The **pop -v -L** command now supports two new options, **--eol=unix** and **--eol=windows**, which allow the user to specify what kind of line endings to use when copying a version of an element into a non-workspace location.

## **22438 - GUI: Incorrect information is displayed for date interval in Show History of a stream**

**hist -t** now returns the correct set of transactions when the user gets a stream history within a specified date interval and then changes one of the dates in that interval.

## **27702 (1098155) - Bulk merge tool should not convert EOLs in file to platform-specific EOL**

Prior to Release 7.1, a bulk merge of files that contained only trivial merges automatically converted all end-of-line sequences to the platform-specific end-of-line sequence. This conversion is no longer done in 7.1.

## **34585 (1095258) - Add a recursive switch for a directory history**

The **hist** command has a new **-R** option, which displays the history of transactions that affect the specified folder and all files and folders in the subtree beneath it.

## **36319 (1096259) - WebUI does not display stream colors**

The WebUI now correctly displays stream colors that have been configured by setting the "streamStyle" stream property.

## **41045 (1104197) - RFE: GUI: A way to limit the number of active transactions displayed for a stream**

A GUI user can use a new dropdown in the Active Transactions default group and tab to select the number of active transactions (20, 50 or 100) or the number of months of active transactions (1, 3, or 6) to display. The user can also elect to show *all* active transactions by choosing "Everything" in the dropdown.

## **41126 (1095129) - GUI: Allow ESC from pop-up window**

The Find and Format Columns dialog boxes can now be closed by hitting the ESC key.

## **44107 - RFE: GUI: Add ability to sort items in the Workspace Explorer by file extension**

The Workspace Explorer mode of the File Browser view now has a column called "Extension", which displays the extension of file names. Sorting in either direction can be done on this column.

#### **44137 - ACLs should not block diff/merge/annotate with version from an access-restricted stream**

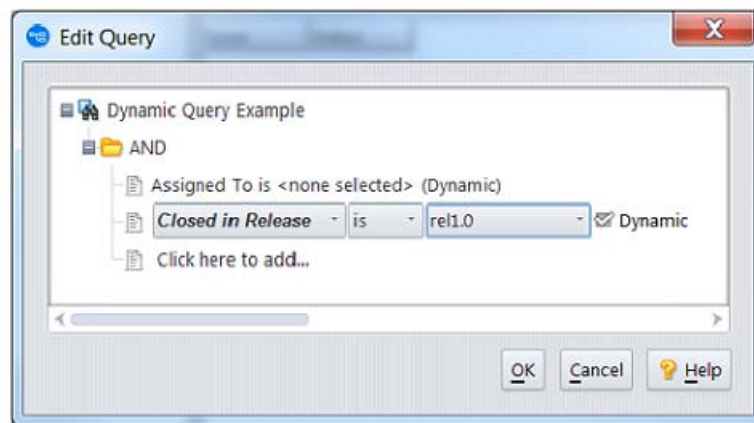
As of Release 7.1, a user can perform diff, merge, and annotate operations on files even if ACLs restrict the user's access to streams containing ancestor versions that are involved in the operations.

#### **44139 - RFE: GUI displays aliases for servers instead of their IP addresses and host names**

From the GUI login dialog, the user can now edit a server and define an alias for it. That alias will be displayed instead of the server's IP address and hostname in the GUI's list of available servers.

#### **44187, 47314 - RFE: GUI/WebUI: Ability to specify search values dynamically at the time of query execution**

When defining an issue query in either the GUI or WebUI, the user can mark one or more query fields as "dynamic". This is done by (a) optionally specifying a default value for the field, and (b) checking the field's checkbox labeled "Dynamic". Then, when the query is executed, the user will have the opportunity to change the value of all the query's dynamic fields before the query actually executes.



#### **44266 (1107583) - WebUI: Created or modified issue query fails to retain selected entries**

The WebUI now correctly stores issue queries that contain multiple clauses for the same user-type field.

#### **44415 (1107786) - EACL: Failure to set eacl when there are duplicate files/directories listed in input file**

The **eacl** command now functions properly even if its input file contains duplicate entries for an element (file or directory).

#### **46495 (1109762) - GUI: Editing a user takes several minutes to display the Edit User dialog**

In the Admin => Security tab, the Edit User dialog opens much more quickly now due to use of a faster algorithm for finding the groups to which the user belongs.

#### **46621 (1096036, 1100809) - RFE: Save acclient.cnf file in a location that is accessible to non-admin users in Windows**

The AccuRev install process places a template for **acclient.cnf** into the **<ac-install>/bin** folder, and the AccuRev 7.1 GUI then copies that file into each user's **%ACCUREV\_HOME%/.accurev** folder. Placing the file in this folder enables modifications by non-admin users.

## **46653 - RFE: GUI: Add support for new Clone relationship type**

Release 7.1 supports a new type of relationship called **Clone** in the Schema Editor. It is now possible to add a field of Relationship type Clone to the schema. This enables users to see in AccuWork what issues were created as clones of other issues.

## **46785 - RFE: Support client auto-upgrade via custom MSI, etc.**

The client upgrade command, available via **Help > Upgrade Client** in the GUI or "**accurev upgrade\_client**" on the command line, now supports custom-created installers such as Windows MSI files. Administrators must deploy their custom installers on the AccuRev server machine in the folder **<ac-install>/bin/installers/<OS>**, alongside the standard AccuRev installers, and then add corresponding entries to the acserver.cnf file.

**Note:** This feature works only with clients running AccuRev 7.1 or later. Clients running older versions of AccuRev cannot use custom installers.

For each custom installer, the administrator must add a line of the following format to acserver.cnf:

```
<OS>_INSTALLER=<installer>
```

where <OS> is one of the following: **WIN**, **LI NUX**, **SOLARI S**, **MAC**

As an example, to make the AccuRev server use an MSI file called OurCustomerINST.msi, add this line to acserver.cnf:

```
WIN_INSTALLER=OurCustomerINST.msi
```

Do not specify the full path; the MSI file must be located in the **<ac-install>/bin/installers/Windows** or **Windows64** folder.

If the file specified in a custom installer entry does not exist, the AccuRev server will look for the default AccuRev installer (AccuRevClientInstaller) appropriate for the operating system.

If a custom installer requires command line parameters, they can be specified in a second entry in the acserver.cnf file, using this format:

```
<OS>_INSTALLER_PARAMS=<parameters>
```

Note that these changes to acserver.cnf can be made without stopping the AccuRev Server service. The AccuRev Server checks the file for these installer entries each time that a client upgrade is performed.

## **46793, 46883 - GUI, WebUI: Show all relationship changes in Issue History**

Changes in issue relationships are now tracked in AccuWork's Issue History tab and are visible in both the GUI and WebUI issue displays.

## **46928, 47061, 47539 - GUI: Display an issue field's label, if it exists, instead of the field name**

The AccuRev GUI now displays issue field labels instead of issue field names in the Query Editor, AccuWork's Issue History tab, and in the Schema Editor's Validation tab and New/Edit Promote Trigger dialog.

## **47015 - WebUI should export Display Property of User-type fields in query results**

Query results exported by the AccuRev 7.1 WebUI now use the configured Display Property for user-type fields instead of the AccuRev user name. For example, if the schema defines the Display Property for the "Assigned To" field to be the user's email address, then the "Assigned To" column in the exported query

results will list email addresses for all users that have one defined, and it will list the AccuRev user name for users that do not have an email address.

### **47313 - RFE: GUI: Export issue attachments when issue query results are exported**

The GUI can now export issue attachments when exporting issue query results. If an Attachments-type field is configured as a column in the query results table and an issue has attachments in that field, then after the results table is exported, a "Save Attachments As" dialog prompts the user to save an archive of all issue attachments. If the user accepts or edits the name of the archive, the attachments are exported as a zip archive, sorted by issue. This is an optional step of the Export Table operation -- if the user clicks Cancel in the dialog, the Export operation completes successfully and opens the exported table. This applies to all export types (html, xml, csv).

### **47317 - Update the scripts delivered in the `accurev/extras/unix` folder**

The scripts installed on the AccuRev server in `accurev/extras/unix` have been updated, and new scripts have been added. All the scripts now will **su(1)** prior to starting or stopping any of the AccuRev processes that the script runs. The updated contents of `accurev/extras/unix` are:

- **accurev** - AccuRev Server startup, where the server can be an AccuRev Master, AccuRev Replica, or AccuRev Remote License Server
- **accurev\_mqtt** - AccuRev Mosquitto service / Message Queue Telemetry Transport (MQTT)
- **accurev\_replica** - AccuRev Replica: Creates AccuRev login sessions, possibly via an SSH tunnel or your own custom configuration. Used in conjunction with the **accurev** script.
- **accurev\_web** - AccuRev Web Service
- **accurevSetLinks** - Script to create links in `/etc/init.d` to start and stop the above processes. See the documentation in this file for instructions on how to use this script.
- **README** - General documentation
- **acserver.cnf-ssh** and **acserver.cnf-notSecure** - Example reference files to aid in configuring an AccuRev Replica when using the **accurev\_replica** script

### **47593 (1111427) - GUI: Diff/Merge must honor file's type (text/ptext) and not probe file to see if its contents are binary**

The GUI no longer displays a warning message "Unable to diff binary files" when a user tries to diff a ptext file that contains binary content. AccuRev 7.1 allows the user to diff binary files.

### **47935, 48107 - GUI: Diff/Merge enhancements**

The following diff/merge enhancements have been made in Release 7.1:

- diff of image files is supported.
- If a third-party diff tool is configured, binary file diff is enabled.
- BeyondCompare v3 and v4 are supported on Windows, Linux, and macOS.
- Araxis is supported on macOS.
- TkDiff no longer has to be located in the AccuRev bin directory.
- Preferences for custom third-party diff or merge tools are now sticky, allowing the user to switch back and forth between tools without losing their configuration.

## 47961 - Upgrade the Tomcat version used by the WebUI

The AccuRev 7.1 WebUI is installed with and runs on Tomcat 8.0.47.

## 48092 - Add transaction values to client-side pre-promote trigger

Transaction IDs are now passed to the pre-promote trigger when a user executes a Promote By Transaction operation.

## 48365 (1112125) - GUI: Refresh View does not refresh Stream Browser

This defect has been fixed, and Refresh View correctly refreshes the Stream Browser view now.

## Corrections and Changes to the Documentation

Please note the following corrections and changes to the AccuRev 7.1 documentation:

### 47191 - DOC: Installation Notes: Update Mac OS X section about running acdiffgui on Mac

In the "Mac OS X" section of the Installation Notes, `accurev-common.jar` has been added to the jar file list in the perl script for running `acdiffgui` on Mac platforms.

## Known Issues

This section describes known issues in AccuRev and in the AccuRev Web UI.

### Installation on Windows with User Account Control (UAC) enabled displays confusing dialog

If installation of the AccuRev 7.1 server or client is attempted on a Windows system while User Account Control (UAC) is enabled, the installer will open a "User Account Control" dialog that displays the program name as "Micro Focus International plc" instead of the name of the AccuRev installer executable. The user can safely click on the Yes button to continue with the AccuRev installation.

### Switching servers in GUI stops display of notification badges

If a user switches the GUI from one AccuRev server to a different AccuRev server (via **Tools => Login...**), notification badges will no longer be displayed.

**Workaround:** Instead of using **Tools => Login...** in the GUI to switch from server A to server B, take the following steps:

1. Exit the GUI instance that is connected to server A.
2. Execute **accurev logout** from the command line to terminate the session with server A.
3. Start the GUI and login to server B.

### WebUI export of issue query results generates incorrect XML

If any of the exported issue fields have labels that contain spaces, then the XML generated by the WebUI will be incorrectly formatted, and the query results will not display correctly in a browser.

**Workaround:** Edit the generated XML and change all spaces in issue field labels to underscores. For example:

Original XML:

```
<?xml version="1.0" encoding="UTF-8"?>
```



```
<table>
<Issue>
<Issue>38747</Issue>
<Assigned To>John Moore</Assigned To>
<Short Description>Sorting is done on wrong field</Short Description>
</Issue>
</table>
```

Edited XML:

```
<?xml version="1.0" encoding="UTF-8"?>
<table>
<Issue>
<Issue>38747</Issue>
<Assigned_To>John Moore</Assigned_To>
<Short_Description>Sorting is done on wrong field</Short_Description>
</Issue>
</table>
```

# AccuRev 7.0.1 Release Notes

This chapter describes changes and other information related to AccuRev 7.0.1.

**Note:** To ensure optimal performance, install all applicable updates for your operating system.

## Deprecated Platforms

The following platforms are deprecated in AccuRev 7.0.1 and will not be supported in the next release of AccuRev:

- Linux Red Hat Enterprise 5
- Linux Ubuntu 12, 13
- Linux Fedora 23, 24

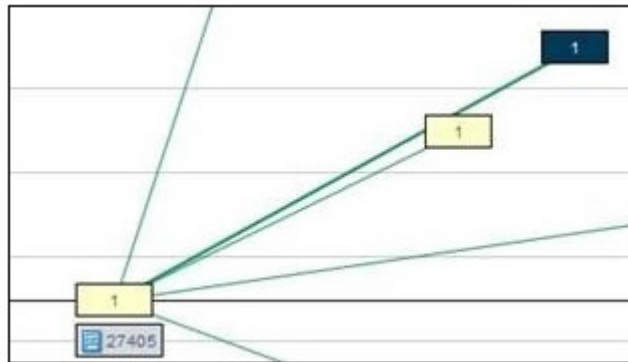
## What's New in AccuRev Release 7.0.1

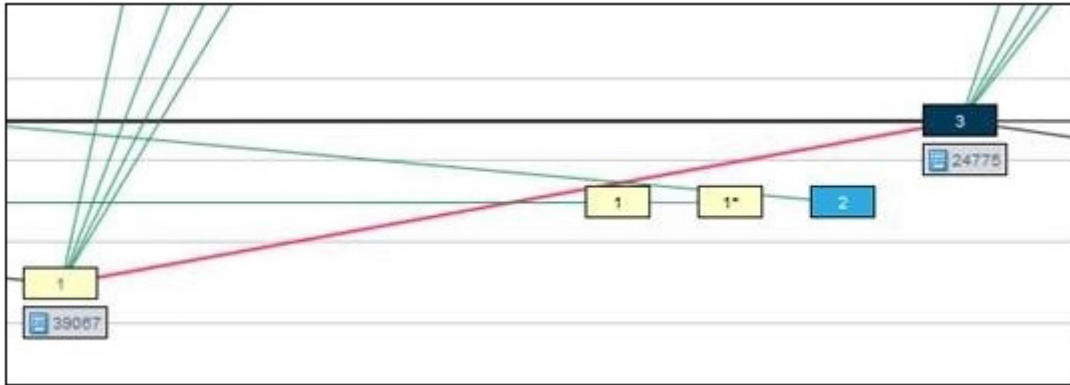
Highlights of the exciting new developments in AccuRev 7.0.1 are captured here.

### Version Browser: Highlighted Version Relationships and Show Promotion Path

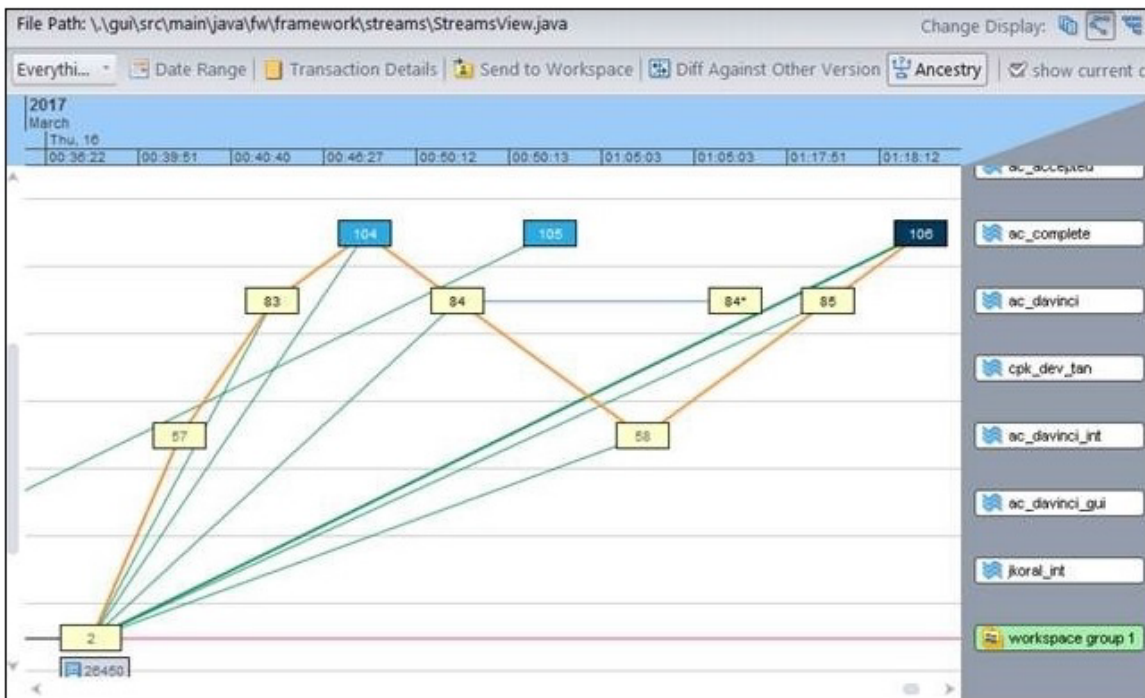
The Version Browser has been enhanced with two new features to help the user visualize the flow of changes in the system: (1) highlighting of version relationship lines, and (2) the new **Show Promotion Path** operation.

When the user clicks on a version to select it, the Version Browser now highlights the box representing that version *and all lines leading directly from earlier versions to the selected version*. The highlighted lines are drawn with a heavier weight line, but still in the appropriate color to identify the type of relationship. Two examples showing highlighted relationship lines follow:



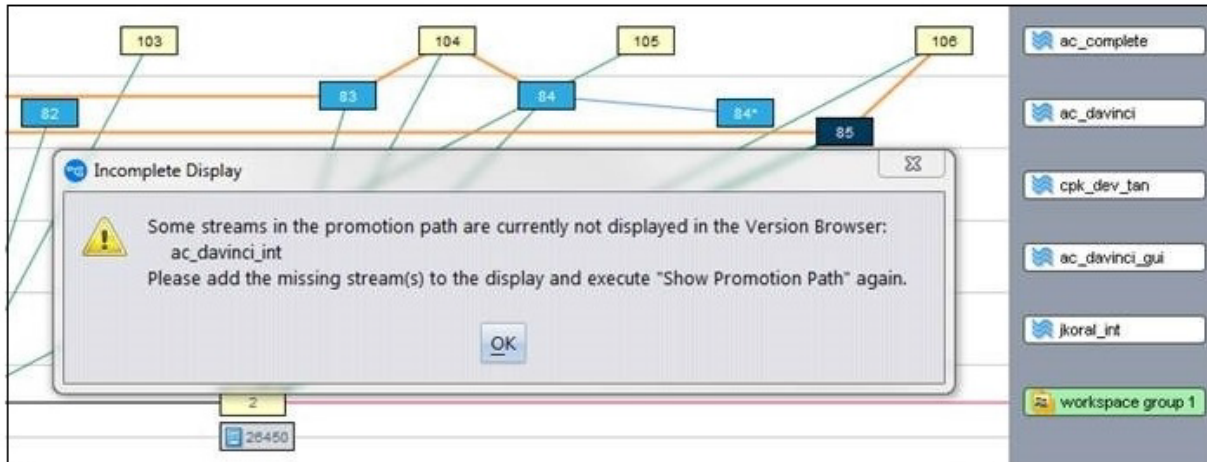


**Show Promotion Path** is a new operation available in the context menu of versions that were created by a Promote or Demote operation. Show Promotion Path uses a solid orange line to display the sequence of promotions and demotions leading from a real (kept) version all the way to the selected virtual version. For example:



AccuRev will draw a horizontal line going off the left edge of the window if the left endpoint version is not displayed (due to the current transaction range or swim lane choices). If streams in the promotion path have been filtered out of the version browser display (causing the promotion path line to be discontinuous),

AccuRev will display a dialog telling the user which streams to add to the display in order to see the full promotion path:



The user can clear the promotion path from the display by doing one of the following:

- clicking Refresh View
- changing the transaction range
- executing Show Ancestry
- clicking on a different stream in the bottom panel of the version browser

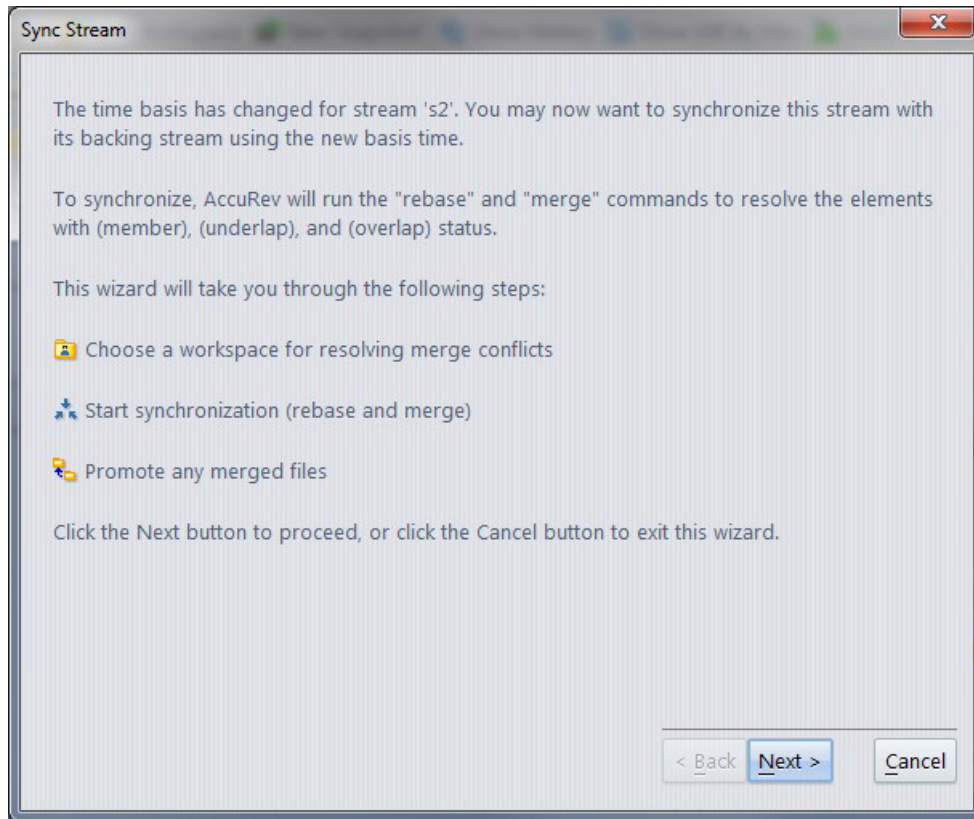
Scrolling around the panel or dragging versions around the display will not make the promotion path disappear. This allows the user to move versions around to clarify the display.

## Sync Stream Wizard in the GUI

When a stream's time basis is modified, there may be newly visible changes in the backing stream that need to be merged with the changes in the time-based stream. The new "Sync Stream wizard" in the GUI takes care of this situation by running **rebase** and **merge** operations to sync the stream with its backing stream. This wizard is invoked automatically when the user changes a stream's time basis in the Stream Browser. It can also be invoked manually on any stream by clicking the Sync button in the File Browser view.

The Sync Stream wizard first runs the **rebase** command to resolve elements with (member) and (underlap) status. If the stream contains any files with (overlap) status, the wizard then executes the **merge** command, resolving any merge conflicts in a workspace that is selected by the user. Autokeep is automatically enabled, so trivial conflicts are resolved and kept without requiring user input. As its final step, the wizard prompts the user to promote all the resolved conflicts from the workspace up to the stream.

The initial screen of the Sync Screen wizard looks like this:

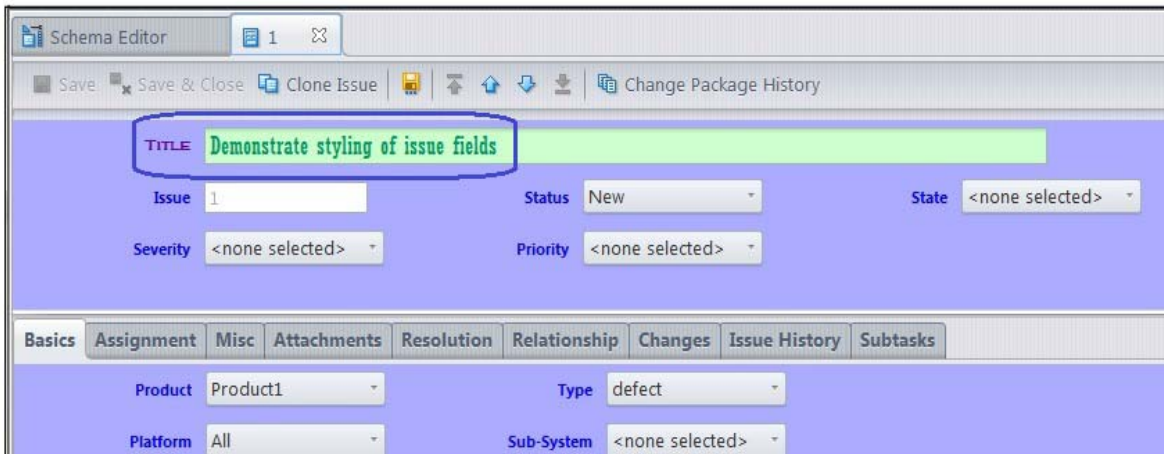
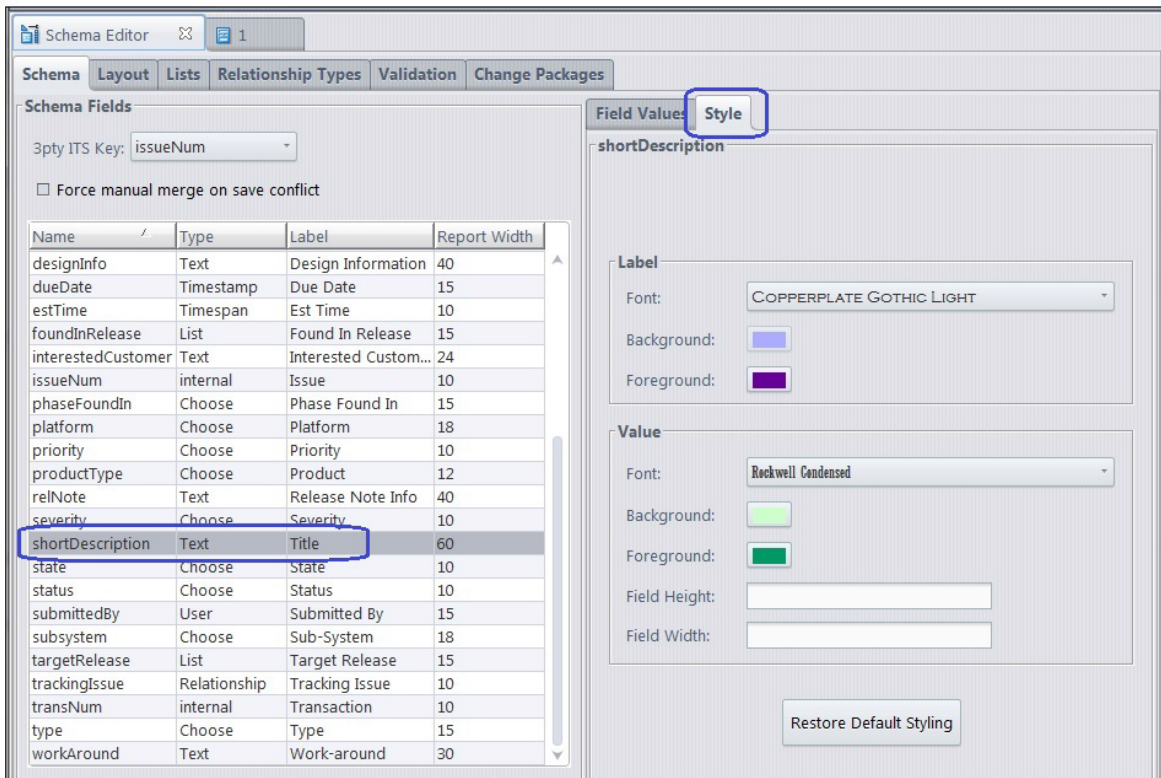


## Styling Individual Issue Fields in the Schema Editor

Previous releases of AccuRev provided limited abilities to style AccuWork issues – the administrator could only specify the colors to be used for all field labels, required field labels, and the issue background. Release 7.0.1 enables more extensive styling of individual issue fields. Depending on the type of the issue field, it may be possible to specify the font style and foreground color for the field label and the field value, as well as the background color for the field value. For certain types of fields, the width and height of the value can be specified too.

Styling of an issue field is done in the new **Style** subtab of the Schema Editor’s **Schema** tab. The **Restore Default Styling** button gives the user the option of returning to the default styling parameters for the current issue field.

The following screenshots depict how one might style the “Title” issue field and the resulting appearance of the field:



## Crucible Connection in the GUI

The AccuRev GUI now supports integration with Atlassian Crucible servers via a new AccuRev feature called **Crucible Connection**. This integration improves developer productivity and alleviates performance issues native to the Atlassian Crucible server related to creating and modifying code reviews using the Crucible web browser and accessing the web application. By using the REST API provided by the



Crucible application and the AccuRev Plugin for Crucible, the AccuRev GUI can now integrate with Crucible by using HTTP and secure HTTPS connections (i.e., TLS v1.2).

**Note:** Crucible Connection works with Crucible 4.1.2 using **AccuRev Plugin for Crucible** version 2017.1. The **AccuRev Plugin for Crucible** must be installed as a managed add-on for the Crucible server in order for Crucible Connection to work properly; the plugin allows Crucible to interact with the AccuRev server.

To enable the Crucible Connection feature, enter Crucible server and user information in the Code Review panel of the AccuRev GUI's Preferences dialog. If the "Enable code review integration" checkbox is selected, the GUI displays new menu items in various views to send active file changes, transactions, and/or issues to "New Reviews" and "Existing Reviews." Crucible project and review information is retrieved from the Crucible server and is filtered in the GUI based on the depot that is active in each AccuRev view.

## Archive Enhancements

Release 7.0.1 introduces two new convenient ways of dealing with files that either need to be archived or have already been archived. The first helps to identify which files the user would benefit most from archiving, and the second provides a mechanism by which the AccuRev server can access an archived file without actually unarchiving it.

### Identifying Which Files to Archive

An administrator who wants to free up disk space can execute the **maintain verinfo** command on the server to identify which files to archive. Each time a file is modified and kept, a new version of that file is created and stored on the server in a "storage container file." The **verinfo** command indicates, for each element on the system, how many different, unarchived versions of the element are currently in storage and the total amount of space occupied by all of those storage container files. The results are sorted in descending order of amount of space occupied; therefore, the best candidates for archiving (i.e., those whose storage containers use the most disk space on the server) are returned first.

The **verinfo** command is also available on the client side via **accurev verinfo**. This enables administrators to issue the **verinfo** command from any client machine instead of having to login to the AccuRev server machine.

### Accessing an Archived File

Sometimes a storage container file that has already been archived is required again. A user might want to patch an old issue that requires that container file, or perhaps he just wants to see how that file changed over time using **annotate** or **diff**. Whatever the reason, he needs a way to gain visibility to the content that was in the archived file.

The **unarchive** CLI command could be used to restore the archived storage container file to its original location in the depot's file storage area. However, the container file's status would change from *archived* to *normal*, and the user might then need to re-**archive** the file if he no longer needed it.

Release 7.0.1 offers a simpler alternative – a new trigger called **server\_archFiles\_trig**, which provides a way to access an archived file on an as needed basis, without unarchiving the file. When installed, the trigger gets called whenever a container file is missing from the depot's storage location. The trigger is passed the name of the depot and the file being accessed, along with the file's original storage path. The trigger can be written to access the data directly from the archive location and copy that data into a

temporary file that the server can access. That temporary file only exists for the duration of the command that required access to the file content. A sample script is included in the examples folder.

## License Management Enhancements

License management has been enhanced in several ways in 7.0.1. The following sections describe how.

**Note:** If you are upgrading to 7.0.1 from a version older than 7.0, you will need to obtain a new license file as we changed our license technology starting with version 7.0. See [Get an AccuRev License](#) on page 9 for more information.

### Master License Server

If you have multiple AccuRev master servers, one of those servers can be configured to be the *master license server*, which serves licenses to all of the other master servers.

During a fresh 7.0.1 install or an upgrade to 7.0.1, the installer asks whether license information should be obtained from a local license file or a remote license server. On the machine that is to be the master license server, select the local license file option.

On the other master server machines, select the remote license server option. You will then be prompted to enter the following values for the remote license server:

1. **Host:** The host name of the AccuRev master license server (which will serve licenses to the other master servers)
2. **Port:** The port that the master license server is configured to listen on (typically port 5050)
3. **Username:** The name of a user configured on the master license server. This username is used to verify that the local master server is authenticated and authorized to request licenses from the master license server.
4. **Password:** The password for the Remote License User account on the master license server

**Note:** When one of the master servers is configured as the master license server, then *all* of the master servers must be configured such that either:

- SSL is *enabled* on the master license server and all the AccuRev master servers that obtain licenses from it

or:

- SSL is *disabled* on the master license server and all the AccuRev master servers that obtain licenses from it.

### Sharing Licenses Across Clients

Each master server uses its own pool of licenses, but *within* a single master server, licenses are shared by user name. This means that if a single user logs into the same master server from many different clients, he still consumes only a single license. However, if that same user logs into a different master server, a second license is consumed for that second master server login.

### Replica Server Installation

The installation process for a replica server no longer prompts for license information. Replica servers do not need to be configured with licenses because they get their license information from the master server they are replicating.



## User Account Credentials on Master License Server

If the user account credentials on the master license server are modified, the other master servers can be updated via the **maintain** utility:

- `maintain setcnf REMOTE_LICENSE_USER <user_name>`
- `maintain setcnf REMOTE_LICENSE_PASS <user_password>`

These settings are stored in the `acserver.cnf` file on the local master server. The password is encrypted in the same way as the `DB_PASS` password for accessing the PostgreSQL database.

### “accurev licenses –fxv” Output

The output of the **accurev licenses –fxv** command has been enhanced in the following ways:

- The `last_renewed_time` attribute in the `user` tag has been renamed to `last_accessed_time` for clarity.
- A new `host` attribute in the `user` tag identifies the master server that the license was checked out for.
- A new `port` attribute in the `user` tag identifies the port that the master server is listening on.
- A new `type` attribute in the `license` tag distinguishes between “floating” and “named” licenses. (Currently only floating licenses are sold.)

Here is an example of the enhanced output:

```
<acResponse>
  <licenseCounts>
    <license
      name="AccuRev"
      count="250"
      usage_count="1"
      type="floating"
      min_checkout="1440"/>
    <user
      name="testuser1"
      host="myhost"
      port="5050"
      checkout_time="2017/05/08 11:11:03"
      last_accessed_time="2017/05/08 11:18:17"/>
  </license>
</licenseCounts>
</acResponse>
```

## Changes in AccuRev Release 7.0.1

AccuRev Release 7.0.1 includes the following new features and bug fixes.

**Note:** In cases where an issue is identified with two numbers, such as 10721 (1098410), the first number is the issue number in the AccuWork issue tracking system, and the second, in parentheses, is the issue number in the SupportLine system used by Customer Care.

### **10721 (1098410) - GUI: User's public queries are sometimes not displayed**

In previous releases, saving one's public queries could cause those queries to disappear from the display if other users were also saving their public queries at the same time. This defect has been fixed in 7.0.1.

### **16371 (1097082) - GUI: Add ability to remove another user's workspace (already possible on command line using rmws -s)**

The GUI now provides the ability to remove another user's workspace (by executing "Remove" in the workspace's context menu). The confirmation dialog identifies the user who owns the workspace.

### **27275, 41817 (1098163, 1098121) - GUI: Clicking a row in the Stream Browser search results table does not locate stream in collapsed tree**

Clicking on a row in the table of search results at the bottom of the Stream Browser view should locate and select the corresponding stream in the graphical display in the top part of the Stream Browser view. Prior to 7.0.1, this function did not work if the stream was located in a collapsed subtree of the stream hierarchy. The 7.0.1 GUI correctly handles the situation by expanding the collapsed subtree and highlighting the selected stream.

### **33724 (1094949) - GUI: The preferences.xml file may not be valid after an upgrade from 5.x to 6.x, causing Save Layout to fail.**

The upgrade from AccuRev 5.x to 6.x required that a user's .accurev/preferences.xml file (found in the \$HOME or %ACCUREV\_HOME% directory) be removed after the upgrade in order for the Save Layout functionality to work properly in the 6.x GUI.

This problem does not exist for upgrades to Release 7.0.1.

### **36137 (1097059) - Tasks are not being completed due to locks on workspace files**

In previous releases, a client command (**update**, **stat**) could become unresponsive if multiple commands were running simultaneously in the same workspace. This was due to a contention problem within the workspace's local TSO database. These hung client commands would show up in the server tasks tab as long running tasks. This issue has been fixed in 7.0.1.

### **36858 (1098352) - GUI: Cancelling the Required Fields dialog should result in no changes to issue form**

When a user saves an issue without providing values for some required fields, the GUI displays the Required Fields dialog. In 7.0.1, the values entered in the Required Fields dialog are not written to the issue form until the user clicks Save. That way, if the user clicks Cancel in the Required Fields dialog, the issue form remains completely unchanged.

### **38631 (1100416) - GUI: Support change workspace functionality in Stream Browser**

In the 7.0.1 GUI Stream Browser, the context menu for workspaces now includes "Edit", which displays the "Edit workspace" dialog.

### **38727 (1100721) - "accurev issuelist" result omits issues that have subtasks**

In previous releases, the list of issues returned by the "accurev issuelist -s" CLI command omitted an issue that was active in the stream if that issue had a subtask issue that was not complete in the stream. This defect has been fixed in 7.0.1 – active issues are included in the result regardless of their subtask issues' status.

### **38927 (1101346) - GUI: Differentiate more clearly between Promote and Demote**

In order to prevent accidental execution of the **Demote** command instead of the **Promote** command, the 7.0.1 GUI makes a clearer distinction between the two commands in these ways: (a) the buttons for **Promote** and **Demote** are horizontally separated by a large space, and (b) in the context menu, **Demote**, along with the **Revert** operations, have been moved into a submenu called “**Undo Actions**”.

### **38999 (1101615) - GUI unable to display issue history**

In the past, the GUI was unable to display Issue History if an issue contained a field that (a) held a lot of data (e.g., a very large body of text) and (b) had been modified many times. In 7.0.1 the method for identifying modified fields has been streamlined and made more efficient. As a result, this GUI defect has been resolved.

### **39425 (1102853) - AccuRev metadata backup doesn't include all stream favorites information**

Prior to 7.0.1, stream favorites information was stored in .sto files under the server's *<ac-install>/storage/depots* directory, and references to the .sto files were stored in the database. Consequently, restoring AccuRev metadata did not restore the .sto files, and this caused the GUI to hang as it started up after a restore. In 7.0.1, stream favorites information is stored in the database and is therefore restored along with other metadata. During an upgrade to 7.0.1, the data in existing .sto files is copied into the database. (The .sto files are not deleted during upgrade; they are left intact.)

### **41703, 41708 (1105061) - Many backed files shown with (external) status in Outgoing mode of File Browser**

Prior to 7.0, backed files were sometimes shown with (external) status in the GUI. This was caused by a defect in the **files** CLI command. If an element argument to the command either started or ended with a path separator (e.g., '/'), then AccuRev would sometimes incorrectly mark some elements as external. This defect in the **files** command has been fixed in Release 7.0.1.

### **44085, 44287, 44674 (1097691) - Archive enhancements**

AccuRev 7.0.1 includes several enhancements to the way that users can interact with files that have been archived. These enhancements help to identify which files the user would benefit most from archiving, and they provide a mechanism by which the AccuRev server can access files that have been archived.

See [Archive Enhancements](#) under [What's New in AccuRev Release 7.0.1](#) for more complete information.

### **44109 - GUI: Choose schema fields by label instead of name when creating a query**

AccuRev's web interface allows the user to select issue fields by label rather than by name when creating or editing an issue query. As of 7.0.1, the GUI's query editor does the same. This is especially useful to users whose display language is something other than English (since the field labels are in English).

### **44111 - GUI: In Schema Editor, add ability to configure max number of displayed items in List and Choose fields**

It is now possible to configure the maximum number of rows displayed in the dropdown list for an issue field of type List or Choose. The value is set in the “Number of Items Visible” field on the new Style sub-tab of the Schema Editor's Schema tab. (If the number of items in the list exceeds the configured value, a scrollbar is displayed with the dropdown list.)

#### **44112 - GUI/Web UI: Support line breaks in schema field labels**

Long schema field labels are automatically wrapped when an issue is displayed in either the GUI or Web UI. In 7.0.1 it is also possible to force a line break at a particular place in the label by inserting “\n” in the text of the label.

#### **44113 - GUI: Support Undo in text fields**

Release 7.0.1 supports Undo functionality in text fields in the GUI.

#### **44114 - GUI: Merge operation in issue change palette appears to succeed even though a locked file prevents the merge from completing successfully**

When a merge operation was executed from the issue change palette in previous releases, if a file lock prevented the content of a file from being updated after the merge completed, the GUI still removed the file’s (overlap) status and reported the merge operation as a success even though the file’s contents hadn’t changed.

AccuRev 7.0.1 now treats this scenario as a failed merge, displaying appropriate error messages to the user and displaying files in the issue change palette with their original, unchanged status. When multiple files are being merged, the entire operation is treated as a single transaction. If the merge of one file fails due to some error, then AccuRev halts the operation, undoes any merges that have already been completed, and reports the merge operation as a failure. All the files are restored to their original contents and status.

#### **44115 - Request localization and support of the AccuRev client on Mac OS in Japan**

AccuRev 7.0.1 supports the “ja” locale on Mac OS.

#### **44118, 44556 - GUI: Support styling of individual issue fields**

Beginning with Release 7.0.1, it is possible to style the label and value of individual issue fields. Style parameters can be configured in the new Style subtab of the Schema Editor’s Schema tab.

See [Styling Individual Issue Fields in the Schema Editor](#) under [What’s New in AccuRev Release 7.0.1](#) for more complete information.

#### **44119 (1105115) - Web UI: Query browser’s “Set up Columns” dialog lists a maximum of 100 available columns**

The Web UI’s query browser used to display only 100 items in the Available Columns list of the “Set up Columns” dialog. This limit has been removed in Release 7.0.1.

#### **44120 - Failed login attempts should be identified in acserver.log**

In previous releases, acserver.log gave no clear indication of whether login attempts succeeded or failed. Now each acserver.log login entry includes either “login\_successful” or “login\_failed”.

#### **44121 - GUI: AccuWork “Save Attachment As” should request confirmation before overwriting existing file**

In the GUI, if the user attempts to save an AccuWork issue attachment to a path that already exists on the client machine, AccuWork now displays a confirmation dialog instead of immediately overwriting the existing file.

#### **44124 - GUI: Login dialog or warning message goes unnoticed because there is no AccuRev icon in Windows taskbar**

Prior to 7.0.1, the AccuRev icon did not appear in the Windows taskbar until the user was successfully logged in to AccuRev. This made it difficult for users to find the AccuRev dialog if it was buried under other windows on the desktop. In 7.0.1, the AccuRev icon appears in the Windows taskbar immediately when the GUI is invoked.

#### **44125, 44147 - Add client-side setting to use time basis to determine overlap status**

The **stat** and **merge** CLI commands have a new option called “--use\_time\_basis\_for\_overlap”, which instructs AccuRev to identify overlap using a workspace’s update level or a stream’s time basis instead of using the current time. When this option is used, AccuRev shows (overlap) status for a file only if the file was overlapped at the time indicated by the workspace's update level or the stream's time basis.

The GUI equivalent of the “--use\_time\_basis\_for\_overlap” option is a new preference called “Use Time Basis For Overlap”, visible on the General tab of the AccuRev Preferences dialog. In addition, the File Browser displays a new checkbox called “Use Time Basis For Overlap”. If the user changes the value of the preference, the checkbox value is updated accordingly, and vice versa.

#### **44126 - Define server-side USE\_MOD\_TIME setting to control default file timestamps**

Earlier AccuRev releases support a client-side setting called ACCUREV\_USE\_MOD\_TIME, which can be set either as an environment variable or in the preferences.xml file in the user’s .accurev directory. A value of 1 indicates that a file copied from the repository into a workspace by the AccuRev commands **co**, **pop**, **purge**, **revert**, or **update** will have a timestamp equal to the original Keep time of the version in AccuRev. If ACCUREV\_USE\_MOD\_TIME is set to a value other than 1 on the client machine, the timestamp of the file will indicate the time that the copy was created.

In addition to that client-side setting, AccuRev 7.0.1 also supports a new server-side setting called USE\_MOD\_TIME, which can be set in the acserver.cnf file. If set to TRUE (case-insensitive), a file copied from the repository into a workspace will have a timestamp equal to the version’s original Keep time. If USE\_MOD\_TIME is set to any other value or is not set at all on the server, the timestamp of a file copied into a workspace will indicate the time that the copy was created.

*Important note:* If ACCUREV\_USE\_MOD\_TIME is set to any value on the client machine, that client-side value overrides the value of USE\_MOD\_TIME on the server. If ACCUREV\_USE\_MOD\_TIME is not set on the client machine, then the value of USE\_MOD\_TIME on the server is applied. If no variable is set on the client or server, then the file timestamp will indicate the time that the copy was created.

#### **44127 - GUI: Attaching a file to an issue and making a workflow transition without first saving the issue causes the file to be saved as a link path**

Prior to Release 6.2.2, attaching a file to an issue and then transitioning to another workflow stage without first saving the issue resulted in AccuWork:

- *not* attaching the file to the issue, and
- displaying the local path of the file as the File Name in the Attachments table.

This problem has been resolved in 7.0.1.

#### **44128 - GUI: Add confirmation dialog to prevent accidental creation of parent-child issue relationship**

In earlier releases, users could unintentionally create a parent-child relationship between two issues by dragging and dropping one record to another in AccuWork's query result panel. Release 7.0.1 resolves this problem by displaying a confirmation dialog before executing the operation.

#### **44129 (1096645) - server\_dispatch\_post trigger not reporting all issues changed in bulk update**

In previous releases, when a bulk update in the Web UI fired the server\_dispatch\_post trigger, the resulting email notification reported only one issue as having been changed. In Release 7.0.1, the email notification now properly identifies all the issues that were modified by the trigger.

#### **44130 - GUI: Add ability to use custom user properties (like Display Name) when exporting query results to a CSV file**

AccuRev 6.2.3 introduced the ability to display a custom user property instead of an AccuRev username in a field of type User in an issue form; however, the AccuRev username was still displayed when editing queries and viewing and exporting issue query results. With release 7.0.1, the configured custom user property is used instead of the AccuRev username in all of these scenarios.

#### **44132 - GUI: Impossible AccuWorkflow transition can be selected in pull-down menu**

In this release, AccuWorkflow transitions that cannot be made from the current stage are greyed out and disabled in the combobox that lists all the transitions.

#### **44134 - GUI: Highlight lines related to selected version in Version Browser**

In the Version Browser, all lines leading directly into the left side of the selected version are now drawn with a heavier weight line (but still in the appropriate color) to make it easier to view relationships between versions.

#### **44135 - Support depot and stream names that start with a digit**

Depot names and stream names may now contain a digit anywhere in the name, including at the beginning, but the name must contain at least one non-digit character.

#### **44136 - Web UI: Improve Issue Form Performance**

In previous releases, issue form validation in the Web UI could take a long time (over five seconds) if the issue schema contained many fields; this was especially true for the Microsoft Internet Explorer browsers. The 7.0.1 Web UI has been modified to improve issue form validation performance. In many common cases where validation used to take five seconds or more, the new Web UI has reduced that time to less than a second.

#### **44138 - GUI: Support pasting of multiple values into List Values or Field Values box of Schema Editor**

In the Schema Editor, it is now possible to paste a list of strings into the List Values or Field Values box for a schema field of type List or Choose, respectively. If duplicate values exist, the user is notified via a warning dialog, and the duplicate values are omitted from the schema field's list of permissible values.

#### **44140 - GUI, Web UI: Display warning dialog when user inputs an unsupported character**

When an invalid character is typed into an issue field, the AccuRev GUI and Web UI now display a warning message in the status bar. The GUI also plays a beep sound.

#### **44141 - GUI: Export attachment files with other issue data from query results table**

In this release, if a user exports a query results table containing an Attachments column, the GUI will prompt the user to enter an attachment archive file name. The GUI will save all files that are attached to the exported issues in a zip archive file, with a separate directory for each exported issue.

#### **44144 - GUI: Support forward slash character in List and Choose values in schema**

It is now possible for configured values of Choose- and List-type schema fields to contain the following characters: ‘/’, ‘&’, ‘>’, ‘<’, and ‘”’ (double quote).

#### **44149 - maintain: discard regular streams and workspaces that have no version history**

The new **discard** command in the *maintain* utility permanently deletes any type of stream (including snapshot and workspace), provided that the following criteria are true:

5. The stream has no child streams.
6. If the stream ever had any child streams, all of those child streams have already been discarded.
7. No other streams have cross-links into the stream.
8. No versions were ever kept in or promoted to the stream.
9. The stream is not the most recently created stream on the system.

If any of these criteria are not satisfied, the **discard** will fail.

Once **discard** deletes a stream, it is not possible to reactivate the stream. However, it is possible to create a new stream that has the same name as the discarded stream.

#### **44157 - Core: Add ability to lock users after “N” number of failed logins**

The new trigger **server\_login\_trig** gives AccuRev administrators the ability to lock out users after a certain number of failed login attempts. A sample script is included in the examples folder.

#### **44158 - GUI: Make bulk merge work for StarTeam merge**

The StarTeam merge tool now works properly in bulk merge mode. That is, if the user elects to auto-keep trivial merges, the StarTeam merge tool appears only for files that have non-trivial (i.e., conflicting) changes.

#### **44419, 45211 - Create wizard to update a stream after a time basis change**

The “Sync Stream wizard” introduced in the 7.0.1 GUI syncs a stream with its backing stream by running rebase and merge operations. The wizard is invoked automatically when the user changes a stream’s time basis. It can also be invoked manually on any stream by clicking the **Sync** button in the File Browser view.

See *Sync Stream Wizard in the GUI* under *What’s New in AccuRev Release 7.0.1* for more complete information.

#### **44443 - GUI Version Browser: Show the promotion path leading to a version**

The GUI Version Browser has a new context menu item called “Show Promotion Path” for versions that were created by a Promote or Demote operation. Show Promotion Path displays a solid orange line to

trace the sequence of promotions and demotions leading from a real (kept) version all the way to the selected virtual version. This path helps the user visualize the flow of changes in the system.

The user can clear the promotion path from the display by taking any of the following actions:

- clicking Refresh View
- changing the transaction range
- executing Show Ancestry
- clicking on a different stream in the bottom panel of the version browser

See [Version Browser: Highlighted Version Relationships and Show Promotion Path](#) under *What's New in AccuRev Release 7.0.1* for more complete information.

#### **44906 - Remove restrictions about Japanese characters in stream names in Japanese locale**

Release 7.0.1 supports the use of Japanese characters in stream names and depot names.

#### **45756 (1108535, 1109132) - GUI: Promote from workspace to backing stream fails after backing stream has been renamed**

In previous releases, promoting a file from a workspace to its backing stream would fail if the backing stream had been renamed. (Doing the promotion from the command line would succeed, however.) This defect in the GUI has been fixed in Release 7.0.1.

## **Corrections and Changes to the Documentation**

Please note the following corrections and changes to the AccuRev 7.0.1 documentation:

#### **37526 (1100041) - DOC: “Enabling the Client Upgrade feature” in Installation and Release Notes does not cover Mac OS X, Solaris, HP**

The Installation and Release Notes section on “Enabling the Client Upgrade feature” has been updated to address Windows, Linux, Solaris, AIX, and Mac OS X platforms. 7.0.1 does not support the HP platform.

## **Known Issues**

This section describes known issues in AccuRev and in the AccuRev Web UI.

#### **The GUI and Web UI for older AccuRev releases don't support later schema enhancements**

- If the schema contains (or ever contained) any fields of type Group, issue creation and editing must be done using the GUI or Web UI of Release 6.2.3 or later. A schema containing Group-type fields is incompatible with releases prior to 6.2.3.
- (minor) The Display Property for User-type issue fields is ignored in the GUI or Web UI of any pre-6.2.3 release. The AccuRev username is displayed instead of the configured Display Property.



- (minor) Styling of individual issue fields is ignored in the GUI of releases older than 7.0.1.
- (minor) The “\n” newline notation in a field label is displayed as the string “\n” instead of as a newline in the GUI and Web UI of releases older than 7.0.1.

### Context-sensitive help does not open on CentOS 6 machine

On a CentOS 6 machine (client or full install), clicking the "?" icon or the **Help => Help** menu item has no effect; context-sensitive help information is not displayed. (CentOS6 uses Gnome 2.28.2.)

Settings on the machine are as follows:

- the default web browser in the desktop environment is set to Firefox:

```
[auser@localhost bin]$ xdg-settings --list
```

```
Known properties:
```

```
default-web-browser          Default web browser
```

```
[auser@localhost bin]$ xdg-settings get default-web-browser
```

```
firefox.desktop
```

- **Online Help Browser** is set to "<Default Browser>" in the GUI's AccuRev Preferences dialog.

If **Online Help Browser** is set to "firefox" instead, then context-sensitive help gets displayed properly.



# AccuRev 7.0 Release Notes

This chapter describes changes and other information related to AccuRev 7.0.

**Note:** To ensure optimal performance, install all applicable updates for your operating system.

## What's New in AccuRev Release 7.0

AccuRev 7.0 contains new features designed to increase productivity among software development teams, including several change package usability enhancements and a new Show Ancestry feature in the GUI's Version Browser. AccuRev 7.0 also provides replica rollback capability, performance improvements, a database upgrade, and a new built-in license manager.

### Disaster Recovery - Replica Rollback

Replica rollback streamlines disaster recovery operations in a replicated environment. When the master AccuRev server has been restored to a previous backup, the **replica sync** command detects the change and initiates the rollback. The operation calculates how far back the replica must roll, removing database transactions and unused storage containers in depot slices. It then performs the normal sync to bring the replica in sync with the master.

### License Manager

AccuRev 7.0 replaces the Reprise RLM license manager with a new built-in license manager. The new license manager supports named and floating licenses. The license file is now named *aclicense.txt* instead of *accurev.lic*.

**Note:** In order to upgrade to AccuRev 7.0, you must first obtain a new license. For instructions on that procedure, see [Get an AccuRev License](#) on page 9.

See the *AccuRev Administrator's Guide* for a full description of license management in AccuRev 7.0.

### Change Package Usability Enhancements

#### Promote and Demote an Issue Variant

AccuRev 7.0 provides the ability to promote or demote an issue variant in certain use cases. The prerequisites for promoting or demoting an issue variant are the same as those for operating on a regular (non-variant) issue: no dependencies on other issues; no overlap; the basis version must be in the backing stream; and the version must coalesce with the backing stream versions.

#### Show Diff By Issues

In AccuRev 7.0 the **Show Diff by Issues** operation can display differences in issue variants.

AccuRev® Installation and Release Notes 2

## Change Package Dependencies

AccuRev 7.0 can display change package dependencies of an issue variant. That is, it can display the issues that a particular issue variant depends on, ignoring the issues that other variants might depend on.

## Merge with Backing Stream

For the *merge with backing stream* operation, AccuRev 7.0 has switched the “Merge-from” version and the direct ancestor version in the Version Browser display. The red merge line now originates at a workspace version instead of a backing stream version. This change enables a rebase merge to occur without losing any change package information. This change affects only Merge operations executed in 7.0 and later; it does not modify Merge operations recorded prior to 7.0.

## New “**Already Included**” Change Package Element Status

In the GUI’s **Show Active Issues** tab, clicking on an issue in the top pane causes the bottom pane to display data about the elements in that issue’s change package, including the version and status of each element. In AccuRev 7.0, the status of an element might be displayed as “**Already Included**”. This means that the exact version that is part of the change package is not in the stream, but a variant of it is. The version in the stream (the variant) is either a merge ancestor or a path ancestor of the version in the change package.

## GUI Improvements

### Show Ancestry Feature of Version Browser

The Version Browser’s new **Show Ancestry** feature helps the user see through the clutter of a complex, crowded version tree. The new **Ancestry** button in the Version Browser allows the user to select a version in the display and then toggle between displaying only the ancestor versions of the selected version (along with related virtual versions) and displaying all of the element’s versions. The **Show Ancestry** context menu item enables the user to continually refine the display by viewing the ancestors of one version, then the ancestors of one of those ancestors, etc.

### Stream Browser Performance

AccuRev 7.0 accomplishes a significant improvement in Stream Browser performance by implementing lazy rendering of versions in the Stream Browser display. As the user scrolls to different parts of the version tree, the versions in those parts are rendered in the display and then cached. This approach dramatically speeds up opening a Stream Browser in a depot that has thousands of streams.

### Rich Text Editor

A new rich text editor is included in AccuRev 7.0. It resolves some defects related to pasting text into the editor, and it supports the new Spell Checking feature.

### Spell Checking

Spell checking functionality has been added to the AccuRev GUI. A new AccuRev preference called **Enable Spell Checking** toggles spell checking functionality in Text- and Log-type issue fields and in the comment field for operations like Keep and Promote. Toggling the value affects tabs that are opened from that time forward; tabs that are already open are not affected.

### Spell checking functionality:

- Potential misspellings are highlighted by a red underline. The case of the first letter of any word is not significant during dictionary lookup.
- Spell checking can be done either from the context menu or by pressing the **F7** key to bring up a dialog.
- In rich-text fields, correcting a spelling error removes any formatting of the word.
- Users can define their own dictionaries and change the language used for spell checking. Currently supported languages are: English, German, Spanish, French, and Portuguese.

## Database Upgrade

AccuRev 7.0 upgrades the PostgreSQL version from 8.4.3 to 9.5.3. The *db* directory is no longer under the *storage* directory; instead, it is now located under *postgresql/9.5/*, conforming to PostgreSQL convention. After upgrading AccuRev to version 7.0, the system administrator must upgrade the database by running **maintain migratepg <db\_admin>**.

See the *AccuRev Administrator's Guide* for more information.

## Changes in AccuRev Release 7.0

AccuRev Release 7.0 includes the following new features and bug fixes.

**Note:** In cases where an issue is identified with two numbers, such as 26649 (1094789), the first number is the issue number in the AccuWork issue tracking system, and the second, in parentheses, is the issue number in the SupportLine system used by Customer Care.

### New License Manager

In AccuRev 7.0 the Reprise RLM license manager has been replaced with a new built-in license manager, which supports standard and flexible licenses. In order to upgrade to AccuRev 7.0, you must first obtain a new license file named *aclicense.txt*. For instructions on that procedure, see [Get an AccuRev License](#) on page 8.

See the *AccuRev Administrator's Guide* for a full description of license management in AccuRev 7.0.

### **24355 (609971) -- CLI: Hist command does not show filename that was 'removed' from the issue**

Output from the Hist command now includes the names of files that have been removed from an issue.

### **26649 (1094789) -- GUI: In the Schema Editor, removing a field can result in an invalid logic.xml file**

Previously, the GUI would sometimes behave erratically in the Queries tab if a schema field had been manually deleted from the schema.xml file. (*Manual changes to any of the AccuRev schema files are highly discouraged.*) With this release, the GUI instead writes an error log message to the GUI log and ignores any references to the manually deleted field.

### **33753 (1102274) -- xlink on xlink fails if both are snapshots**

Previously, when displaying the elements in a directory cross-linked to another cross-linked directory, where both are snapshots, the status of the elements was displayed as "no such element". With this release, the correct status of those elements is displayed.

### **34936 (1095751) -- RFE: Request for way to disable Admin Menu button on Web GUI toolbar**

One can now hide the "Admin" menu in the WebUI toolbar by adding a "disableAdmin" tag inside the "security" tag in the wui\_config.xml file and then restarting Tomcat. An example of the new "disableAdmin" tag:

```
<security>
  <userName minLength = "0" minDigitCount = "0" minLetterCount = "0"/>
  <password minLength = "0" minDigitCount = "0" minLetterCount = "0"/>
  <disableAdmin>true</disableAdmin>
</security>
```

### **35176 (1096053) -- RFE: Use stream names in the WebUI rather than stream numbers**

The WebUI issue form now displays stream names instead of stream numbers in the Version and Basis Version columns of the Changes tab.

### **35350 (1096166) -- RFE: Ability to add a user to multiple groups via a single CLI command**

The CLI "addmember" command now supports adding a member to multiple groups. The group names must be specified in a comma-separated list that is the last argument of the command.

### **35818 (1096586) -- GUI: AccuWork query for dates has issues when comparing against current date**

Previously, for a Timestamp-type field with a granularity of days, an "is before or equal to" comparison of the field against "CUR\_DATE" would not yield the proper results. With this release, the comparison is done correctly.

### **35839 (1096610) -- GUI: Pasting text into a rich text field in AccuWork destroys existing layout of the field being pasted into**

A new WYSIWYG editor has been introduced in AccuRev 7.0. Pasting text into a rich text field no longer inserts extra line breaks into the text.

### **37473 (1099867) -- GUI: Pasting text that starts with a slash '/' fails in text and log fields**

A new WYSIWYG editor has been introduced in AccuRev 7.0. Pasting in text that starts with a slash causes no problems.

### **39139 (1101999) -- Correct directory element not showing after defuncting evil twin directory**

Previously, after defuncting an evil twin directory and promoting it to the backing stream, the backing stream's Stream Explorer still showed the defuncted directory element, with a status of "(twin)(member)". With this release, the Stream Explorer shows the directory element that was not defuncted.

### **39235 (1102322) -- GUI: Version Browser displays the wrong issue number**

Previously, under certain circumstances, the Version Browser would display only the last few digits of an issue number associated with a version. With this release, the full issue number is always displayed.

### **39250 (1102389) -- GUI: Diff Prev Trans opens diff with wrong version**

Previously, executing "Diff Prev Trans." on the first version of a file in a stream would sometimes bring up a Diff window comparing that first version with another version of the file. With this release, that operation will result in a dialog window saying "Previous transaction cannot be found for selected version."

### **39540 (1103182) -- User did a revert on a link from a replica and it crashed the server**

The server used to crash if this sequence of operations was executed: Link to a file (via "accurev ln"), promote, change the link to point to a different file, promote the link again, then revert the last promote in the backing stream. With this release, the Revert operation executes successfully.

### **39568 (1103306) -- AccuRev is reporting a protocol mismatch when client runs out of disk space**

The error message has been improved. It now reads:

"A problem occurred writing to the file system. There is not enough space on the disk."

### **41134 (609864) -- RFE: Request to have timestamps in Postgres log by default**

A timestamp is now added to each record in the postgresql\*.log file.

### **41140 (1095548) -- RFE: Stream Favorites search should be case-insensitive**

The Create/Edit Stream Favorite dialogs and the Find dialog in the Stream Browser now have a "Case-Sensitive" checkbox that controls whether searches are case-sensitive or case-insensitive. The setting of this checkbox is sticky, and it is shared across the Create, Edit, and Find dialogs.

### **41161 (1104364) -- RFE: Request to be able to view and interact with issue 0**

AccuRev 6.x removed the ability for users to view and to promote changes against issue 0. AccuRev 7.0 restores the ability to promote changes against issue 0, either from the command line or in the GUI, as a way of indicating that the changes are not associated with any issue. It is not possible to view issue 0 in AccuRev 7.0.

### **41231, 43104 (1104539) -- RFE: Stream history menu option to use time model in addition to transactions**

Previously, the History Browser's "Show:" menu listed options for 20 transactions, 50 transactions, 100 transactions, and "Everything". AccuRev 7.0 supports additional options -- 1 month, 3 months, and 6 months -- allowing the user to specify the amount of history to see as a number of months.

### **41266 (1103111) -- RFE: Upgrade tomcat used by WUI (to Tomcat 8.0.33)**

The AccuRev 7.0 WebUI is installed with and runs on Tomcat 8.0.33.

### **41799 (1100524) -- Values are not populated to trigger parameter file for Revert action**

For the Revert operation, the stream name and change package ID are now passed in the trigger parameter file so that they are available to the trigger.

#### **41802 (1096649) -- CLI: anc -1 -v returns an invalid version number**

Previously, if the command “anc -1 -v” was executed for the first version of a file in a stream, an invalid version number would be returned. With this release, the correct answer of “0/0” is returned.

#### **41807 (1102080) -- RFE: Isrules '-fmx' option to be used with -d command option**

The "Isrules" command now supports the use of the "-d" option with the "-fmx" option to list only the rules that were explicitly set for the workspace (or stream), excluding rules that are inherited from higher-level streams.

#### **41812 (1101574) -- RFE: Ability to use more than one type when using the -k switch with the hist command**

The CLI "hist" command now supports specifying multiple types of transactions. The transaction types must be specified in a comma-separated list after the "-k" option flag.

#### **41814 (1102504) -- GUI: Search button not active on Find box**

Pasting text into the Stream Browser's Find text box now enables the Search button properly.

#### **41816 (1103844) -- RFE: Annotate from Active Transaction/History view in GUI**

The Annotate command has been added to the context menu of the Versions pane (the lower pane) in the History Browser.

#### **41903 (621027) -- GUI: No label on CPK Dialog Box for Issue field**

In the "Send to Issue" operation, the issue number field in the "Select Issue (Change Package)" dialog used to be unlabeled. Now the field is labeled "Issue:".

#### **43422 (1106840) -- Core: show streams performance issue because of extended backing stream info on passthrough streams**

The performance problem has been resolved. The "show streams" command now builds stream hierarchy information only for the Demote operation, which requires that information.

#### **43895 (1107122) -- GUI: Remove logback.xml from fw.jar**

The logback.xml file has been removed from the fw.jar file and is now installed directly in the `<ac-install>/bin/` directory.

## **Corrections and Changes to the Documentation**

Please note the following corrections and changes to the AccuRev 7.0 documentation.

#### **25496, 43031 (1100525) -- DOC: Trigger documentation needs improvement**

Appendix B, "Trigger Commands and Parameters", has been added to the Administrator's Guide. It lists the parameters that are passed to `trig_server_all` and `trig_server_preop` for each command.

#### **36259 (1097551) -- DOC: hist option -f3 missing from the hist man page**

The Help page for the "hist" CLI command now describes the -f3 option.



### **37124 (1103084) -- DOC: Add documentation about the ability to set max size of files within AccuRev**

In the 7.0 Administrator's Guide, the section called "Server-Side Triggers" describes the ability to enforce a maximum file size for the "add" and "keep" commands. An example is provided in the `server_preop_trig.pl` sample file, which is installed in the AccuRev examples folder. The sample trigger file defines a maximum file size and compares that to the file sizes that AccuRev passes in as parameters to the trigger file.

### **39773 (1103740) -- DOC: CLI - mkuser doc page is missing GitCentric in the "Description" field for a "full" license**

The mkuser doc page has been corrected.

### **39797 (1103792) -- DOC: 6.2.2 client install fails with "api-ms-win-crt-runtime-l1-1-0.dll is missing" error**

The System Requirements have been amended to state that Windows 7 SP1 is required. SP1 resolves the missing dll error.

### **42016 (1105390) -- DOC: Document support for custom user properties that was introduced in 6.2.3**

Discussion of custom user properties and other enhanced user management features (group-type issue fields, new validation actions, forward matching) has been added to these sections of the documentation:

- "setproperty" in the *CLI User's Guide*
- "The History Browser" in *On-Line Help*
- "Schema Tab" in *The Schema Editor*
- "Validation Tab" in *The Schema Editor*
- "Working with Issues" and "Issue Form" in *AccuWork*

## **Known Issues**

This section describes known issues in AccuRev and in the AccuRev Web UI.

### **Known Issues in AccuRev**

#### **GitCentric server is incompatible with AccuRev 7.0**

GitCentric releases from 2015 and earlier are not compatible with AccuRev 7.0. An upcoming release of GitCentric will resolve the incompatibility. If you have GitCentric Server, we recommend that you wait for the next release of GitCentric before you install AccuRev 7.0.

#### **Upgrade install ignores user-entered configuration information**

During an upgrade install (i.e., an install on top of an existing AccuRev bin directory), the installer prompts the user to enter the same configuration information that it asks for during a fresh (non-upgrade) install. However, for an upgrade install, the information entered by the user is actually ignored, and the installer instead uses the values that are already stored in the `<ac-install>/bin/acserver.cnf` file.

## **Cannot upgrade AccuRev client on macOS**

macOS: Because the package name for the client installer has changed from AccuRev to AccuRevClient in 7.0, there is no way to upgrade earlier macOS clients. Uninstall the previous client (or simply discard the Applications/AccuRev directory) and do a fresh install of AccuRevClient 7.0.

## **No master license server in AccuRev 7.0**

AccuRev 7.0 has replaced the standalone Reprise License Manager (RLM) with a new license manager directly built into the AccuRev server. A side effect of this change is that each master AccuRev server now needs to be issued its own license file.\* The issue of a master license server will be addressed in a future release of AccuRev.

\*(Replica servers do not need their own license files; they get licenses from their master servers.)

## **Issues synced to JIRA show HTML formatting tags in rich text issue fields**

Because of the new rich text editor control used in AccuRev 7.0, rich text issue fields that are edited in AccuWork display HTML formatting tags in JIRA after the issue is synced to JIRA. If users commonly use JIRA to edit issues, the impact is minimal. However, if users mostly use AccuWork to edit issues, we recommend upgrading to AccuSync 2016.2 in order to reduce the number of tags that are visible in JIRA.

## **Issuelist incorrectly marks an issue as incomplete if a defuncted element was promoted to the backing stream**

The “issuelist” command incorrectly marks an issue as incomplete if all of the following are true:

1. The stream hierarchy has cross-links in it
2. The issue contains a defuncted element that has been promoted to the current stream’s backing stream
3. Other changes for the issue are still active in the current stream

In this scenario, the defuncted element is incorrectly labeled as "missing".