

Micro Focus®
ONWEB
WEB-TO-HOST

Administrator Guide



**OnWeb Web-to-Host version 6.0
Administrator Guide**

November 2009

Copyright © 2009 Micro Focus (IP) Ltd. All rights reserved.

Micro Focus (IP) Ltd. has made every effort to ensure that this book is correct and accurate, but reserves the right to make changes without notice at its sole discretion at any time. The software described in this document is supplied under a license and may be used or copied only in accordance with the terms of such license, and in particular any warranty of fitness of Micro Focus software products for any particular purpose is expressly excluded and in no event will Micro Focus be liable for any consequential loss.

Micro Focus, the Micro Focus Logo, Micro Focus Server, Micro Focus Studio, Net Express, Net Express Academic Edition, Net Express Personal Edition, Server Express, Mainframe Express, Animator, Application Server, AppMaster Builder, APS, Data Express, Enterprise Server, Enterprise View, EnterpriseLink, Object COBOL Developer Suite, Revolve, Revolve Enterprise Edition, SOA Express, Unlocking the Value of Legacy, RUMBA, ViewNow, OnWeb, and XDB are trademarks or registered trademarks of Micro Focus (IP) Limited in the United Kingdom, the United States and other countries. IBM®, CICS®, AS/400® and RACF® are registered trademarks, and IMS™ is a trademark, of International Business Machines Corporation.

This list is not exhaustive. Citrix is a registered trademark in the U.S. and other countries of Citrix Systems, Inc. UNIX is a registered trademark in the U.S. and other countries, licensed exclusively through X/Open Company Limited. All other trademarks are the property of their respective owners.

Corporate Headquarters

United Kingdom

Micro Focus
Old Bath Road
Newbury , Berkshire RG14 1QN
UK
Web site: www.microfocus.com

United States

9420 Key West Avenue
Rockville, MD 20850
USA

Technical Support

Visit the Micro Focus SupportLine website at <http://supportline.microfocus.com> to raise and manage your support incidents, search the Knowledge Base, and download the latest product updates and fixes.

Table of Contents

Chapter 1:	Product Overview	1
	Components	1
	Pro	2
	Java	3
	Architecture	4
	Security	5
	Licensing	6
	Finding information	6
	Contacting Micro Focus	7
	Sales	7
	Support	7

Chapter 2:	Server Installation	9
	System requirements	9
	Installing	10
	Windows based web server	10
	Non-Windows web server	11
	Evaluation product	14
	Directory structure	15
	Session Configuration Manager	16
	Troubleshooting	16
	Uninstalling	17
	Windows servers	17
	Non-Windows server	17
	From Console	17

Chapter 3:	Creating and Migrating Client Profiles	19
	Migrating client profiles from a previous version	19
	To migrate profiles after upgrading	20

To run the Conversion Utility	20
Migrating PC-to-Host profiles.	21
PC-to-Host Profiles Supported	21
To import profiles using SCM	22
Creating client profiles	23
To create or edit a client profile	23
Configuring client profiles	24
Start options	24
Multiple sessions	26
International client sessions	27
Java Web Start	32
Publishing client profiles to users.	34

Chapter 4: OnWeb Client Installation 35

System requirements	35
Client operating system	35
Client browser	36
Host requirements	36
Client install and upgrade	36
Installing Pro.	37
Installing Java	38
Client uninstall	39
Uninstalling Pro	39
Uninstalling Java	39
Uninstalling Session Configuration Manager	40

Appendix A: Coexistence: Pro and PC-to-Host 43

Coexistence requirements	43
Setting a custom install path	44
Upgrading Pro and PC-to-Host software	44

Appendix B: User Profile Configuration 47

Rules defining Pro behavior	47
No user configuration (.cph) file exists.	48
Existing user configuration (.cph) file.	48



User configuration files in a distribution package 48

Appendix C: Running Web-to-Host from OnWeb 51

OnWeb server installation 51
 To install OnWeb Web-to-Host 51
 To remove OnWeb Web-to-Host 52
 Working with Web-to-Host profiles 52
 To run the SCM utility 52
 Using the SCM utility in OnWeb 52
 To migrate Web-to-Host profiles 53

Appendix D: User Data File Locations 55

Roaming profile support for Pro and Java sessions 55
 Default paths for user data files 56
 Pro sessions using Internet Explorer 56
 Java sessions using Internet Explorer 56
 Java sessions using Firefox 56

Appendix E: Using DOS HLLAPI 57

About DOS HLLAPI 57
 To run a DOS HLLAPI application 57
 Troubleshooting 58
 To verify registry entries for DOS HLLAPI 59
 DOS HLLAPI error messages 60

Appendix F: Creating a Trace 61

Setting trace in Java Sessions 61
 Setting trace in Pro Sessions 62

Index 65



Table of Contents



OnWeb[®] Web-to-Host is a server-based Web application that publishes your existing legacy applications in intranet, extranet, and Internet environments. It includes host display, printer, and file transfer features that enable end users to work productively with host-based information in a familiar Windows or web browser environment. OnWeb Web-to-Host provides access to a broad range of host types, including IBM[®] mainframe, IBM AS/400[®], DIGITAL[®] VAX, UNIX[®], and HP[®] systems.

Although it can be installed as a standalone product, OnWeb Web-to-Host is part of the Micro Focus Solutions, a common underlying framework that integrates host systems, desktops, browser-based systems, and wireless devices to new Web-based solutions. This guide describes the OnWeb Web-to-Host standalone version.

For more information on Micro Focus Solutions, visit the Micro Focus web site (<http://www.microfocus.com>).

System administrators can use the Session Configuration Manager (SCM) utility to easily configure client sessions that can be published to end users.

Components

OnWeb Web-to-Host includes these components:

- Pro
- Java™

While both components provide users with display and printer capabilities for mainframe and mid-sized hosts, they have different feature sets and use different technologies to connect workstations to host data.

Pro

Designed for use in an intranet environment, the Pro component offers the richest feature set and consists of ActiveX[®] controls that give users access to mission-critical host applications and data. The Pro component provides these client session types:

- Mainframe Display, Mainframe Printer
- AS/400 Display, AS/400 Printer, AS/400 File Transfer
- UNIX Display
- HP Display

Pro client sessions include these advanced features and options:

- Mainframe file transfer (can include SimXfer tables)
- AS/400 File Transfer
- AS/400 Batch file transfers
- Macros
- Hotspots
- User profile enhancements
- Restricted user support
- An MSI packaging utility for automatically installing Pro components
- A distribution utility
- A download and install service
- VBA-type scripting
- Customizable Menus and Toolbars
- End-user keyboard mapping
- Administrator keyboard mapping
- Tracing

Hotspots, a word or set of characters on the host screen, activate a function when clicked. Using the Hotspots Configuration dialog box you can enable/disable, show/hide, create, and modify both the default and user created



hotspots. Default hotspots are host commands displayed on-screen. User created hotspots are custom macros you assign to selected on-screen text. You can also use hotspots and macros to log on to and run host applications automatically. Any protected text on your host screen can be turned into a hotspot. In Mainframe displays, you can also configure hotspots for non-protected text.

Pro AS/400 File Transfer moves files and data between the host and the PC using either the menu bar or toolbar options of the AS/400 Display. A customized toolbar button activates a pre-configured FTX file and starts the AS/400 FTX application. A new AS/400 emulation type has been added to the SCM Wizard. It opens the AS/400 FTX application and loads an existing FTX configuration on the client. Your users can customize the file transfer session, configuring options such as the data format for both sending and receiving, file locations, application behavior both during and upon completion of the transfer, security settings, and host connection.

With the User Profile enhancements included in this release user configuration files (.cph) are no longer deleted automatically when changes are made in the HTML files for the configurable options. For more information, see [Appendix B, “User Profile Configuration”](#).

Pro ActiveX components are downloaded to the client once, during the first login. A new download service is first installed on the client workstation. Once the service is installed on the client all users (including restricted users) can work with the Pro ActiveX controls. The service handles all installs, upgrades, and downloads of Pro ActiveX components.

OnWeb Web-to-Host Distribution Packager enables you to bundle multiple Web-to-Host configuration and data files into a single, easily distributed package. Users can run sessions that include a complete work environment with components such as pre-defined scripts, macros, hotspots, custom toolbars, background images, icons, screen/font colors, AS/400 File Transfer and Batch File Transfer profiles (for Web-to-Host Pro sessions). OnWeb Web-to-Host Distribution Packager helps you provide standardized functionality and a single look and feel for all users. For more information, see the online help provided with the product.

Java

The Java component can be used in all environments (Internet, intranet, and extranet), and consists of Java applets (built using JavaBeans™) compatible with JDK level 1.1 and higher. The Java component includes these client session types:

- Mainframe Display, Mainframe Printer

- AS/400 Display, AS/400 Printer, AS/400 File Transfer, AS/400 Batch File Transfer
- UNIX Display

Java client sessions include these advanced features and options:

- Mainframe file transfer
- Macros
- Toolbar
- Status bar
- 3D display
- Hotspots
- Color mapping
- End-user keyboard mapping
- A distribution utility
- Administrator-configured keyboard mapping
- Tracing
- Configurable custom options

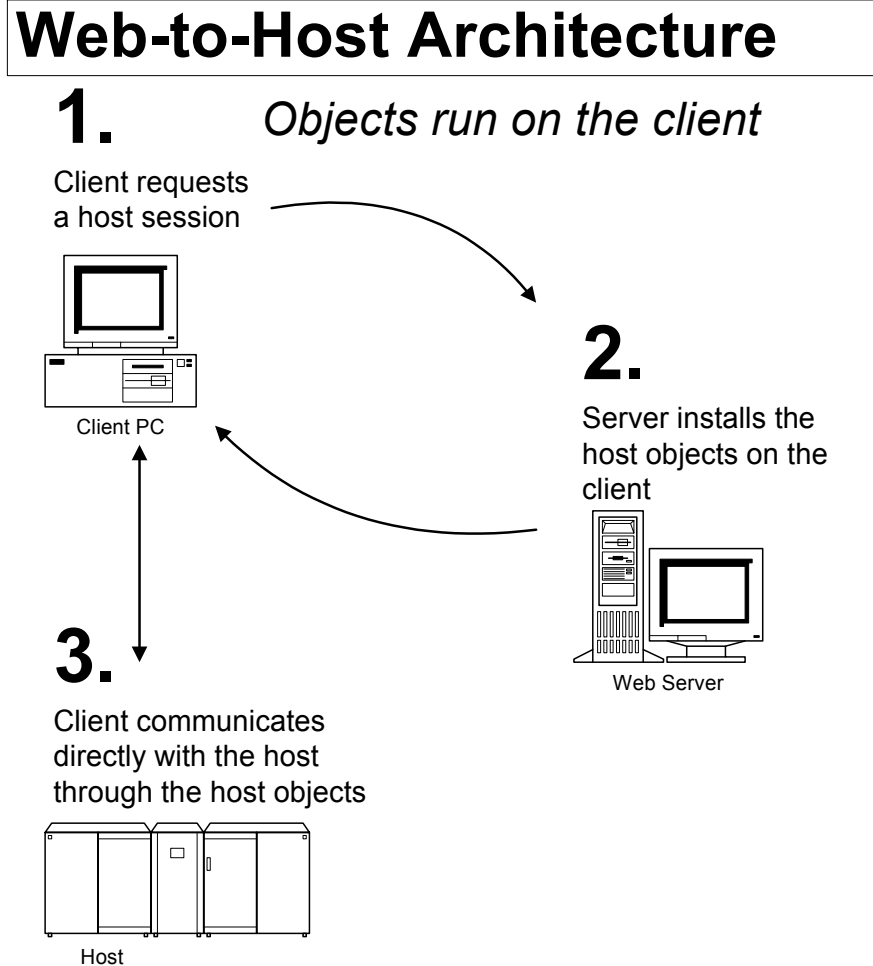
The Java applets are downloaded to the client once, during the first login; thereafter they operate on the browser system directly with only checks against the Web server for new versions or updates. No other downloads are required until you upgrade the Java component.

Architecture

Figure 1-1 depicts how OnWeb Web-to-Host works once the system administrator has created the host sessions and published them to users. The following sections describe how this architecture is applied to each of the component types.



Figure 1-1 OnWeb Web-to-Host architecture



The ActiveX objects and JavaBeans are downloaded to the client the first time a user opens a session. When you install updates on the server, they are downloaded automatically to the client the next time a user opens a session. This architecture enables the client to communicate directly with the host, as shown in [Figure 1-1](#).

Security

OnWeb Web-to-Host maintains persistent client-to-host sessions. It is important that users be aware of session persistence in relation to information security, especially when sessions are configured to run inside a browser window. In this mode, only one session is visible on the screen at a time, though other sessions could be running in the background. Host sessions run in the background when a user clicks the Back button on their browser, selects

a new URL from the browser's history list, or enters a new Internet or internal web address.

Users who have access to sensitive information on host systems should consider running each session in a separate window to keep all concurrent sessions visible on the screen. Users can also ensure that all connections are severed by closing their browser when they leave their work area. For details on configuring sessions to run in a separate window, see [“Run in a Separate Window” on page 25](#).

OnWeb Web-to-Host now supports SSL (Secure Socket Layer) for IBM Mainframe, AS/400, and UNIX hosts. It also supports SSH (Secure Shell) for Pro UNIX Display and Kerberos authentication for AS/400. With the addition of this security support, users can securely access applications and transfer data between their desktops and mainframe, AS/400 and UNIX systems, encrypting the session data stream to a host capable of supporting these protocols.

Licensing

To install OnWeb Web-to-Host, the system administrator must accept the terms of the license agreement. The purchase contract specifies the number of per seat licenses (the number of users who install Web-to-Host on a designated computer. The Licensing Agreement defines a “Designated Computer”).

Finding information

OnWeb Web-to-Host product documentation includes:

- This Administrator Guide, which explains how to install, uninstall, configure, and deploy the product.
- The Readme file, which contains information about new features, late-breaking changes, and known issues. The Help tab of the Session Configuration Manager contains links to the Readme file and this Administrator Guide.
- Context-sensitive help for the Session Configuration Manager, a utility for configuring Pro and Java client sessions.
- User Guides for Pro and Java clients. These online help files for end users explain how to configure and run features and options in the client session.



Contacting Micro Focus

If you have a question about OnWeb Web-to-Host software, first consult the product documentation. You can also find technical bulletins on the World Wide Web at <http://supportline.microfocus.com>.

Sales

To purchase additional licenses and products, contact your Micro Focus sales office. For the most current contact information, including our international offices, visit our Web site at www.microfocus.com.

Support

When contacting Technical Support, try to include the information below, if you have it. The more information you can give, the better SupportLine can help you.

- The name and version number of all products that you think might be causing a problem.
- The product serial number from the back of the disc sleeve.
- Your computer make and model.
- Your operating system version number and details of any networking software you are using.
- Your Software Support Identification Number (SSIN) if you have one (not used in all countries).
- If you are reporting a protection violation you might be asked to provide a dump (.dmp) file.
- Alternatively, you might be asked to provide a log file created by the Consolidated Tracing Facility (CTF) - a tracing infrastructure that enables you to quickly and easily produce diagnostic information detailing the operation of a number of Micro Focus software components.



To deploy OnWeb Web-to-Host software, you must complete these three tasks:

1. Install the product on a web server.
2. Run the Session Configuration Manager (SCM) utility to create and configure (or migrate) session profiles.
3. Publish session profiles to clients.

Your product DVD installs the Web-to-Host files in a **w2hlegacy** directory (created during installation) that must reside in a web-publishable directory on your server. The web server can then publish OnWeb Web-to-Host software to client workstations using the HTTP protocol.

This chapter describes how to install and remove OnWeb Web-to-Host as a standalone product on your web server. To install OnWeb Web-to-Host from the Solutions DVD, see [“To install OnWeb Web-to-Host” on page 51](#).

System requirements

- The web server on which you install OnWeb Web-to-Host can be any HTTP based server, such as a Windows web server, a UNIX server, an AS/400 (iSeries), or a mainframe (zSeries) computer.
- You must configure this web server to allow downloads of executable files to the client. If the web server is a Microsoft® Internet Information Server (IIS) or a Microsoft Personal Web server, execute permissions must be turned off for the server directories that contain the Web-to-Host client **.exe** files. See your web server documentation for instructions.
- You should install OnWeb Web-to-Host software in the root publishing directory of the web server, or in a sub-

directory configured on the web server. Otherwise, the product will not function. For details, consult your web administrator or your web server documentation.

- For Microsoft IIS, this directory is usually **c:\Inetpub\wwwroot**
- For Apache Server, this directory is usually **c:\Program Files\Apache Group\Apache2\htdocs**
- This version of OnWeb Web-to-Host supports both Java 1 environments (which includes the JDK 1.1 Patch) and Java 2 environments (Sun Java VM version 1.3.1 and higher). This allows you to use the Session Configuration Manager utility (used to create and migrate client profiles) on either Microsoft Internet Explorer (IE) 6.0 and later or Mozilla Firefox[®] (was Netscape Navigator[®]).

Installing

This section describes server installation procedures for OnWeb Web-to-Host as a standalone product.

- Installing on a Windows based web server
- Installing on a non-Windows web server
- Installing from the console
- Installing and migrating an evaluation product

Windows based web server

Follow these steps to install OnWeb Web-to-Host on a Windows based web server (Windows Server 2003 (SP1 and above), Windows Server 2008).

1. Insert the product DVD.
The setup program should start automatically. Click on the **On Web Web-to-Host 6.0** link in the main menu, and then choose **Install On Web Web-to-Host 6.0**.
2. Click the link to **Install OnWeb Web-to-Host**.
3. Read the introductory information, then click **Next**.
4. Read the **Software License Agreement**, select the option to accept the terms of the license agreement, and then click **Next**.



5. Enter the license key for your OnWeb Web-to-Host product, then click **Validate**.
6. Specify the **Web Root Directory** (this can be the root publishing directory of your web server or any subfolder under the web root), then click **OK**.
 - For IIS web servers, the **Web Root Directory** defaults to **c:\InetPub\wwwroot**.
 - For Apache Server, the root publishing directory defaults to **c:\Program Files\Apache Group\Apache2\htdocs**.
 - For other web servers, browse to the root publishing directory of the web server.

The setup program creates a new **w2hlegacy** directory under the root publishing directory (or the destination directory) and begins copying files to that directory.

To install to a subfolder, select **Enable subdirectory support** and enter the path in the box provided.

When finished, the **Installation Complete** screen appears. (See “[Directory structure](#)” for an overview of what the correct installation should look like.)

7. Click **Finish** to exit the installation.

Non–Windows web server

OnWeb Web-to-Host can be installed on any non-Windows server that has a JAVA run-time environment and a web server.

The following section provides instructions for installing an iSeries system.

iSeries

To support OnWeb Web-to-Host the following software must be installed on your iSeries system:

- 5722-SS1 Option 12 - Host Servers on V5RX
- 5761-SS1 - Host Servers on V6RX
- 5722-DG1 - IBM HTTP Server on V5RX
- 5761-DG1 - IBM HTTP Server on V6RX

- 5722-JV1 JVM 1.5 on V5RX
- 5722-JV1 JVM 1.6 on V6RX

For best performance, it is highly recommended that you use the installation directory specified in this procedure.

1. Log on to the iSeries. The Main Menu appears.
2. Type **QSH** and press **Enter** to access QShell.
3. Insert the DVD containing the Web-to-Host for iSeries software and type the following command:

```
CD /QOPT/<volume name>
```

4. Press **Enter**. The iSeries accesses the DVD root directory.
5. Navigate to the DVD directory:
`<DVD root>/onweb_w2h/bin`

This is the location of the install file, **setup.jar**
6. To begin installation, follow the instructions outlined below in [Installing from the console](#).
7. After installation you are ready to run SCM. For details on using the SCM utility, see [“Creating and Migrating Client Profiles” on page 19](#).

Installing from the console

OnWeb Web-to-Host can also be installed from the console (known as console mode) on both Windows and non-Windows web servers. The command line options you enter depend on whether you are installing to the default destination directory or to any other directory configured on the web server.

If you need to change the license key, you must first uninstall Web-to-Host and then reinstall it with the new key. If you do not enter a license key, setup installs a 30-day evaluation version.

► To install to the default destination directory

1. Enter:

```
<system drive>:java -jar -DLicenseKey=<license key>  
setup.jar -console
```
2. Follow the instructions that appear during the installation.

3. When installation is complete, you will be prompted for a response. Press **3** to exit the installation.

For example, if the default directory is C:\Inetpub\wwwroot then OnWeb Web-to-Host is installed in C:\Inetpub\wwwroot\w2hlegacy.

Note: When you install OnWeb Web-to-Host on either Microsoft IIS or Apache Server, it is installed to their default directory. Otherwise, it is installed in the same directory as **setup.jar**.

► To install to any other destination directory

When installing to a non-default directory, you must enter the web root directory parameter. If you want to install to a subdirectory under the web root, you must also enter the subdirectory parameter, however, this is optional.

1. Enter:

```
<system drive>:java -jar -DWebRootDir=<directory name>
-DSubDirectory=<subdirectory name> -DLicenseKey=<license
key> setup.jar -console
```

2. Follow the instructions that appear during the installation.
3. When installation is complete, you will be prompted for a response. Press **3** to exit the installation.

For example, to install OnWeb Web-to-Host to directory C:\InetPub\wwwroot in subdirectory w2h6.0\install you would enter:

```
<system drive>:java -jar -DWebRootDir=C:\InetPub\wwwroot
-DSubDirectory=w2h6.0\install -DLicenseKey=xxxx-yyyy-zzzz
setup.jar -console
```

Notes: When entering a subdirectory always use the format:

```
<FolderName>\<FolderName>
```

Parameters that include a space must be enclosed in quotation marks (“”), for example:

```
-DWebRootDir="C:\program files\wwwroot"
```

Unsupported non-Windows server

To install the product on an unsupported non-Windows server, you must first install the product on a supported platform (does not need to be a web or file

server), and then copy the files manually to the correct location on the non-Windows web server.

Copy (typically using FTP) the contents of the **w2hlegacy** folder and its subfolders to the root publishing directory of your web server (for the location of this directory, consult your web administrator or your web server documentation).

When using FTP to transfer files to an IBM OS/390 web server, be sure to FTP all files with file extensions .htm, .html, or .txt as text. Transfer all other files as binary. This is necessary because IBM uses the EBCDIC rather than the ASCII character set to store text files.

When all the files are copied, the installation is complete. (See [“Directory structure” on page 15](#) for an overview of what the correct installation should look like.)

Evaluation product

This section explains how to install and migrate the OnWeb Web-to-Host evaluation product. The evaluation product expires 30 days after you first install OnWeb Web-to-Host. After 30 days, users can no longer run their session profiles and are advised to contact their system administrator.

To install the evaluation product in graphic mode

To install the evaluation product on your web server in graphic mode, follow the appropriate procedure above, but instead of entering the license key, click **Evaluate**.

To install the evaluation product in console mode

To install the evaluation product on your web server from the console, follow the appropriate procedure above, but do not enter the `-DLicenseKey` parameter.

After installing the evaluation product (for all modes), you can create session profiles and begin your 30-day evaluation period by directing your browser to:

```
<webserver>/w2hlegacy/config/hostwizard.html
```

For details on creating and configuring profiles, see [“Creating and Migrating Client Profiles” on page 19](#).



To upgrade to a licensed product

1. Install the licensed version on top of your evaluation product. If you are running in console mode, first uninstall Web-to-Host and then reinstall it with the license key.
2. Run the Session Configuration Manager utility to migrate your evaluation profiles. Evaluation profiles expire after the 30-day evaluation period. When upgrading to the licensed product, you must also run all profiles created with the evaluation product through the Conversion Utility. For details, see [“To migrate profiles after upgrading” on page 20](#).

Directory structure

The installed product has the following directory structure within the `<webroot>\w2hlegacy\` root publishing directory:

Subdirectory	Description
config\	The configuration utility, hostwizard.html
data\	The sub-directories into which keyboard maps, scripts, macros, distribution packages, AS/400 FTX configuration, and watermark files are copied for all clients
help\	The online documentation (Help) files
images\	The graphics used by OnWeb Web-to-Host
java\	The download software for Java client connections
javascript\	The include files used for some JavaScript functions
pro\	The download software for Pro client connections
rss\	The software for secure connections
utils\	The Java Uninstall utility, MSI Packager, OnWeb Demo Server utility, and other useful utilities

Note: If you choose to place the user data files location outside the OnWeb WebToHost server installation folder, you must copy the file **web.config** from `w2hlegacy` to the new location. This is because the **web.config** file contains declarations of the MIME types to be allowed by IIS7.

Session Configuration Manager

After installing OnWeb Web-to-Host on your web server, the next task is running Session Configuration Manager (SCM) utility to create, edit, and migrate client profiles. To run this utility, direct your browser to this URL: `<webserver>/<destination directory>/w2hlegacy/config/hostwizard.html`

For details on using the SCM utility, see [“Creating and Migrating Client Profiles” on page 19](#).

Troubleshooting

This section summarizes the most common problems encountered when installing this product. There are links to the Readme file, for release-specific information, and this Administrator Guide on the Help tab in the Session Configuration Manager (SCM) utility.

Setup program does not run

Use the **Run** utility to access the disk and run the program **autorun.exe**.

In the main menu, click on the **On Web Web-to-Host 6.0** link, and then choose **Install On Web Web-to-Host 6.0**.

Session Configuration Manager is lost

If after installing the product you cannot find the Session Configuration Manager (SCM), you may have installed the product to the wrong directory (see previous problem). If the product is correctly installed and you still cannot find the SCM, then search for the file `hostwizard.html` in the root publishing directory. When you find it, note the URL for the SCM for future use.

Web server: SCM does not open

If you correctly installed the product and still cannot open the Session Configuration Manager (SCM) in your browser, you may have a case-sensitive file system. Verify that all the directories and file names for OnWeb Web-to-Host are in lowercase, enter the URL in lowercase, and try opening it again.

If you changed the product directory names from the default structure described in [“Directory structure” on page 15](#), the `<OBJECT>` tag's codebase property is incorrect and must be fixed in the HTML files:

1. First, back up the HTML files in the **config** directory.
2. Open each file with a text editor (such as Notepad) and edit the directory names.
3. Save each file as ASCII text.

Uninstalling

When removing OnWeb Web-to-Host from your network environment, you should also uninstall the product from all client machines. For details on this procedure, see [“Client uninstall” on page 39](#).

Windows servers

1. In the Windows Control Panel, double-click the **Add/Remove Programs** icon.
2. Select **OnWeb Web-to-Host 6**, then click **Add/Remove**.
3. Follow the prompts to remove the application.

Non-Windows server

- Open the */webroot* publishing folder on the web server, then delete the **w2hlegacy** folder and its contents.

From Console

► To uninstall from the default destination directory

1. Navigate to: *<Default install directory>***w2hlegacyuninst**.
2. Enter: **java -jar uninstall.jar -console**.

► To uninstall from any destination directory and subdirectory

1. Navigate to: *<webroot directory>/<subdirectory>*/**w2hlegacyuninst**.
2. Enter: **java -jar uninstall.jar -console**.



Creating and Migrating Client Profiles 3

After installing OnWeb Web-to-Host on your web server, the next task is to create or migrate client profiles. You may also want to edit client profiles to configure new options, such as security, distribution package, Pro toolbars and menus, and Pro watermarks.

This chapter explains how to use the Session Configuration Manager (SCM) utility to create, edit, and migrate client profiles and how to deploy client profiles to your users. The procedures in this chapter apply when installing and running OnWeb Web-to-Host as a standalone product on any web server.

Note: On a slow connection, the initial download for the SCM utility and the client session may take a long time. Consequently, OnWeb Web-to-Host may look like it is not responding when running the SCM utility or the client session for the first time.

Migrating client profiles from a previous version

After updating your OnWeb Web-to-Host product by installing a new release version or applying a TMP or Service Pack, you should migrate all session profiles created in the previous version by running the Session Configuration Manager in server mode. If you do not update these session profiles, the following problems may occur:

- Pro client sessions will not open. Users will see an error message prompting them to contact their system administrator.
- Java client sessions will not open and users will not see an error message.

For details on running the SCM utility in server mode, see [“Creating client profiles” on page 23](#).

To migrate profiles after upgrading

1. Run the SCM utility on the server by typing the following in the Address field of your browser:
http://<webserver name>/<subdirectory>/w2hlegacy/config/hostwizard.html
2. Do either of the following:
 - To quickly migrate profiles in batch mode, click the **Conversion Utility** tab, then follow the [“To run the Conversion Utility”](#) procedure below.
 - To convert and edit profiles individually, click the option to **Open an Existing Session or Import PC-to-Host Profile**, then specify the profile to edit. When prompted to convert the profile prior to editing, click OK. (For details on editing profiles, see [“Creating client profiles” on page 23](#).)

Both migration methods ensure that your OnWeb Web-to-Host software incorporates the most recent version numbers into the session HTML files. Once the new software is downloaded to the client workstations, the version numbers on client workstations and session files must match. If new parameters exist in the current product version that were not defined in the migrated profile, the OnWeb Web-to-Host uses the default values.

3. When the user opens a migrated profile, the browser displays a standard security dialog box asking if the user wants to install and run software from Micro Focus.

Administrators should tell their users to click **Yes** (for IE) or **Grant** (for Firefox).

To run the Conversion Utility

1. If necessary, run the Session Configuration Manager in server mode, then click the **Conversion Utility** tab. For details, see Steps 1 and 2 in the procedure above.
2. In the **Current Directory** box, type the drive and full path of the folder containing the session profiles to convert.



- To change directories, in the **Directories** box, double click either the double dot [..] or the directory names until you are at the desired directory.
 - To change drives, in the **Current Directory** box, type the drive letter followed by a colon (for example, **D:**), and press **Enter**.
3. In the **Files** box, select the files to convert. You can select one or more files and convert them simultaneously.
 4. Click **Convert**.
The Results box shows the status of the requested conversion(s) by denoting "Successful" or "Failed" next to the file name(s).
 - If the conversion is successful, the file is updated and the previous version is saved in the same directory with a **.bak** extension.
 - If the conversion failed, your browser's Java™ Console output screen (found on the Internet Explorer View menu or on the Netscape Window menu) contains an error message explaining why the conversion failed.
 5. To exit the Conversion Utility, close the browser.

Migrating PC-to-Host profiles

Moving from RUMBA PC-to-Host to Web-to-Host does not mean you lose profiles or that those profiles must be recreated. OnWeb Web-to-Host provides a migration wizard that makes upgrading fast and easy and allows you to continue using your old profiles. The migration wizard is part of the Session Configuration Manager.

PC-to-Host Profiles Supported

The migration wizard converts the following PC-to-Host profiles:

RUMBA Client	File Extension
MainFrame Display	WDM
MainFrame Printer	WPM
AS/400 Display	WDA
AS/400 Printer	WPA

RUMBA Client	File Extension
AS/400 File Transfer	RTO
AS/400 Batch Transfer	BTF
UNIX Display	WDU
HP Display	WDH

During the migration process, all relevant parameters are converted to either Java or Pro sessions and placed in the Session Configuration Manager.

Note: It is recommended that you migrate profiles on the computer where RUMBA PC-to-Host is installed. If you want to make the profiles available for other clients, you must manually copy the data files, keyboard maps, macros, and scripts to the Web-to-Host server.

To import profiles using SCM

1. Open the SCM utility in server mode.
2. Click the **Create or Edit Session** tab.
3. Select **Open an Existing Session or Import PC-to-Host Profile** and either enter the full path or click Browse to select the path of the file to import. When the file is imported the **Type** option, which displays the type of profile type imported, in the **Create New Session** box is dimmed, and the **Implementation** option is available.
4. From the **Implementation** drop-down list, select the client appropriate for the particular profile, for example, Java client or Pro Client.
5. Click **Go**. When the migration process is complete, the SCM opens with the imported data displayed in the relevant option boxes. For example, the IP address that was in the RUMBA PC-to-Host profile now appears in the IP address box of the SCM. If Web-to-Host requires a parameter not found in the imported profile, it uses the default value and displays a Migration Notification listing the parameters not found.
6. Once the profiles have been imported, assign a session name, save and continue editing as you would with any OnWeb Web-to-Host profile.



Creating client profiles

This section describes how to use the Session Configuration Manager to create a new OnWeb Web-to-Host client session for your users. The SCM utility saves your client configuration settings in an HTML file that invokes a named OnWeb Web-to-Host client session.

The standard method in which the system administrator creates and configures the session profiles is known as server mode. In this mode, the profiles must reside in a Web-published folder on the OnWeb Web-to-Host server. When the user opens a profile on the server, the client session is delivered to the desktop through the browser.

To run the SCM utility

Type the following in the **Address** field of your browser:

```
http://<webserver name>/<subdirectory>/w2hlegacy/config/  
hostwizard.html
```

To create or edit a client profile

This section explains how to use the Session Configuration Manager utility to create or edit client profiles.

1. Run the SCM utility on the server or on your local workstation.
2. Optional: For general instructions on using the SCM utility, click the Help tab. This tab also contains links to the Readme file and this Administrator Guide.
3. Click the Create or Edit Session tab, then do one of the following as needed:
 - **Create a new session.** Click **Create a New Session**, then select the Type (host emulation session type) and Implementation (Pro or Java client).
 - **Edit an existing session.** Click **Open an Existing Session**, then specify the full path of the HTML session configuration file to edit. The Browse utility defaults to the location of the last saved configuration file.

4. Click **Go!**
The tabs for the selected host type and technology implementation appear.
5. Optional: Click each tab, click ? at the bottom of the screen, and then print the help pages for each tab.
6. Configure the settings on each tab as needed.
 - For details on each field, see the online help. For details on configuring client start options, concurrent sessions, and multiple language support, see [“Configuring client profiles” on page 24](#).
 - The SCM utility displays an exclamation mark next to required settings, and provides many default settings. You need to enter only a few unique settings to make your connections work correctly; however, you should check each tab to be sure you select the appropriate options for your needs.
7. To save the profile, click the check mark icon at the bottom of the SCM utility.
OnWeb Web-to-Host generates the HTML file and displays the Save As dialog box.
8. Specify an appropriate folder in which to save the profile. In server mode, you must save the profile in a Web-published folder. Otherwise, client sessions will not receive automatic updates from the web server.

Note: In previous versions of OnWeb Web-to-Host updates from the administrator deleted all user configuration. In this release, there are cases when administrator changes do not automatically delete the user’s configuration (.cph) file. For more information, see [Appendix B, “User Profile Configuration”](#).

Configuring client profiles

This section describes some of the common options you can configure when creating or editing client profiles in the Session Configuration Manager utility. See the online help supplied with Session Configuration Manager for a complete list of options related to each technology.

Start options

These options are located on the **Session Options** tab when creating or editing client profiles in the Session Configuration Manager utility.



Run in a Separate Window

This option applies only to Pro and Java display profiles.

The **Run in a Separate Window** option opens the client session in a separate window outside the Internet Explorer browser. If the client browser is Netscape, the session opens in a new browser window instead.

You can also use this option to configure a **Pro display** profile to launch multiple standalone sessions using the same configured connection. For details, see [“Multiple sessions” on page 26](#).

The default is Clear; the host session runs inside the browser.

Server URL

With this option you have the ability to run sessions from a web server other than the default OnWeb Web-to-Host server. The URL you enter indicates the location of the alternate OnWeb Web-to-Host server.

Enable Local Start

This option applies only to client profiles created by running the SCM utility in server mode. For details on server mode, see [“Creating client profiles” on page 23](#).

The **Enable Local Start** option allows users to run host sessions when the web server is unavailable. With this option, whenever the user opens a client profile stored on the web server, OnWeb Web-to-Host software copies that profile to the client workstation. The profile resides on the web server as an HTML file that is named after the client session. The profile location on the client workstation varies, depending on the client type and the browser:

- **Pro sessions**
C:\Program Files\Micro Focus\Rumba\LocalStart
- **Java sessions**
C:\<user profile>\My Documents\Micro Focus\Rumba\JavaLocalStart

It is best to run client profiles from the server to ensure that users have the most up-to-date configuration and software.

When running Local Start profiles, help files are only available if, during configuration, the administrator selected: **Install User Guide locally**. Auto macro files and keyboard map files configured by the administrator are cached on the client workstation when the session is downloaded from the

server, so these local copies are accessible to the client session when the originating server is down.

By default, Local Start is not selected.

Multiple sessions

Users can run concurrent Web-to-Host sessions and switch between session windows to perform tasks. How users initiate multiple sessions and navigate between them depends on how you configure the session profiles. There are three scenarios:

- **Multiple sessions running in separate browser windows**
By default, users must open multiple instances of the browser to start multiple client sessions. Users can run concurrent host sessions and switch between sessions by clicking each browser window in turn.
- **Multiple sessions running outside the browser**
Administrators can configure **Pro** and **Java display** profiles to run in a separate window outside the browser (for details, see [“Run in a Separate Window” on page 25](#)). The user must open a new instance of the browser to launch another host connection, but once the new session is connected to the host, the browser can be closed without losing the connection.
- **Multiple Pro standalone sessions**
Administrators can configure a **Pro display** profile to launch multiple standalone sessions using the same configured connection. For example, a user can run two or more MyRUMBAHost sessions, each in its own window.

With this configuration, a new session opens in a separate window outside the browser whenever the user accesses a session URL through the browser window. After launching one or more session windows, users can close the browser without losing the host connection.

To configure multiple Pro standalone sessions

1. Create or edit or the Pro session profile in the Session Configuration Manager, then click **Session Options** tab.
2. Check both the **Run in a Separate Window** and the **Allow Multiple Standalone Sessions** options.
3. To save this configuration, click the check mark icon at the bottom of the utility.



When you enable these two options, users can launch a new session window using any method that requests the session URL. For example, if your Web site includes a Pro display session named **Display.html**, users can open multiple sessions by:

- **Clicking a link on a Web page.**
If the Web page includes a link to **http://<your site>/Display.html**, users can click this link to launch a new session window.
- **Refreshing the browser with the session URL listed in the Address (or Location) list box.**
When the browser's Address or Location box contains the session URL, users can click the **Refresh** (or Reload) button on the browser toolbar to launch a new session.
- **Typing the address in the Address (or Location) list box.**
If users have browsed to another location after opening the session, they can enter the session URL in the Address or Location box to launch another session window.
- **Recalling the address from history.** If users cannot remember the URL, they can open the browser's history list and then select the session URL to launch a new session window.

Users can switch between sessions by clicking each of the windows in turn, or by using the taskbar. If the browser closes, the session windows remain open.

International client sessions

This section describes how to configure profiles for international language support. When using the Session Configuration Manager utility to create or edit client profiles, configure these multilingual options to meet the language needs of your users:

- **Host Character Set** (for AS/400 and mainframe display and printer sessions). Sets the host language (also known as the code page).
- **UNIX character set options**. The **National Replacement Character Set** replaces certain ASCII characters with characters of the specified language. The **Supplemental Character Set** specifies the character set used by the host.

Note: There are no configurable character set options for HP display sessions.

- **Keyboard mapping options**. Sets the country or custom keyboard map for Pro and Java display sessions.
- **Client Locale**. Sets the language of the OnWeb Web-to-Host client user interface for display and printer sessions.

You can set these options to use different languages if necessary. For example, you can set the user interface to English and set the keyboard map and host character set to German.

Host Character Set

When configuring Pro and Java AS/400 and mainframe display or printer profiles, this option appears on the **Connection** tab.

To specify the Host Character Set, select the language character set (or code page) for the client session. If the host uses a non-English (United States) language, select the language used by the host.

The Host Character Set includes commonly used marks, accents, letters and symbols of a specific language. For example, if the host language is French, the Host Character Set must also be French to ensure that the special characters of French are correctly transmitted to the host and that the characters received from the host display correctly in the client session.

The default setting is English (United States) - 37.

UNIX character set options

When configuring a Pro UNIX Display, these options are located on the **Client Options 2** tab. When configuring a Java UNIX Display, these options are located on the **Character Set Options** tab.



Keyboard mapping options

OnWeb Web-to-Host supplies numerous country keyboard maps to accommodate the special characters and symbols used in various languages. You can deploy country keyboard maps in several ways. For example, you can standardize all the sessions on one country keyboard, or base the keyboard map on the client workstation's Regional Settings, or enable the user to specify their own keyboard mappings.

When configuring display profiles, the available keyboard mapping options vary, depending on the session profile type.

Pro display clients

When using the SCM utility to configure Pro AS/400, mainframe, UNIX, and HP display profiles, these options appear on the Keyboard Map and Auto Macro tab:

- Keyboard Map
- Custom Keyboard Map

You can select a standard country keyboard map or specify a custom keyboard map (**.map** file) for the client session. For details on this procedure, see the online help for the **Keyboard Map and Auto Macro** tab.

The Keyboard Map default is U.S.A. and the Custom Keyboard default is blank.

Note: To enable users to specify their own **Pro** keyboard map files, which override the administrator-specified keyboard map, see the online help for the SCM utility at the **Client Options** tab when configuring Pro display profiles.

Java display clients

When using the SCM utility to configure Java AS/400 and mainframe display profiles, these options appear on the **Keyboard Map and Auto Macro** tab:

- Custom Keyboard Map
- Keyboard Locale

When configuring Java UNIX Display profiles, these options appear on the Keyboard Options tab.

The default **Custom Keyboard Map** value is blank, and the client session uses a standard country keyboard map based on the **Keyboard Locale**. For details

on specifying a custom keyboard map (**.map** file), see the online help for the appropriate tab in the SCM utility.

The **Keyboard Locale** determines some default keyboard mappings for the client session. The default value uses a standard country keyboard map based on the **Client Locale** setting.

Note: To enable users to specify their own **Java** keyboard mappings, which will overlay the administrator-specified keyboard map, see the online help for the SCM utility at the **Tool Options** tab for Java UNIX Display profiles or the **Client Options** tab for Java AS/400 Display or Java Mainframe Display profiles.

Client Locale

When using the SCM utility to create or edit any profile (except Java UNIX profiles), this option appears on the **Client Options** tab. For Java UNIX profiles, this option appears on the **General Display Options** tab.

For Pro, and Java sessions, the **Client Locale** specifies the language for the OnWeb Web-to-Host client user interface, which consists of the session window (including ToolTips and the status bar), dialog and message boxes, error messages, and help.

The default value is English.

Multiple language scenarios

When running client sessions, users may need to view applications on an international host, require a different country keyboard map, or require the Web-to-Host client user interface in another language. These needs are met by configuring the [Host Character Set](#), [Keyboard mapping options](#), and [Client Locale](#).

Different companies have different international language environments and require different display and/or printer configurations. As such, it is impossible to provide a single procedure. This section lists possible multi-language scenarios to help you determine how to best configure the options for your international language environment.

In the following table, the first column lists the multilingual option, the second lists language scenarios, and the third lists the suggested OnWeb Web-to-Host settings. Note that there are multiple Keyboard listings because OnWeb Web-to-Host provides several keyboard mapping options. For details on individual settings, see the Help associated with the tab in the Session Configuration Manager.

Table 3-1 Possible language scenarios and suggested settings

Option	If	Then
Host language	The host uses a language (code page) other than English (United States)	In the Host Character Set option, select the language of the host
Keyboard	All clients are localized on one language	<p>Pro. In the Keyboard Map option, select the country keyboard map; or specify the full path of the Custom Keyboard Map file</p> <p>Java. Specify the Custom Keyboard Map file name or select the Keyboard Locale</p> <p>All clients use this keyboard map</p>
	Clients are localized on different languages as indicated by different Regional Settings (Control tab) on the client workstations.	<p>Pro. Select Use Client Regional Settings from the Keyboard Map option</p> <p>Java. Specify a blank Custom Keyboard Map option (default) and <Default> Keyboard Locale (default).</p> <p>Each client uses the keyboard map based on its Regional Settings.</p>
	Users need or want control over their own keyboard maps	Pro & Java. Enable end-user keyboard mapping. User-created keyboard maps override any country keyboard map specified in the Keyboard Map option.
Client user interface	The client user interface uses a language other than English and you want Web-to-Host to use the same language	Select the appropriate language from the Client Locale option. (<i>Note: OnWeb Web-to-Host supports English, French, and German.</i>)

Here are some other multi-language environments and suggested configurations:

- Clients connect to a host using the German language (code page) and their Regional Settings are set to German. In this scenario, you would set the client Host Character Set, country keyboard map, and client user interface language to German.
- Clients connect to a host using the English (United States) language (code page), but their Regional Settings are set to French (Canadian). In this scenario, you would set the client Host Character Set to English (United States), but the country keyboard map and client user interface language to French (Canadian).

- Clients connect to a host using the English (United States) language (code page), but some clients' Regional Settings are set to French (Canadian) and others to German. In this scenario, you would want to set the client Host Character Set to English (United States), deploy a country keyboard map based on the client's Regional Settings, and set the language of the client user interface to either French or German.
- Clients connect to a host using the Spanish language (code page) and their localization settings are set to Spanish. In this scenario, you would set the Web-to-Host host character set and the country keyboard map to Spanish. However, because Web-to-Host does not provide a Spanish client user interface, the client user interface language must be set to English, French, or German.

Java Web Start

Sun Microsystems Java Web Start Application Manager can now be used to manage Java sessions created in OnWeb Web-to-Host. Java Web Start enables users to be browser independent by running sessions in their own, separate window. (Users can also choose to run Java Web Start sessions via a standard browser.) With Java Web Start Application Manager, users can add and remove sessions from their workstation and create desktop shortcuts for quick access to individual host sessions.

When a session is run for the first time using Java Web Start, all files required to run the session are automatically downloaded and installed on the client workstation. After the first time, the application checks the server-side session (JNLP) file and Java applet version. Updated files are downloaded automatically when needed. If the server is unavailable when the check is performed, the session is run with the existing configuration.

Requirements

To run Java sessions with Java Web Start, you need:

- Sun's Java Runtime Environment (JRE) 1.5+.

If you want to run Java Web Start sessions through a standard browser, the Web server to which you published the Web Start sessions must recognize the .JNLP extension and MIME Type, **application/x-java-jnlp-file**. If the server does not already recognize this type of file, you must add it manually.

Adding MIME Types

For Apache servers:



1. From **Program Files**, browse to the **Apache\conf** folder.
2. Open the file **mime.types** in a text editor.
3. Add **application/x-java-jnlp-file** under **MIME Type** and **JNLP** under **Extension**.

For Windows 2003 servers with IIS 6 and for Windows 2008 Server with IIS7 this is done automatically by the OnWeb Web-to-Host installer.

When **hostwizard.html** is being opened, the following error may occur:
 "Cannot add duplicate collection entry of type 'mimeMap' with unique key attribute 'fileExtension' set to '.abc' "

If this happens the following line should be removed from the web.config file:

```
<mimeMap fileExtension=".abc" mimeType="xyz/uvw" />
```

Creating sessions for Java Web Start deployment

You can create Java Web Start sessions from scratch or from Web-to-Host HTML sessions. The reverse also applies if you want to create an HTML Web-to-Host session from a Java Web Start session.

1. Create or edit a Java session in Session Configuration Manager (SCM).
2. On the **Session Options** tab, select **Enable Java Web Start (Sun JVM only)**. (Clear the check box to create an HTML Web-to-Host session.)
3. In the box **URL folder**, enter the URL where you want to publish the session. (If you cleared the check box, this option is unavailable.)
4. Save the session.

Note: Java Web Start sessions should only be saved on a Web server. In addition, the full, legal, URL path to the location where you published the sessions must be entered in SCM. Sessions created using the localhost address, containing workstation names, or using an address obtained while browsing to the file, for example with Windows Explorer, will not function properly. Sessions can be saved, however, to any Web server, even those that do not have OnWeb Web-to-Host installed.

When a Java Web Start session is run, the JNLP file and associated applets are updated from the server, however, the session itself runs locally from the client workstation. Sessions run locally do not have access to online Help files unless you select the option **Install user guide** locally when creating the session.

Publishing client profiles to users

You can use any usual Web publishing method to publish session profiles created by running the SCM utility in server mode to users. For example, you can:

- Provide the URLs of the session profiles for users to enter in the Address box of their browsers
- Create an HTML page containing links to the sessions, and organize these links by host type or other useful groupings.



This chapter describes procedures that users must follow when installing, updating, or removing OnWeb Web-to-Host files on the client workstation.

If RUMBA[®] PC-to-Host software is installed on the client workstation, users should follow the procedures described in [“Coexistence: Pro and PC-to-Host” on page 43](#) instead, to ensure successful coexistence with OnWeb Web-to-Host.

System requirements

This section describes the minimum system requirements and configurations required for client workstations to run OnWeb Web-to-Host components.

Client operating system

OnWeb Web-to-Host supports these client operating systems:

- Windows 7
- Windows Vista
- Windows XP
- Windows 2003

Microsoft Windows Installer (MSI), an installation and configuration service, must also be installed on the client PC before installing OnWeb Web-to-Host Pro and advanced features of Java, such as native access.

If no MSI is on the client workstation, an error message is displayed. OnWeb Web-to-Host does not pre-install MSI. You can download the latest version, from:

<http://www.microsoft.com/msdownload/platformsdk/sdkupdate/psdkredist.htm>.

Client browser

OnWeb Web-to-Host supports these browsers:

- Internet Explorer 6.0 or later (for all OnWeb Web-to-Host components) with these features enabled:
 - ActiveX® and VB Script
 - Java and JavaScript™ , using Java SDK 1.0 or later
- Firefox (for Java components only) with these features enabled:
 - Plug-ins
 - Java and JavaScript™ , using Java SDK 1.0 or later
 - Smart Update

Host requirements

Java AS/400 File Transfer clients require the following AS/400 host software:

- Clients without SSL require OS/400 version V4R3 or later
- Clients with SSL require OS/400 version V4R4 or later

Client install and upgrade

This section describes how users install and update OnWeb Web-to-Host software when the client does not have RUMBA desktop software also installed. Users must follow these procedures the first time they open a Web-to-Host session, and repeat these procedures each time OnWeb Web-to-Host software is updated.

When the user initiates a Java session, the browser automatically verifies whether current OnWeb Web-to-Host files are installed for all host types. Installation procedures are specific to the client browser type. Pro sessions are installed through the Service Manager.



Installing Pro

Web-to-Host Pro components can be installed automatically using either the MSI Packager or the Service Manager.

OnWeb Web-to-Host MSI Packager is a new utility for Pro Clients that replaces both CD Image Creator and SetProInstallPath.exe. When integrated with the Service Manager it provides complete local start capabilities. With MSI Packager you create custom installations that can be deployed on restricted-user systems. You can add all of the Pro emulation types, SimXfer tables for AS/400 file transfer, RSS Client security, a VBA-type script engine, localized client Help, and distribution packages. For more information on MSI Packager, see the online *MSI Packager User Guide* supplied with the product.

Service Manager is installed on client workstations by a user with administrator rights. Once the Service Manager has been installed, it downloads and installs all Pro components regardless of user rights. The rest of this section describes installation using this component.

By default, all Pro files are installed in:
C:\Program Files\Micro Focus\RUMBA.

Note: Web-to-Host Pro is compatible with RUMBA PC-to-Host version 8.0 only. All other Web-to-Host components work with all versions of RUMBA PC-to-Host. For details on co-existence restrictions for the Pro component and RUMBA PC-to-Host, see Appendix A: [Coexistence: Pro and PC-to-Host](#).

Standard Install procedure

1. From the browser, run the session HTML created by the Session Configuration Manager (SCM). As Web-to-Host downloads and install a progress dialog is displayed.
2. Depending on your browser security settings, the **Security Warning** may appear asking if you want to install the Service Manager. Click **Yes** to run the install. Once the Service Manager is installed all necessary Pro ActiveX controls are installed and the session opens.

Note: There may be instances where a message appears in the browser window telling you to restart the computer. If it appears, click **OK**. After restarting, open Internet Explorer, click the extension you want to connect to, and proceed with your host session.

Silent Install procedure

As stated above, the standard Web-to-Host Pro installation displays a progress dialog while downloading and installing. However, it is possible to run a silent installation, that is, an install and download with no progress dialog displayed. To do so:

1. Navigate to `\w2hlegacy\config\productcfg.xml`, a file containing component descriptions and version numbers.
2. In the `<product _info>` section, change the `silent_install` property to **true**. By default it is set to false. After editing, `silent_install` should be: `<silent_install value="true"/>`.
3. After making the necessary change to `productcfg.xml`, follow the standard installation procedure.

Installing Java

The Web-to-Host Java component can be installed automatically on both Internet Explorer and Firefox clients. The installation procedure is the same for both browsers. If you encounter Java errors while installing OnWeb Web-to-Host, you may have an older browser that does not support JDK 1.1 and you might need to update to a newer browser version (see [“System requirements”](#) for more information).

To install Java on IE and Firefox

1. From your browser, log on to the web server, and click a session name to request a host session.
2. Depending on your browser security settings, the **Security Warning** dialog box may appear. Click **Yes** to run the install, and your host session appears.
3. Proceed with your host session.

Note: When installing on Internet Explorer, restricted users cannot install Java or its native print support DLL (NativePrint.DLL). However, once an administrator installs Java, restricted users can run a Java session. On Firefox, native print, and local help components must be installed by an administrator before they can be used by restricted users.



Client uninstall

You may occasionally need to uninstall Web-to-Host components and reinstall them to reload lost files and correct other system problems. File and directory names and locations to which Web-to-Host components are installed vary by component, browser type and version. As a result, the procedures for uninstalling Web-to-Host components are specific to each context, as described in the following sections.

Uninstalling Pro

Before uninstalling you must first close any open windows. Use the following procedure to uninstall the Pro component.

1. From your Windows desktop, click **Start**, point to **Settings**, and click **Control Panel**.
2. Double-click **Add/Remove Programs**. The Add/Remove Programs Properties dialog box appears.
3. From the **Install/Uninstall** tab, select **OnWeb Web-to-Host Pro Client**, and click **Add/Remove**.
4. From the Web-to-Host Pro Client Uninstall message box, click **OK** (to continue uninstalling the program). The program uninstalls and you return to the Add/Remove Programs Properties dialog box.
5. Click **OK**.

Note: You must delete one file manually. Open `c:\Windows\Downloaded Program Files\`, right click **Pro Client Persistent Session Control** and click **Remove**. Click **Yes** to delete the file permanently.

Uninstalling Java

To remove the Java component, do any of the following:

- [Run a selective uninstall script](#) to choose your uninstall options. From the Web-to-Host DVD or server, run `\w2hlegacy\utils\nmjuninstall\0409\nmjverboseuninstall.html`
- [Run a silent remove all script](#) to remove the Java component without any uninstall options.

From the Web-to-Host DVD or server, run
\\w2hlegacy\utils\nmjuninstall\0409\nmjsilentuninstall.html

- Follow the appropriate procedure below for the client browser.

To uninstall Java from Firefox

1. From the Firefox Edit menu, select **Preferences**.
2. From the left side of the dialog box, select **Advanced/Cache**.
3. On the right side of the box, click the **Clear Disk Cache** button.

To uninstall Java from IE

1. From the Windows directory, open the Downloaded Program Files directory.
2. Select any of the following files as needed for removal:

Java Mainframe Display
Java Mainframe Printer
Java UNIX Display
Java AS400 Display
Java AS400 Printer
Java AS400 File Transfer

3. Right-click the files, then click **Remove**.
4. Click **Yes** to delete the files permanently.

Uninstalling Session Configuration Manager

When you run the Session Configuration Manager (SCM), the utility is installed locally if you are using Internet Explorer (IE), but is run from the cache if you are using Firefox.

To uninstall SCM from Firefox

1. From the Firefox Edit menu, select **Preferences**.
2. From the left side of the dialog box, select **Advanced/Cache**.
3. On the right side of the box, click the **Clear Disk Cache** button.



4. Delete the directory, c:\Program files\Firefox\Users\\w2hlegacy.

To uninstall SCM from IE

1. From the c:\WINDOWS\Downloaded Program Files directory, right-click Java session configuration (WIZARD), then choose **Remove**.
2. If the directory c:\WINDOWS\Java\w2hlegacy exists, delete it.



RUMBA PC-to-Host, a traditional desktop PC-to-host application that runs on Microsoft® Windows 7, Vista, XP and 2003 clients, and OnWeb Web-to-Host Pro component have shared executable files. Consequently, certain conditions must be met for both products to coexist on the same client workstation.

OnWeb Web-to-Host Pro 6 is completely compatible with RUMBA PC-to-Host 8.0. In most cases, there should be no problems when applying feature TMPs to Web-to-Host Pro component and RUMBA PC-to-Host.

Note: The Web-to-Host Java components are compatible with all versions of RUMBA PC-to-Host products.

By default, the OnWeb Web-to-Host Pro installation writes all program files on the client workstation to:

C:\Program Files\Micro Focus\RUMBA

User data files are written to locations that vary depending on the user's environment. For details, see ["User Data File Locations"](#) on page 55.

Coexistence requirements

The client workstation must meet these requirements for the Web-to-Host Pro component to coexist with RUMBA PC-to-Host:

- The RUMBA PC-to-Host product version must be version 8.0. The Pro software is currently not compatible with earlier versions.
- You must install both products in the same language.

- If an incompatible RUMBA PC-to-Host product is installed, you must remove it before installing the OnWeb Web-to-Host Pro controls.

To determine the way Pro deals with different coexistence conditions, edit the following parameters in the w2hservercfg.xml file, located in the config folder on the Web-to-Host server.

- **CoExistProblemBehavior** value="0 |1". A value of 0 means that when an existing copy of PC-to-Host is version 7.5.2 or earlier, a message appears stating that the version is incompatible and that installation of the OnWeb Web-to-Host Pro software has been halted. A value of 1 automatically uninstalls the incompatible version without notifying the user.
- **CoExistProblemMessage** value=<message>. A default message informs the user that an incompatible version has been detected. However, you can customize the message. This is useful if you want to include extra information, for example, help desk contact information or the path to a compatible version of PC-to-Host.

Changes you make to the w2hservercfg.xml file apply to all user sessions connecting to the server. User created files, such as macros and keyboard mappings, are not deleted when the incompatible version is uninstalled.

Setting a custom install path

As stated previously, by default, the OnWeb Web-to-Host Pro installation places all program files on the client workstation in:
C:\Program Files\Micro Focus\RUMBA

By default, RUMBA PC-to-Host also places its program files in the same location. If RUMBA PC-to-Host is installed first, OnWeb Web-to-Host Pro installs its program files to the same location and both products coexist. However, if OnWeb Web-to-Host Pro is installed first, the destination path in the RUMBA PC-to-Host install wizard is dimmed and cannot be changed.

To install OnWeb Web-to-Host Pro first to a customized location, use the MSI Packager Utility located in \utils\MSIPackager. For more information on MSI Packager, see the online help supplied with the utility.

Upgrading Pro and PC-to-Host software

When you install a new OnWeb Web-to-Host release version or Service Pack, the new Pro software automatically downloads to the client workstation when the user opens a Pro session. A start-up program compares the Pro and PC-to-Host desktop software versions. If the versions are not compatible, the user



receives a message determined by the option configured in the w2hservercfg.xml file.



In OnWeb Web-to-Host there are two types of Pro configuration settings.

- Administrator settings - created by Web-to-Host administrators using the Session Configuration Manager (SCM) Wizard and deployed to the users as HTML session files.
- User settings - stored in a local configuration file (.cph). If, in SCM Wizard, the administrator has enabled editing specific options, users create their own customized local configurations settings for options, such as interface color, toolbars, menus, keyboard map or logon script.

In previous versions of OnWeb Web-to-Host when the administrator made changes to Pro HTML session files, all user changes were reset (deleted).

OnWeb Web-to-Host 6 provides a new mechanism that preserves user changes. SCM Wizard changes do not automatically delete the user's .cph file. Settings which only the user can set are not deleted when you, the administrator, change the HTML session files. This means users do not lose their customized environment with its colors, toolbars, and keyboard mappings.

This appendix lists the conditions that determine which configuration file takes precedence, if both an HTML session files and a user .cph file exist. It also explains how the configuration file is handled when included within a distribution package.

Rules defining Pro behavior

The following sections list the rules for determining the settings implemented - default settings in HTML session files or user customized .cph settings.

No user configuration (.cph) file exists

The first time the user opens a session no user .cph file exists. Consequently, the user receives the options defined in the SCM Wizard.

Existing user configuration (.cph) file

When a user .cph file exists, the following rules apply.

1. If a .cph file exists, but no particular option is enabled, the user receives the default options set in the SCM Wizard. This is because you have not given the user permission to modify options. For example, if a user .cph file exists but you did not select **Enable Edit Options**, the user cannot create a customized configuration with features, such as word wrap or type ahead. The user is required to use the values set in the HTML session file.
2. If a .cph file exists and a particular option is enabled, the user can customize the configuration. For example, if **Enable Edit Options** is selected, the user can create a personalized environment that allows features, such as word wrap, type ahead, and keyboard auto reset. In this case, if you make changes to the HTML session file including those features which the user has customized, the user .cph file is not deleted and the customized environment remains in effect. To enforce the use of the default HTML settings, you should disable the relevant option, for example, **Enable Edit Options**. Then the HTML settings override user settings for those options only. All other user configurations remain in effect.

User configuration files in a distribution package

As an administrator you can create a user .cph file from the session's HTML configuration and include it in a distribution package. This means the user starts with a customized, pre-configured session. It also means that you can provide the user with more configurable client options than you can assign through the SCM Wizard. You can enable a particular client option, modify its settings using the option dialog, insert the session configuration file into a distribution package and then optionally disable the option (depending on whether or not you want to allow further user editing).

For example, selecting **Enable Edit Options** in the SCM Wizard allows you to open the Edit Options dialog box within a session and choose Clipboard and Parsing options that are not part of the SCM Wizard. The additional settings are added to the user .cph file. Then you can associate the session .cph file to a

distribution package. If you want to maintain standardization, you can disable Edit options.

In all cases, if you modify the distribution package, the new user configuration replaces the user's previous file, deleting all user settings.



This appendix describes procedures for installing and running OnWeb Web-to-Host from the OnWeb product.

OnWeb server installation

This section contains procedures for installing and removing OnWeb Web-to-Host on the OnWeb server machine. For installation and removal procedures for OnWeb Web-to-Host as a standalone product, see [“Server Installation” on page 9](#).

To install OnWeb Web-to-Host

1. Insert the product DVD into the drive on the OnWeb server machine.
The setup program should start automatically. Click on the **On Web Web to Host 6.0** link in the main menu, and then choose **Install On Web Web to Host 6.0**.
2. Click the link to **Install OnWeb Web-to-Host**.
3. Read the introductory information, then click **Next**.
4. Read the **Software License Agreement**, select the option to accept the terms of the license agreement, and then click **Next**.
5. Enter the license key for your OnWeb Web-to-Host product, then click **Validate**.
6. The setup program detects the location of your OnWeb installation and displays a message notifying you that OnWeb Web-to-Host will be installed in this folder. Click **OK**.

The setup program creates a new **w2hlegacy** directory under the root publishing directory and begins copying files to that directory.

When finished, the **Installation Complete** screen appears. (See [“Directory structure” on page 15](#) for an overview of what the correct installation should look like.)

7. Click **Finish** to exit the installation.
8. Restart the OnWeb Server.

To remove OnWeb Web-to-Host

When removing OnWeb Web-to-Host from the OnWeb server, you should also uninstall the product from all client machines. For details on this procedure, see [“Client uninstall” on page 39](#).

1. In the Windows Control Panel, double-click the **Add/Remove Programs** icon.
2. Select **OnWeb Web-to-Host Server**, then click **Add/Remove**.
3. Follow the prompts to remove OnWeb Web-to-Host Server.

Working with Web-to-Host profiles

After installing OnWeb Web-to-Host on the OnWeb server, the next task is to create and configure client profiles. This section explains how to use the Session Configuration Manager (SCM) utility to create, edit, and deploy client profiles to your users.

To run the SCM utility

To start the Session Configuration Manager utility, direct the browser to:
http://<OnWeb Server Name>:<port>/w2hlegacy/config/hostwizard.html

For details on using the SCM utility, see [“Creating and Migrating Client Profiles” on page 19](#).

Using the SCM utility in OnWeb

The SCM utility behaves the same as when running OnWeb Web-to-Host as a standalone product. This behavior is described in Chapter 3: [“Creating and Migrating Client Profiles” on page 19](#).



To migrate Web-to-Host profiles

You must migrate existing OnWeb Web-to-Host profiles when you first install OnWeb Web-to-Host software, and whenever you install a new release version or apply a TMP or Service Pack.

For details on the migration procedure, see [“To migrate profiles after upgrading” on page 20](#).



OnWeb Web-to-Host stores user data on the client in a location specified by the user's environment. This location is determined by several environmental variables, such as the client operating system and browser, and whether roaming user profiles are enabled.

Roaming profile support for Pro and Java sessions

While normal Windows profiles store user environment settings on the client workstation, roaming user profiles store this information on their server. When a user logs on to the server, the roaming profile is downloaded to the client workstation. When the user logs off the server, the roaming profile (along with any changes) is uploaded back to the server. This scenario enables the user to work on different client workstations while using the same environment settings.

OnWeb Web-to-Host supports roaming user profiles for Pro and Java client sessions. Users with roaming profiles can access their custom settings (such as keyboard maps and macros) when running Pro and Java sessions on various workstations.

Default paths for user data files

This section lists the user data file locations for a client workstation with a default Windows installation.

Pro sessions using Internet Explorer

If RUMBA PC-to-Host has been previously installed on the client workstation, Web-to-Host stores user data files in the same location. If not, these locations are read from the Windows registry.

- **Windows 2003 and Windows XP**
c:\Documents and Settings*username*\Application Data\Micro Focus\RUMBA
- **Windows Vista and Windows 7**
c:\Users*username*\AppData\Local\Micro Focus\RUMBA

You can use the MSI Packager utility to modify default user data file locations. For more information on MSI Packager see the online help supplied with the product.

Java sessions using Internet Explorer

These locations are the same as for the Pro sessions using Internet Explorer or Netscape.

Java sessions using Firefox

Windows 2003 and Windows XP use the USERPROFILE environment variable.

- **Windows 2003 and Windows XP**
c:\Documents and Settings*username*\Application Data\Micro Focus\RUMBA
- **Windows Vista and Windows 2007**
c:\Users*username*\AppData\Local\Micro Focus\RUMBA

End users can run DOS HLLAPI applications with their Pro Display sessions. However, they should not run multiple DOS HLLAPI programs concurrently, because there is no security on overlapping service requests.

About DOS HLLAPI

Unlike Windows applications, which call functions from dynamic-link libraries or send messages to each other, DOS applications set up a request buffer, set register values to point to that request buffer, and call an interrupt. OnWeb Web-to-Host software includes a set of modules that read the interrupt and service the request.

DOS HLLAPI function parameters are passed in a data structure in memory known as a Parameter Control Block (PCB). The PCB also specifies the return buffer area. Upon receiving the DOS interrupt, a proxy program reads the PCB and makes the HLLAPI call to OnWeb Web-to-Host software for servicing.

To run a DOS HLLAPI application

1. In the Session Configuration Manager, configure the client session for DOS HLLAPI. This must be a Pro Display session. On the **HLLAPI configuration** tab, verify that all data is correct.
2. On the client machine, follow the appropriate procedure for your operating system:

Windows XP

- a) Run **c:\Program Files\walldata\shared\system\wdhllpxy.exe**. (From the Windows **Start**

menu, click **Run**, then click **Browse** to navigate to the file.) This program monitors your application's DOS HLLAPI requests and submits them to the Web-to-Host session. When the proxy program is active, its icon



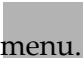
displays on the Windows taskbar.

- b) Open a DOS window, then make the **c:\Program Files\Walldata\Shared\system** folder the current folder, and then type **wdhlltsr** at the DOS prompt.

By default, the interrupt is set to **7F**. To use a different interrupt, type **wdhlltsr /iXX** at the DOS prompt, where **XX** is the interrupt you wish to use.

- c) Run your DOS HLLAPI application in the current DOS window.

Note: You can create a batch file that runs both the TSR and your DOS HLLAPI application.

- d) When your DOS HLLAPI application has completed:
 - Verify that the DOS HLLAPI application called the **DisconnectPS** function to release the connection to the client presentation space. Otherwise, you cannot use the same HLLAPI shortname to connect client sessions. For details, consult your HLLAPI documentation.
 - At the DOS prompt, type **exit** to close the DOS window and remove the DOS HLLAPI TSR program.
 - Close the proxy program by clicking its icon  on the taskbar and choosing **Close** from the menu.

Troubleshooting

This section discusses Windows registry entries required for DOS HLLAPI support and DOS HLLAPI error messages.



To verify registry entries for DOS HLLAPI

When troubleshooting DOS HLLAPI errors, you may need to verify the appropriate entries in your Windows registry.

1. Run the **Regedt32** utility in your Windows directory.
2. Verify that the key
[HKEY_LOCAL_MACHINE\SYSTEM\CurrentControlSet\Services\WDHLLKNL] exists and contains these values:

ErrorControl=REG_DWORD:0X01
Start=REG_DWORD:0X02
Type=REG_DWORD:0X01
3. Verify that the key
[HKEY_LOCAL_MACHINE\SYSTEM\CurrentControlSet\Control\VirtualDeviceDrivers] exists and contains a **REG_MULTI_SZ** value named **VDD**.
4. Verify that the VDD value includes this path:
c:\Program Files\Walddata\Shared\system\WDHLLVDD.DLL

DOS HLLAPI error messages

Error message	Explanation	Action
E-PXY-001: hllapi()	The proxy program could not locate the hllapi() function in the library. This file may be missing, incompatible, or corrupted.	Verify that the ehllapi32.dll exists in your c:\Program Files\Walldata\Shared\system folder. If you need help replacing this file, contact your system administrator.
E-PXY-002: EHLAPI32.DLL	The proxy program was unable to load the ehllapi32.dll . This file may be missing, incompatible, or corrupted.	Verify that the ehllapi32.dll exists in your c:\Program Files\Walldata\Shared\system folder. If you need help replacing this file, contact your system administrator. If you need help replacing this file, contact your system administrator.
E-PXY-003: !WDHLLKNL.SYS (99)	The proxy program was unable to load the kernel driver WDHLLKNL.SYS . The number in parentheses (99 is a placeholder) is a system error code. This file may be missing or the registry entry may be invalid.	Verify that: The wdhllkn.sys file exists in the \Winnt\system32\drivers folder. The Windows registry entries for DOS HLLAPI are correct. For details, see “To verify registry entries for DOS HLLAPI” on page 59 .
E-TSR-001: /i?? [/i7F]	There was a syntax error in the specification of the DOS interrupt to use.	To specify an interrupt other than 7F (default), type wdhlltsr /iXX at the DOS prompt, where XX is the interrupt you wish to use.
E-VDD-001: !WDHLLKNL.SYS	Web-to-Host software was unable to locate or load the kernel driver.	Verify that: • The wdhllkn.sys file exists in the \Winnt\system32\drivers folder. • The Windows registry entries for DOS HLLAPI are correct. For details, see “To verify registry entries for DOS HLLAPI” on page 59
E-VDD-002: Memory allocation error	Web-to-Host software was unable to allocate memory for buffering the call or return blocks for data transfer.	Check your memory resources. You can free memory by closing or minimizing other applications and running DOS applications in a full-screen display instead of in a window.



The Trace Utility is a diagnostic tool for troubleshooting host communications and connectivity problems. With this utility you can trace activity within host software or other standardized components linked to OnWeb® Web-to-Host. This appendix describes how to use the Trace Utility to get a binary trace that can be sent to Micro Focus Tech Support for additional help troubleshooting your problems.

The Trace Utility is supplied with the Java emulators, however, it must be installed separately for Pro.

Setting trace in Java Sessions

Java tracing is enabled through a set of parameters configured in the Session Configuration Manager (SCM). In all Java Display and Printer sessions, tracing is controlled from the **Custom Options** tab. Tracing in these emulations is at two levels.

- **Host Interface Tracing** - captures telnet data that flows between the emulator and the host.
- **Session Tracing** - captures the emulator specific data stream data.

The following parameters must be entered with a value of either **True** or **False** in the Value column:

- **EnableHostInterfaceTracing** and **EnableSessionTracing** determine if these levels are captured.
- **HostInterfaceTraceFile** and **SessionTraceFile** specify the path where the trace files are written and the name assigned to them. If they are left blank, trace data is written to the Java console (when enabled).
- **EnableTraceControlButtons**, when set to true, adds Record, Stop and Pause buttons to the emulator's toolbar.

When tracing is enabled, but **EnableTraceControlButtons** is not set to true, tracing is always on, and begins as soon as the emulator initiates its connection.

Note: Java UNIX Display does not have a **Customs Options** tab. Use the **Trace Options** tab to set all trace parameters.

For Java AS/400 File Transfer tracing is set from the **General Options** tab. Selecting the **Enable Trace** button results in a new trace control button on the emulator's toolbar

Setting trace in Pro Sessions

Pro uses the RUMBA Trace Utility that comes with RUMBA® as standard. If RUMBA is installed, then use its trace utility.

If RUMBA is not installed, you can download the Trace Utility from the server hosting OnWeb® Web-to-Host. Type the following URL into the **Address** box of any web browser.

`http://<servername>/w2hlegacy/utills/installrumbatrace.exe`

To take a correct binary trace:

1. Open **Start/Programs/Micro Focus Rumba/Rumba Tools/Micro Focus Rumba 8.0 Trace**.
2. From the **Options** menu, choose **Configuration**.
3. On the **API Selection** tab, click **Select All**. After all entries have been selected, click **Reset All**.
4. On the **Output** tab. In the **Formatted Output** section, select **Display**. In the **Binary Output** section select **Binary File**. The box next to the option becomes available. Enter the full path (or Browse to it) for the binary file being created. For example, you might assign the file the call log number, c368758.bin. All file names should end with the extension .bin.
5. Click **OK**.
6. Minimize the RUMBA Trace window that appears.
7. Run the Rumba application that is causing the problem as you normally would, starting from the connection (for example, Rumba Display, or Printer). Let the program run until the problem appears (error message, session hanging or any other problem).

8. Logoff and disconnect from the host.
9. Maximize the RUMBA Trace window. From the File menu, choose Exit.
10. Send the binary file you created in step 4, via email to Micro Focus Tech Support.

 **Warning**

VERY IMPORTANT: Before starting the procedure, close all applications. If you are using the Rumba Engine make sure it is closed. Be sure there are no blue and red icons in the tray bar.



A

AS/400

display

- Express client 4
- Java client 3
- Pro client 2

file transfer

- Java client 3, 36

printer

- Java client 3
- Pro client 2

AS/400 File Transfer 3

B

browser

- administrator workstation 10
- client workstation 36

C

CD Image Creator 37

Client Locale 30

client profiles

configuring

- Client Locale 30
- Host Character Set 28
- international language support 27
- keyboard maps 29
- Local Start 25
- Run in a Separate Window 25
- Server URL 25
- UNIX character set options 28

creating 23

migrating 19, 21

publishing 34

client workstations

installing 36

- Java 38
- migrating client profiles 19
- Pro 37

system requirements 35

- browser 36
- operating system 35

uninstalling 39

- Express 40
- Java 39
- Pro 39
- Session Configuration Manager 40

concurrent sessions

- displayed in or out of browser 26
- standalone Pro client 26

configuration settings 24

console mode 12

contacting Micro Focus sales and support 7

Conversion Utility for client profiles 19

D

debugging

- see troubleshooting

documentation 6

E

evaluation product, installing and migrating 14

Express client

- architecture 5
- mainframe display and AS/400 display 4
- overview 1
- uninstalling 40

F

features and options

- Java client 4
- Pro client 2

H

Host Character Set 28

host requirement for Java AS/400 File Transfer 36

HP display, Pro client 2

I

installing

client

- Java 38
- overview 36
- Pro 37

evaluation product 14

host requirements 36

migrating client profiles 19

server

- from console 12
- installed directories 15
- OnWeb server 51
- system requirements 9
- troubleshooting 16
- Windows NT- compatible 10

international language support 27

Client Locale 30

common scenarios 30

Host Character Set 28

keyboard maps 29

UNIX character set options 28

Internet Explorer (IE)

client browser requirement 36

installing

Java client 38

uninstalling

- Java client 40
- Pro client 39
- Session Configuration Manager (SCM) 41

iSeries 11

J

Java client

advanced features 4

architecture 5

AS/400 display, printer, and file transfer 3

installing 38

mainframe display and printer 3

overview 1

uninstalling 39

UNIX display 3

Java Web Start 32

K

Kerberos authentication 6

keyboard maps,configuring international client sessions 29

L

language support, international

common scenarios 30

configuring multilingual options 27

licensing 6

M

mainframe

display

- Express client 4
- Java client 3
- Pro client 2

printer

- Java client 3
- Pro client 2

Micro Focus sales and support 7

migrating profiles 21

using SCM 22

MSI Packager 37

multiple sessions

displayed in or out of browser 26

Run in a Separate Window 25

standalone Pro client 26



N

- NetManage Service Manager 37
- Netscape
 - installing
 - Express client 39
 - Java client 38
 - uninstalling
 - Java client 40
 - Pro client 39
 - Session Configuration Manager (SCM) 40
- non-Windows server
 - uninstalling 17

O

- OnWeb
 - installing and removing OnWeb Web-to-Host 51
 - OnWeb Web-to-Host
 - running under OnWeb 51
 - running the Session Configuration Manager (SCM) utility 52
 - Session Configuration Manager Utility (SCM) 52
- OnWeb Web-to-Host
 - architecture 4
 - components 1
 - creating client profiles 23
 - directory structure on server 15
 - documentation 6
 - installing
 - evaluation product 14
 - OnWeb server 51
 - troubleshooting server install 16
 - Windows NT- compatible servers 10
 - product overview 1
 - security 5
 - uninstalling
 - from client 39
 - from OnWeb server 52
 - from server 17
 - upgrading 19
- operating system, client workstation 35

P

- Pro client
 - advanced features 2
 - architecture 5
 - AS/400 display and printer 2
 - coexistence with RUMBA PC-to-Host 43, 47
 - HP Display 2
 - installing 37
 - mainframe display and printer 2
 - multiple standalone sessions 26
 - overview 1
 - uninstalling 39
 - UNIX display 2
- product
 - architecture 4
 - documentation 6
 - evaluation, installing and migrating from 14
 - licensing 6
 - overview 1
 - sales and support 7
 - security 5
- publishing client profiles 34

R

- readme file 6

S

- sales, contacting 7
- security 5, 25
- server mode, Session Configuration Manager 23, 34
- Session Configuration Manager 23
- Session Configuration Manager (SCM)
 - client options 25
 - Client Locale 27
 - Host Character Set 27
 - keyboard map options 27
 - Local Start 25
 - multiple sessions 26

- Run in a Separate Window 25
- Server URL 25
- creating client profiles 23
- description 1
- is lost 16
- local mode and server mode 23
- migrating client profiles 19
- system requirements 10
- uninstalling from client 40
- SetProInstallPath.exe 37
- setup program does not run 16
- Shortname in use 58
- silent Pro client installation 38
- system requirements
 - client workstations 35
 - Session Configuration Manager 10
 - web server 9

T

- technical support 7
- TMPs and Service Packs 19
- Trace Utility 61
 - Java sessions 61
- troubleshooting
 - SCM does not open 16
 - server installation 16
 - Session Configuration Manager is lost 16
 - setup program does not run 16
 - Web server
 - Windows 2003 server with IIS6 17

U

- uninstalling
 - client 39
 - Express 40
 - Java 39
 - Pro 39
 - Session Configuration Manager 40
 - OnWeb server 52
 - server 17
- UNIX display

- Java client 3
- Pro client 2
- upgrading 19
- user configuration file (.cph) 48
- user licensing 6

W

- web server
 - directory structure 15
 - installing 9
 - uninstalling 17
- workstation
 - see client workstations

